

LEA Name : Reading SD
Address : 800 Washington St
Reading , PA 19601

County : Berks
AUN Number : 114067002
LEA Type : SD

REVISED SUBMISSION

Annual Financial Report Accuracy Certification Statement

For Fiscal Year Ending
6/30/2018

Pennsylvania Department of Education
&
Office of Comptroller Operations

PDE-2056: Intermediate Unit

PDE-2057: School District, AVTS/CTC, Charter School,
and Special Program Jointure

CERTIFICATION: By signing this page I agree that the electronic data submitted is a complete and accurate statement of the financial operations and status of the local education agency for the fiscal year. It has been prepared in accordance with generally accepted accounting principles and established Commonwealth of PA reporting guidelines.

2020. mm
Chief School Administrator Signature

1-14-20
Date

Lisa Lepsi
Board Secretary Signature

1-14-2020
Date

Christian A Lellig

(484)258-7054

Ext :01303

Contact Person

Contact Person Telephone Number

lelligc@readingsd.org

(610)371-5833

Contact Person E-mail Address

Contact Person Fax Number

Audit Certification
Annual Financial Report:
For Fiscal Year Ending **6/30/2018**
(Pursuant to PA School Code Section 218(b))

LEA Name : Reading SD
AUN Number : 114067002
County : Berks

REVISED SUBMISSION

Audit Certification Due:
12/31/2018

This certification is applicable to the Annual Financial Report data submitted
through the Consolidated Financial Reporting System on: 1/6/2020
Date

Auditing Firm:

Maillie

CERTIFICATION: By signing this page I agree that the financial statements of the school have been properly audited as noted above pursuant to Article XXIV, and in the auditor's professional opinion, the Annual Financial Report (PDE-2057) submitted on the date referenced is materially consistent with the audited financial statements.

Chief School Administrator


Signature

1-14-20
Date

Board Secretary


Signature

1-14-2020
Date

Christian A Lellig

Contact Person

lelligc@readingsd.org

Contact Person E-mail Address

(484)258-7054

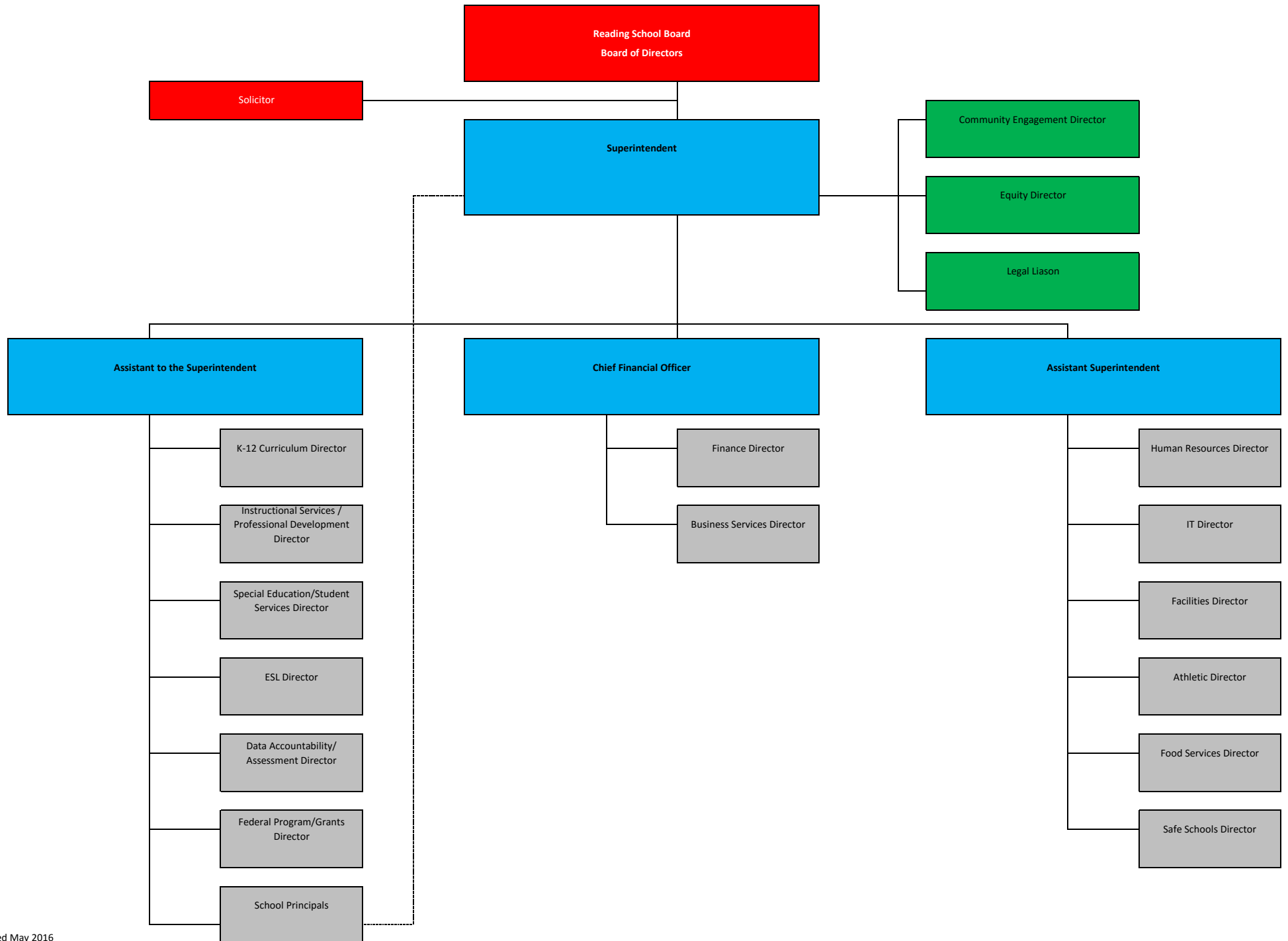
Ext :01303

Contact Person Telephone Number

(610)371-5833

Contact Person Fax Number

**READING SCHOOL DISTRICT
LEADERSHIP TEAM ORGANIZATIONAL CHART**



Val Number	Description	Justification
11075	Data has been reported on the NAG within Fund #28 – Other Comptroller Approved Special Revenue Fund. Please identify the title and function of this fund.	Fund #28 is the Reading School District's Special Revenue - Student Activity Fund for all Elementary Schools.
11085	Data has been reported on the REG within Fund #28 – Other Comptroller Approved Special Revenue Fund. Please identify the title and function of this fund.	Fund #28 is the Reading School District's Special Revenue - Student Activity Fund for all Elementary Schools.
42420	Expenditure Detail: Total current year 2700-513 expenditure varies from prior year by 10%. Correct the data or enter a justification. 2700-513, AFR Exp Detail: \$24,336.90 2700-513, PY AFR Amount: \$2,959.90	Total current transportation increased from the current year as compared to the prior due to additional expenditures for Title 1 District Wide Summer and Millmont Elementary School transportation.
50160	SOIN: All Governmental Fund General Obligation Bonds must include an amount for Interest Paid during Fiscal Year. Correct data or enter a justification.	Capital Appreciation Bonds are issued as "discount bonds" from their principal face amount, they do not pay periodic interest and they mature at their principal face value.
50180	SOIN: All Governmental Fund General Obligation Bonds must include an amount for Amount Due Within One Year (Principal and Interest). Correct data or enter a justification.	Capital Appreciation Bonds are issued as "discount bonds" from their principal face amount, they do not pay periodic interest and they mature at their principal face value.
50410	SESS - 2140 Psychological Services: SESS Schedule amounts for Special Education vary from prior year by 40% or more. Correct the data or enter a justification. SESS Schedule 2140: \$873,511.29 Prior Year SESS Schedule 2140: \$101,778.86	The Reading School District significantly hired additional staffing for Special Education Elementary students.
50440	SESS - 2260 Instruction and Curriculum Development Services: SESS Schedule amounts for Special Education vary from prior year by 40% or more. Correct the data or enter a justification. SESS Schedule 2260: \$33,819.60 Prior Year SESS Schedule 2260: \$251,063.97	2260 Instruction and Curriculum Development Services were reduced due to eliminating the administrative regular salary expenditures. These payroll charges were eliminated and the services were contracted out to Chester County IU.

LEA : 114067002 Reading SD

Printed 1/29/2020 11:56:05 AM

REVISED SUBMISSION

Amounts Expressed in Whole Dollars		<u>General Fund</u> <u>(10)</u>	<u>Public Purpose Trust</u> <u>(27)</u>	<u>Other Compt Approved</u> <u>(28)</u>	<u>Athletic / Activity</u> <u>(29)</u>	<u>Capital Reserve (690.</u> <u>1850)</u> <u>(31)</u>
Assets And Deferred Outflows Of Resources						
Assets						
0100	Cash and Cash Equivalents	84,955,279		124,367		
0110	Investments					
0120	Taxes Receivable	7,329,882				
0130	Due From Other Funds	4,837,151				
0141	Due From Other Governments	2,740,508				
0142	State Revenue Receivable	12,301,369				
0143	Federal Revenue Receivable	6,551,058				
0145	Other Intergovernmental Revenue Receivable					
0146	Due from Primary Government					
0147	Due from Component Unit					
0150	Other Receivables	581,581				
0170	Inventories					
0180	Prepaid Expenses (Expenditures)	56,250				
0190	Other Current Assets					
Total Assets		\$119,353,078		\$124,367		
0910	Deferred Outflows of Resources					
Total Assets And Deferred Outflows Of Resources		\$119,353,078		\$124,367		

LEA : 114067002 Reading SD

Printed 1/29/2020 11:56:05 AM

REVISED SUBMISSION

Amounts Expressed in Whole Dollars

	<u>Capital Reserve (1431)</u> <u>(32)</u>	<u>Other Capital Projects</u> <u>Fund</u> <u>(39)</u>	<u>Debt Service</u> <u>(40)</u>	<u>Permanent</u> <u>(90)</u>	<u>Total Governmental</u> <u>Funds</u>
Assets And Deferred Outflows Of Resources					
Assets					
0100 Cash and Cash Equivalents		3,556,954			88,636,600
0110 Investments					
0120 Taxes Receivable					7,329,882
0130 Due From Other Funds					4,837,151
0141 Due From Other Governments					2,740,508
0142 State Revenue Receivable					12,301,369
0143 Federal Revenue Receivable					6,551,058
0145 Other Intergovernmental Revenue Receivable					
0146 Due from Primary Government					
0147 Due from Component Unit					
0150 Other Receivables					581,581
0170 Inventories					
0180 Prepaid Expenses (Expenditures)					56,250
0190 Other Current Assets					
Total Assets		\$3,556,954			\$123,034,399
0910 Deferred Outflows of Resources					
Total Assets And Deferred Outflows Of Resources		\$3,556,954			\$123,034,399

Amounts Expressed in Whole Dollars		<u>General Fund</u> <u>(10)</u>	<u>Public Purpose Trust</u> <u>(27)</u>	<u>Other Compt Approved</u> <u>(28)</u>	<u>Athletic / Activity</u> <u>(29)</u>	<u>Capital Reserve (690.</u> <u>1850)</u> <u>(31)</u>
Liabilities And Deferred Inflows Of Resources And Fund Balances						
Liabilities						
0400	Due to Other Funds	972,351		1,800		
0411	Due to Other Governments					
0412	Due to Primary Government					
0413	Due to Component Unit					
0420	Accounts Payable	13,441,874		20,347		
0430	Contracts Payable					
0440	Current Portion of Long-Term Debt					
0450	Short-Term Payables					
0461	Accrued Salaries and Benefits	27,201,573				
0462	Payroll Deductions and Withholding	1,894,879				
0480	Unearned Revenues	276,996				
0490	Other Current Liabilities					
Total Liabilities		\$43,787,673		\$22,147		
0950	Deferred Inflows of Resources	5,954,316				
Fund Balances						
0810	Nonspendable Fund Balance	56,250				
0820	Restricted Fund Balance			102,220		
0830	Committed Fund Balance					
0840	Assigned Fund Balance	48,300,000				
0850	Unassigned Fund Balance	21,254,839				
Total Fund Balances		\$69,611,089		\$102,220		
Total Liabilities, Deferred Inflows Of Resources And Fund Balances		\$119,353,078		\$124,367		

LEA : 114067002 Reading SD

Printed 1/29/2020 11:56:05 AM

REVISED SUBMISSION

Amounts Expressed in Whole Dollars		<u>Capital Reserve (1431)</u> <u>(32)</u>	<u>Other Capital Projects</u> <u>Fund</u> <u>(39)</u>	<u>Debt Service</u> <u>(40)</u>	<u>Permanent</u> <u>(90)</u>	<u>Total Governmental</u> <u>Funds</u>
Liabilities And Deferred Inflows Of Resources And Fund Balances						
Liabilities						
0400	Due to Other Funds					974,151
0411	Due to Other Governments					
0412	Due to Primary Government					
0413	Due to Component Unit					
0420	Accounts Payable					13,462,221
0430	Contracts Payable					
0440	Current Portion of Long-Term Debt					
0450	Short-Term Payables					
0461	Accrued Salaries and Benefits					27,201,573
0462	Payroll Deductions and Withholding					1,894,879
0480	Unearned Revenues					276,996
0490	Other Current Liabilities					
Total Liabilities						\$43,809,820
0950	Deferred Inflows of Resources					5,954,316
Fund Balances						
0810	Nonspendable Fund Balance					56,250
0820	Restricted Fund Balance		3,556,954			3,659,174
0830	Committed Fund Balance					
0840	Assigned Fund Balance					48,300,000
0850	Unassigned Fund Balance					21,254,839
Total Fund Balances			\$3,556,954			\$73,270,263
Total Liabilities, Deferred Inflows Of Resources And Fund Balances			\$3,556,954			\$123,034,399

Amounts Expressed in Whole Dollars		<u>General Fund</u> <u>(10)</u>	<u>Public Purpose Trust</u> <u>(27)</u>	<u>Other Compt Approved</u> <u>(28)</u>	<u>Athletic / Activity</u> <u>(29)</u>	<u>Capital Reserve (690.</u> <u>1850)</u> <u>(31)</u>
Revenues						
6000	Revenue from Local Sources	45,946,374		155,236		
7000	Revenue from State Sources	193,676,730				
8000	Revenue from Federal Sources	25,182,101				
Total Revenues		\$264,805,205		\$155,236		
Expenditures						
1000	Instruction	156,886,918				
2000	Support Services	70,510,331				
3000	Operation of Non-Instructional Services	3,007,008		173,351		
4000	Facilities Acquisition, Construction and Improvement Services	4,361,634				
5110	Debt Service	21,880,747				
5130	Refund of Prior Year Revenues / Receipts	34,302				
Total Expenditures		\$256,680,940		\$173,351		
Excess (Deficiency) Of Revenues Over Expenditures		\$8,124,265		(\$18,115)		
Other Financing Sources (Uses)						
9110	Face Value of Bonds Issued					
9120	Proceeds from Refunding of Bonds					
9130	Bond Premiums					
9200	Proceeds from Extended-Term Financing					
9300	Interfund Transfers - IN	646,368				
9400	Sale of or Compensation for Loss of Fixed Assets					
9710	Transfers from Component Units					
9720	Transfers from Primary Governments					
9910	Other Financing Sources Not Listed in the 9000 Series					
9990	Insurance Recoveries	1,262				
5120	Debt Service – Refunded Bonds					
5150	Bond Discounts					
5200	Interfund Transfers – Out	462,860				
5300	Transfers Out to Component Units/Primary Governments					
Total Other Financing Sources (Uses)		\$184,770				

LEA : 114067002 Reading SD

Printed 1/29/2020 11:56:10 AM

REVISED SUBMISSION

Amounts Expressed in Whole Dollars		<u>Capital Reserve (1431)</u> <u>(32)</u>	<u>Other Capital Projects</u> <u>Fund</u> <u>(39)</u>	<u>Debt Service</u> <u>(40)</u>	<u>Permanent</u> <u>(90)</u>	<u>Total Governmental</u> <u>Funds</u>
Revenues						
6000	Revenue from Local Sources		58,624			46,160,234
7000	Revenue from State Sources					193,676,730
8000	Revenue from Federal Sources					25,182,101
Total Revenues			\$58,624			\$265,019,065
Expenditures						
1000	Instruction					156,886,918
2000	Support Services			1,221,261		71,731,592
3000	Operation of Non-Instructional Services					3,180,359
4000	Facilities Acquisition, Construction and Improvement Services		2,769,785			7,131,419
5110	Debt Service			28,217		21,908,964
5130	Refund of Prior Year Revenues / Receipts					34,302
Total Expenditures			\$2,769,785	\$1,249,478		\$260,873,554
Excess (Deficiency) Of Revenues Over Expenditures			(\$2,711,161)	(\$1,249,478)		\$4,145,511
Other Financing Sources (Uses)						
9110	Face Value of Bonds Issued					
9120	Proceeds from Refunding of Bonds			91,090,000		91,090,000
9130	Bond Premiums			10,456,541		10,456,541
9200	Proceeds from Extended-Term Financing					
9300	Interfund Transfers - IN		462,860			1,109,228
9400	Sale of or Compensation for Loss of Fixed Assets					
9710	Transfers from Component Units					
9720	Transfers from Primary Governments					
9910	Other Financing Sources Not Listed in the 9000 Series					
9990	Insurance Recoveries					1,262
5120	Debt Service – Refunded Bonds			100,297,063		100,297,063
5150	Bond Discounts					
5200	Interfund Transfers – Out					462,860
5300	Transfers Out to Component Units/Primary Governments					
Total Other Financing Sources (Uses)			\$462,860	\$1,249,478		\$1,897,108

Amounts Expressed in Whole Dollars		<u>General Fund</u> <u>(10)</u>	<u>Public Purpose Trust</u> <u>(27)</u>	<u>Other Compt Approved</u> <u>(28)</u>	<u>Athletic / Activity</u> <u>(29)</u>	<u>Capital Reserve</u> <u>(690.</u> <u>1850)</u> <u>(31)</u>
Special And Extraordinary Items						
9920	Special Items – Gains					
9930	Extraordinary Items – Gains					
5520	Special Items – Losses					
5530	Extraordinary Items – Losses					
Net Change In Fund Balances		\$8,309,035		(\$18,115)		
Fund Balance						
0001	Fund Balance - Beginning of Fiscal Year	61,302,054		120,335		
Fund Balance - End Of Year		\$69,611,089		\$102,220		

Amounts Expressed in Whole Dollars		<u>Capital Reserve (1431)</u> <u>(32)</u>	<u>Other Capital Projects</u> <u>Fund</u> <u>(39)</u>	<u>Debt Service</u> <u>(40)</u>	<u>Permanent</u> <u>(90)</u>	<u>Total Governmental</u> <u>Funds</u>
Special And Extraordinary Items						
9920	Special Items – Gains					
9930	Extraordinary Items – Gains					
5520	Special Items – Losses					
5530	Extraordinary Items – Losses					
Net Change In Fund Balances			(\$2,248,301)			\$6,042,619
Fund Balance						
0001	Fund Balance - Beginning of Fiscal Year		5,805,255			67,227,644
Fund Balance - End Of Year			\$3,556,954			\$73,270,263

LEA : 114067002 Reading SD

Printed 1/29/2020 11:56:12 AM

REVIS
ED SUBMISSION

Amounts Expressed in Whole Dollars	Food Service (51)	Child Care Operations (52)	Other Enterprise (58)	TOTAL	Internal Service (60)
Assets And Deferred Outflows Of Resources					
Current Assets					
0100 Cash and Cash Equivalents	4,883,986			4,883,986	
0110 Investments					
0130 Due From Other Funds					
0141 Due From Other Governments					
0142 State Revenue Receivable	72,298			72,298	
0143 Federal Revenue Receivable	1,683,851			1,683,851	
0146 Due from Primary Government					
0147 Due from Component Unit					
0150 Other Receivables	30,210			30,210	
0170 Inventories	217,726			217,726	
0180 Prepaid Expenses (Expenditures)					
0190 Other Current Assets					
Total Current Assets	\$6,888,071			\$6,888,071	
Noncurrent Assets					
0211 Land					
0212 Site Improvements (Net)					
0220 Buildings and Building Improvements (Net)					
0230 Machinery, Equipment and Furniture (Net)	1,332,983			1,332,983	
0250 Construction in Progress					
0260 Long Term Prepayments					
0290 Other Noncurrent Assets					
Total Noncurrent Assets	\$1,332,983			\$1,332,983	
0910 Deferred Outflows of Resources	2,043,000			2,043,000	
Total Assets And Deferred Outflows Of Resources	\$10,264,054			\$10,264,054	

Amounts Expressed in Whole Dollars	<u>Food Service</u> <u>(51)</u>	<u>Child Care</u> <u>Operations</u> <u>(52)</u>	<u>Other Enterprise</u> <u>(58)</u>	<u>TOTAL</u>	<u>Internal Service</u> <u>(60)</u>
Liabilities And Deferred Inflows Of Resources And Net Position					
Current Liabilities					
0400 Due to Other Funds	4,837,131			4,837,131	
0411 Due to Other Governments					
0413 Due to Component Unit					
0420 Accounts Payable	244,677			244,677	
0430 Contracts Payable					
0440 Current Portion of Long-Term Debt					
0450 Short-Term Payables					
0461 Accrued Salaries and Benefits					
0462 Payroll Deductions and Withholding					
0480 Unearned Revenues					
0490 Other Current Liabilities					
Total Current Liabilities	\$5,081,808			\$5,081,808	
Noncurrent Liabilities					
0510 Bonds Payable					
0520 Extended-Term Financing Agreements Payable					
0530 Lease-Purchase Obligations					
0540 Accumulated Compensated Absences	64,095			64,095	
0550 Authority Lease Obligations					
0560 Other Post-Employment Benefits (OPEB)	5,596,056			5,596,056	
0570 Net Pension Liability					
0599 Other Noncurrent Liabilities	10,824,000			10,824,000	
Total Noncurrent Liabilities	\$16,484,151			\$16,484,151	
Total Liabilities	\$21,565,959			\$21,565,959	
0950 Deferred Inflows of Resources	1,509,696			1,509,696	
Net Position					
0791 Net Investment in Capital Assets	1,332,983			1,332,983	
0008 Restricted Net Position (0792 – 0798)					
0799 Unrestricted Net Position	(14,144,584)			(14,144,584)	
Total Net Position	(\$12,811,601)			(\$12,811,601)	
Total Liabilities And Deferred Inflows Of Resources And Net Position	\$10,264,054			\$10,264,054	

Amounts Expressed in Whole Dollars	Food Service (51)	Child Care Operations (52)	Other Enterprise (58)	TOTAL	Internal Service (60)
Operating Revenues					
6600 Food Service Revenue	107,167			107,167	
0071 Charges for Services					
0072 Other Operating Revenue					
Total Operating Revenues	\$107,167			\$107,167	
Operating Expenses					
100 Personnel Services – Salaries	3,834,850			3,834,850	
200 Personnel Services – Employee Benefits	2,895,226			2,895,226	
300 Purchased Professional and Technical Services					
400 Purchased Property Services	69,193			69,193	
500 Other Purchased Services	115,969			115,969	
600 Supplies	7,183,237			7,183,237	
740 Depreciation	140,880			140,880	
810 Dues and Fees	732			732	
890 Miscellaneous Expenditures					
Total Operating Expenses	\$14,240,087			\$14,240,087	
Operating Income (Loss)	(\$14,132,920)			(\$14,132,920)	
Non Operating Revenues (Expenses)					
6500 Earnings on Investments	7,188			7,188	
6920 Contributions and Donations from Private Sources					
6930 Gains or Losses on Sale of Fixed Assets					
6991 Refunds of a Prior Year Expenditure					
7000 Revenue from State Sources	1,391,971			1,391,971	
8000 Revenue from Federal Sources	12,024,873			12,024,873	
820 Claims and Judgments Against the LEA					
830 Interest					
TOTAL Non Operating Revenues (Expenses)	\$13,424,032			\$13,424,032	
Income (Loss) Before Contributions And Transfers	(\$708,888)			(\$708,888)	

Amounts Expressed in Whole Dollars	<u>Food Service</u> <u>(51)</u>	<u>Child Care Operations</u> <u>(52)</u>	<u>Other Enterprise</u> <u>(58)</u>	<u>TOTAL</u>	<u>Internal Service</u> <u>(60)</u>
Contributions, Transfers, and Special and Extraordinary Items					
5200 Interfund Transfers – Out	646,368			646,368	
5300 Transfers Out to Component Units/Primary Governments					
5520 Special Items – Losses					
5530 Extraordinary Items – Losses					
9300 Interfund Transfers - IN					
9500 Capital Contributions					
9700 Transfers IN From Component Units/Primary Governments					
9920 Special Items – Gains					
9930 Extraordinary Items – Gains					
Change In Net Position	(\$1,355,256)			(\$1,355,256)	
0002 Net Position - Beginning of Fiscal Year	(9,081,237)			(9,081,237)	
0003 Accounting Changes / Residual Equity Transfers	(2,375,108)			(2,375,108)	
Net Position - End Of Year	(\$12,811,601)			(\$12,811,601)	

LEA : 114067002 Reading SD

Printed 1/29/2020 11:56:21 AM

REVIS
ED SUBMISSION

Amounts Expressed in Whole Dollars	Food Service (51)	Child Care Operations (52)	Other Enterprise (58)	TOTAL	Internal Service(60)
Cash Flows From Operating Activities					
0011 Cash Receipts From Users	102,651			102,651	
0012 Cash Receipts From Assessments Made to Other Funds					
0013 Cash Receipts From Earnings on Investments					
0014 Cash Receipts From Other Operating Revenue					
0015 Cash Payments To Employees For Services	6,609,941			6,609,941	
0016 Cash Payments For Insurance Claims					
0017 Cash Payments To Suppliers For Goods and Services	5,137,343			5,137,343	
0018 Cash Payments For Other Operating Expenses					
Net Cash Provided By (Used For) Operating Activities	(\$11,644,633)			(\$11,644,633)	
Cash Flows From Non-Capital Financing Activities					
0021 Receipts From Local Sources - 6000					
0022 Receipts From State Sources - 7000	1,381,103			1,381,103	
0023 Receipts From Federal Sources -8000	11,742,805			11,742,805	
0024 Notes and Loans Received (Repaid)					
0025 Interest Paid on Notes/Loans - 5100-830					
0026 Operating Transfers In (Out)/Residual Equity Trans					
0027 Operating Transfers In (Out) Primary Government / Comp Unit	(646,368)			(646,368)	
0028 Receipts From Refund of Prior Year Expenditures - 6991					
0029 Special and Extraordinary Gains (losses)					
0030 Receipts from Insurance Recoveries -9990					
Net Cash Prov By (Used for) Non-Capital Financing Activities	\$12,477,540			\$12,477,540	
Cash Flows From Capital and Related Financing Activities					
0031 Payments For Fac Acq, Const, and Imp - 4000	(480,725)			(480,725)	
0032 Gain / (Loss) on Sale of Fixed Assets - 6930					
0033 Proceeds From Extended Term Financing - 9200					
0034 Principal Paid on Financing Agreements					
0035 Interest Paid on Financing Agreements - 5100-830					
0036 (Inc) Dec in Contributed Capital					
Net Cash Prov By (Used for) Capital and Related Financing Activities	(\$480,725)			(\$480,725)	
Cash Flows From Investing Activities					
0041 Earnings on Investments - 6500	7,188			7,188	
0042 Purchase of Inv Securities / Deposits to Inv Pools					
0043 Receipts From Investment Pool Withdrawals					
0044 Proceeds from Sale and Maturity of Inv Securities					

LEA : 114067002 Reading SD

Printed 1/29/2020 11:56:21 AM

REVISED SUBMISSION

0045 Loans Received (Paid)

Net Cash Prov By (Used for) Investing Activities	\$7,188	\$7,188
--	---------	---------

LEA : 114067002 Reading SD

Printed 1/29/2020 11:56:21 AM

REVIS
ED SUBMISSION

	Food Service (51)	Child Care Operations (52)	Other Enterprise (58)	TOTAL	Internal Service (60)
Net Increase (Decrease) in Cash Flows	359,370			359,370	
0004 Cash and Cash Equivalents Beginning of Year	4,524,616			4,524,616	
Cash and Cash Equivalents at Year End	\$4,883,986			\$4,883,986	
Reconciliation of Operating Income (Loss) To Net Cash Provided by (Used For) Operating Activities					
0005 Operating Income (Loss) per REP	(14,132,920)			(14,132,920)	
Adjustments					
0051 Depreciation and Net Amortization	140,880			140,880	
0052 Provision for Uncollectible Accounts					
0053 Other Adjustments					
Effect of Changes in Assets, Liabilities, Deferred Outflows and Deferred Inflows					
0054 (Inc) Dec In Accounts Receivable (0120-0150)	(4,516)			(4,516)	
0055 Advances to Other Funds (0160)					
0056 (Inc) Dec in Inventories (0170)	(18,778)			(18,778)	
0057 (Inc) Dec in Prepaid Expenses (0180)					
0058 (Inc) Dec in Other Current or Noncurrent Assets					
0064 Deferred Outflows (0910)					
0059 Inc (Dec) in Accounts Payable (0400-0450)	211,177			211,177	
0060 Inc (Dec) in Accrued Salaries/Benefits (0461)					
0065 Inc (Dec) in Net Pension Liabilities (0570)	100,000			100,000	
0066 Inc (Dec) in Other Postemp Benefit Oblig (0560)	20,135			20,135	
0061 Inc (Dec) in Payroll Deductions/Withholding (0462)					
0062 Inc (Dec) in Unearned Revenue (0480)					
0063 Inc (Dec) in Other Current or Noncurrent Liabilities	2,039,389			2,039,389	
0067 Deferred Inflows (0950)					
Total Adjustments	\$2,488,287			\$2,488,287	
Cash Provided By (Used for) Total	(\$11,644,633)			(\$11,644,633)	

COMBINED STATEMENT OF CASH FLOWS
SCHEDULE OF NONCASH INVESTING, CAPITAL, AND FINANCING ACTIVITIES

Explanation of Transaction and Balance Sheet Effect	Amount
Total	

LEA : 114067002 Reading SD

General Fund (10)

Printed 1/29/2020 11:56:24 AM

REVISED SUBMISSION

Page - 1 of 4

	Revenue Reported In Current Year	Current Year Tax Accrual	Prior Year Tax Accrual	Taxes Collected In Current Year
Revenue from Local Sources				
6111 Current Real Estate Taxes	19,370,268.50			19,370,268.50
6112 Interim Real Estate Taxes	5,836.37			5,836.37
6113 Public Utility Realty Taxes	38,082.65			38,082.65
6114 Payments in Lieu of Current Taxes - State / Local	136,183.84			136,183.84
6120 Current Per Capita Taxes, Section 679	108,587.61			108,587.61
6131 Current Act 1 Earned Income Taxes	10,690,626.36			10,690,626.36
6143 Current Act 511 Local Services Taxes	124,777.44			124,777.44
6145 Current Act 511 Business Privilege Taxes - Flat Rate	1,043,397.69			1,043,397.69
6151 Current Act 511 Earned Income Taxes	5,345,313.12			5,345,313.12
6153 Current Act 511 Real Estate Transfer Taxes	525,975.20			525,975.20
6411 Delinquent Real Estate Taxes	2,530,344.16			2,530,344.16
6420 Delinquent Per Capita Taxes, Section 679	38,253.50			38,253.50
6440 Delinquent Local Enabling Taxes - Flat Rate Assessments	115,229.77			115,229.77
6500 Earnings on Investments	894,232.21			
6700 Revenues from LEA Activities	122,820.34			
6829 State Revenue Received from Other Sources	84,942.55			
6832 Federal IDEA Revenue Received as Pass Through	2,930,665.62			
6910 Rentals	128,336.77			
6920 Contributions and Donations from Private Sources	121,405.17			
6942 Summer School Tuition	30,749.00			
6991 Refunds of a Prior Year Expenditure	1,028,509.45			
6992 Energy Efficiency Revenues and Incentives	208,272.11			
6999 Other Revenues Not Specified Above	323,565.00			
TOTAL Revenue from Local Sources	\$45,946,374.43			\$40,072,876.21

REVISED SUBMISSION

	Revenue Reported In Current Year			
<u>Revenue from State Sources</u>				
7110 Basic Education Funding	134,972,052.71			
7160 Tuition for Orphans Subsidy	122,172.44			
7271 Special Education funds for School-Aged Pupils	11,282,194.06			
7299 Program Revenues Not Listed Previously in the 7200 Series	107,273.71			
7311 Pupil Transportation Subsidy	1,195,785.55			
7312 Nonpublic and Charter School Pupil Transportation Subsidy	338,415.00			
7320 Rental and Sinking Fund Payments / Building Reimbursement Subsidy	6,435,432.84			
7330 Health Services (Medical, Dental, Nurse, Act 25)	369,256.55			
7340 State Property Tax Reduction Allocation	3,675,727.44			
7505 Ready to Learn Block Grant	4,785,693.00			
7810 State Share of Social Security and Medicare Taxes	5,240,643.00			
7820 State Share of Retirement Contributions	25,152,083.30			
TOTAL Revenue from State Sources	\$193,676,729.60			

REVISED SUBMISSION

Revenue Reported In Current Year				
<u>Revenue from Federal Sources</u>				
8310 Payments for Federally Impacted Areas - P.L. 81-815	36,826.26			
8390 Other Restricted Federal Grants-in-Aid Directly from the Federal Government	144,998.70			
8514 NCLB, Title I - Improving the Academic Achievement of the Disadvantaged	17,035,618.11			
8515 NCLB, Title II - Preparing, Training and Recruiting High Quality Teachers and Principals	1,316,067.59			
8516 NCLB, Title III - Language Instruction for Limited English Proficient and Immigrant Students	1,024,835.00			
8517 NCLB, Title IV - 21st Century Schools	462,751.00			
8690 Other Restricted Federal Grants-in-Aid Through the Commonwealth of PA	2,282,109.00			
8810 School-Based Access Medicaid Reimbursement Program (SBAP) Reimbursements (Access)	2,701,289.00			
8820 Medical Assistance Reimbursement for Administrative Claiming (Quarterly) Program	177,606.64			
TOTAL Revenue from Federal Sources	\$25,182,101.30			

REVISED SUBMISSION

Revenue Reported
In Current Year

Other Financing Sources

9350 Enterprise Fund Transfers	646,368.22			
9990 Insurance Recoveries	1,262.37			
TOTAL Other Financing Sources	\$647,630.59			
TOTAL FROM ALL SOURCES	\$265,452,835.92			\$40,072,876.21

Revenue from Local Sources	45,946,374.43
Revenue from State Sources	193,676,729.60
Revenue from Federal Sources	25,182,101.30
Other Financing Sources	647,630.59
TOTAL FROM ALL SOURCES	\$265,452,835.92

LEA : 114067002 Reading SD

Printed 1/29/2020 11:56:31 AM

REVISED SUBMISSION

General Fund (10)	
1000 Instruction	<u>Total</u>
100 <u>Personnel Services – Salaries</u>	
100 Personnel Services – Salaries	66,639,969.88
Total Personnel Services – Salaries	\$66,639,969.88
200 <u>Personnel Services – Employee Benefits</u>	
210 Group Insurance – Contracted Provider	17,082,437.11
220 Social Security Contributions	5,032,215.75
230 PSERS Retirement Contributions	21,751,312.23
250 Unemployment Compensation	57,871.75
260 Workers' Compensation	864,008.05
299 All Other Employee Benefits	(166,787.44)
Total Personnel Services – Employee Benefits	\$44,621,057.45
300 <u>Purchased Professional and Technical Services</u>	
322 Professional Educational Services – Ius	7,316,668.45
324 Professional Educational Services – Employee Training and Development Services	1,256.00
329 Professional Educational Services – Other	2,059,475.52
330 Other Professional Services	2,332,676.96
390 Other Purchased Professional and Technical Services	36,605.48
Total Purchased Professional and Technical Services	\$11,746,682.41
400 <u>Purchased Property Services</u>	
430 Repairs and Maintenance Services	29,340.16
440 Rentals	1,500.00
Total Purchased Property Services	\$30,840.16
500 <u>Other Purchased Services</u>	
510 Student Transportation Services	245,043.44
549 Other Advertising/Public Relations	200.00
550 Printing and Binding	5,379.79
561 Tuition To Other School Districts Within the State	1,848,100.94
562 Tuition To Pennsylvania Charter Schools	10,652,712.53
563 Tuition To Nonpublic Schools	8,062,458.32
564 Tuition To Career and Technology Centers	5,101,858.95
567 Tuition To Approved Private Schools (APS) and PA Chartered Schools for the Deaf and Blind	179,061.80
568 Tuition To Private Residential Rehabilitative Institutions (PRRI) [In-State] and Detention Centers	1,615,363.82
580 Travel	257,314.93
591 Services Purchased Locally	10,006.52
594 IU Payment By Withholding for Institutionalized Children's Programs – Special Classes	718.74
599 Other Miscellaneous Purchased Services	71,573.38
Total Other Purchased Services	\$28,049,793.16
600 <u>Supplies</u>	
610 General Supplies	3,811,157.66
630 Food	37,260.10
640 Books and Periodicals	1,739,954.08
650 Supplies & Fees – Technology Related	135,968.88
Total Supplies	\$5,724,340.72

General Fund (10)		
1000 Instruction		<u>Total</u>
700 <u>Property</u>		
752 Capital Equipment – Original and Additional	69,602.05	
762 Capitalized Equipment - Replacement	612.54	
Total Property	\$70,214.59	
800 <u>Other Objects</u>		
810 Dues and Fees	4,020.00	
Total Other Objects	\$4,020.00	
Total 1000 Instruction	\$156,886,918.37	

LEA : 114067002 Reading SD

Printed 1/29/2020 11:56:31 AM

REVISED SUBMISSION

General Fund (10)

1100 Regular Programs – Elementary / Secondary

	Elementary	Secondary	Federal	Total
100 <u>Personnel Services – Salaries</u>				
100 Personnel Services – Salaries	22,742,218.04	21,661,252.84	7,024,944.85	51,428,415.73
Total Personnel Services – Salaries	\$22,742,218.04	\$21,661,252.84	\$7,024,944.85	\$51,428,415.73
200 <u>Personnel Services – Employee Benefits</u>				
210 Group Insurance – Contracted Provider	5,080,235.54	4,654,568.76	2,227,500.00	11,962,304.30
220 Social Security Contributions	1,738,768.60	1,634,835.50	524,336.69	3,897,940.79
230 PSERS Retirement Contributions	7,489,018.65	7,041,863.48	2,285,017.80	16,815,899.93
250 Unemployment Compensation	591.10	25,485.39	(134.50)	25,941.99
260 Workers' Compensation	309,179.01	293,995.94	77,275.09	680,450.04
299 All Other Employee Benefits	(115,471.55)	(51,315.89)		(166,787.44)
Total Personnel Services – Employee Benefits	\$14,502,321.35	\$13,599,433.18	\$5,113,995.08	\$33,215,749.61
300 <u>Purchased Professional and Technical Services</u>				
322 Professional Educational Services – Ius	1,513.25	44,816.54		46,329.79
324 Professional Educational Services – Employee Training and Development Services	638.00	618.00		1,256.00
329 Professional Educational Services – Other	1,052,768.61	618,160.70	381,405.27	2,052,334.58
330 Other Professional Services			595.00	595.00
390 Other Purchased Professional and Technical Services	3,252.08	79.32		3,331.40
Total Purchased Professional and Technical Services	\$1,058,171.94	\$663,674.56	\$382,000.27	\$2,103,846.77
400 <u>Purchased Property Services</u>				
430 Repairs and Maintenance Services	15,062.23	14,277.93		29,340.16
440 Rentals		1,500.00		1,500.00
Total Purchased Property Services	\$15,062.23	\$15,777.93		\$30,840.16
500 <u>Other Purchased Services</u>				
510 Student Transportation Services	4,728.47	36,998.00	25,108.37	66,834.84
549 Other Advertising/Public Relations		200.00		200.00
550 Printing and Binding	158.24	5,221.55		5,379.79
561 Tuition To Other School Districts Within the State	2,456.04	469,042.75		471,498.79
562 Tuition To Pennsylvania Charter Schools	849,759.58	5,884,612.64		6,734,372.22
563 Tuition To Nonpublic Schools	13,035.00	17,301.00		30,336.00
580 Travel	17,425.35	19,418.92	774.29	37,618.56
591 Services Purchased Locally			10,006.52	10,006.52
599 Other Miscellaneous Purchased Services		71,573.38		71,573.38
Total Other Purchased Services	\$887,562.68	\$6,504,368.24	\$35,889.18	\$7,427,820.10
600 <u>Supplies</u>				
610 General Supplies	345,502.66	375,967.14	2,999,238.67	3,720,708.47
630 Food	1,372.02	1,159.60	613.42	3,145.04
640 Books and Periodicals	59,041.02	128,301.05	1,552,612.01	1,739,954.08
650 Supplies & Fees – Technology Related			135,968.88	135,968.88
Total Supplies	\$405,915.70	\$505,427.79	\$4,688,432.98	\$5,599,776.47
700 <u>Property</u>				
752 Capital Equipment – Original and Additional		11,879.87	47,243.00	59,122.87
762 Capitalized Equipment - Replacement		612.54		612.54
Total Property		\$12,492.41	\$47,243.00	\$59,735.41

LEA : 114067002 Reading SD

Printed 1/29/2020 11:56:31 AM

REVISED SUBMISSION

General Fund (10)

1100 Regular Programs – Elementary / Secondary	<u>Elementary</u>	<u>Secondary</u>	<u>Federal</u>	<u>Total</u>
800 <u>Other Objects</u>				
810 Dues and Fees	1,837.50	2,182.50		4,020.00
Total Other Objects	\$1,837.50	\$2,182.50		\$4,020.00
Total 1100 Regular Programs – Elementary / Secondary	\$39,613,089.44	\$42,964,609.45	\$17,292,505.36	\$99,870,204.25

LEA : 114067002 Reading SD

Printed 1/29/2020 11:56:31 AM

REVISED SUBMISSION

General Fund (10)

1110 Regular Programs

	Elementary	Secondary	Federal	Total
100 <u>Personnel Services – Salaries</u>				
100 Personnel Services – Salaries	22,742,218.04	21,661,252.84		44,403,470.88
Total Personnel Services – Salaries	\$22,742,218.04	\$21,661,252.84		\$44,403,470.88
200 <u>Personnel Services – Employee Benefits</u>				
210 Group Insurance – Contracted Provider	5,080,235.54	4,654,568.76		9,734,804.30
220 Social Security Contributions	1,738,768.60	1,634,835.50		3,373,604.10
230 PSERS Retirement Contributions	7,489,018.65	7,041,863.48		14,530,882.13
250 Unemployment Compensation	591.10	25,485.39		26,076.49
260 Workers' Compensation	309,179.01	293,995.94		603,174.95
299 All Other Employee Benefits	(115,471.55)	(51,315.89)		(166,787.44)
Total Personnel Services – Employee Benefits	\$14,502,321.35	\$13,599,433.18		\$28,101,754.53
300 <u>Purchased Professional and Technical Services</u>				
322 Professional Educational Services – Ius	1,513.25	44,816.54		46,329.79
324 Professional Educational Services – Employee Training and Development Services	638.00	618.00		1,256.00
329 Professional Educational Services – Other	1,052,768.61	618,160.70		1,670,929.31
390 Other Purchased Professional and Technical Services	3,252.08	79.32		3,331.40
Total Purchased Professional and Technical Services	\$1,058,171.94	\$663,674.56		\$1,721,846.50
400 <u>Purchased Property Services</u>				
430 Repairs and Maintenance Services	15,062.23	14,277.93		29,340.16
440 Rentals		1,500.00		1,500.00
Total Purchased Property Services	\$15,062.23	\$15,777.93		\$30,840.16
500 <u>Other Purchased Services</u>				
510 Student Transportation Services	4,728.47	36,998.00		41,726.47
549 Other Advertising/Public Relations		200.00		200.00
550 Printing and Binding	158.24	5,221.55		5,379.79
561 Tuition To Other School Districts Within the State	2,456.04	469,042.75		471,498.79
562 Tuition To Pennsylvania Charter Schools	849,759.58	5,884,612.64		6,734,372.22
563 Tuition To Nonpublic Schools	13,035.00	17,301.00		30,336.00
580 Travel	17,425.35	19,418.92		36,844.27
599 Other Miscellaneous Purchased Services		71,573.38		71,573.38
Total Other Purchased Services	\$887,562.68	\$6,504,368.24		\$7,391,930.92
600 <u>Supplies</u>				
610 General Supplies	345,502.66	375,967.14		721,469.80
630 Food	1,372.02	1,159.60		2,531.62
640 Books and Periodicals	59,041.02	128,301.05		187,342.07
Total Supplies	\$405,915.70	\$505,427.79		\$911,343.49
700 <u>Property</u>				
752 Capital Equipment – Original and Additional		11,879.87		11,879.87
762 Capitalized Equipment - Replacement		612.54		612.54
Total Property		\$12,492.41		\$12,492.41
800 <u>Other Objects</u>				

LEA : 114067002 Reading SD

Printed 1/29/2020 11:56:31 AM

REVISED SUBMISSION

General Fund (10)				
1110 Regular Programs	<u>Elementary</u>	<u>Secondary</u>	<u>Federal</u>	<u>Total</u>
800 <u>Other Objects</u>				
810 Dues and Fees	1,837.50	2,182.50		4,020.00
Total Other Objects	\$1,837.50	\$2,182.50		\$4,020.00
Total 1110 Regular Programs	\$39,613,089.44	\$42,964,609.45		\$82,577,698.89

LEA : 114067002 Reading SD

Printed 1/29/2020 11:56:31 AM

REVISED SUBMISSION

General Fund (10)				
1190 Federally-Funded Regular Programs		<u>Elementary</u>	<u>Secondary</u>	<u>Federal</u> <u>Total</u>
100 <u>Personnel Services – Salaries</u>				
100	Personnel Services – Salaries			7,024,944.85 7,024,944.85
Total Personnel Services – Salaries			\$7,024,944.85	\$7,024,944.85
200 <u>Personnel Services – Employee Benefits</u>				
210	Group Insurance – Contracted Provider		2,227,500.00	2,227,500.00
220	Social Security Contributions		524,336.69	524,336.69
230	PSERS Retirement Contributions		2,285,017.80	2,285,017.80
250	Unemployment Compensation		(134.50)	(134.50)
260	Workers' Compensation		77,275.09	77,275.09
Total Personnel Services – Employee Benefits			\$5,113,995.08	\$5,113,995.08
300 <u>Purchased Professional and Technical Services</u>				
329	Professional Educational Services – Other		381,405.27	381,405.27
330	Other Professional Services		595.00	595.00
Total Purchased Professional and Technical Services			\$382,000.27	\$382,000.27
500 <u>Other Purchased Services</u>				
510	Student Transportation Services		25,108.37	25,108.37
580	Travel		774.29	774.29
591	Services Purchased Locally		10,006.52	10,006.52
Total Other Purchased Services			\$35,889.18	\$35,889.18
600 <u>Supplies</u>				
610	General Supplies		2,999,238.67	2,999,238.67
630	Food		613.42	613.42
640	Books and Periodicals		1,552,612.01	1,552,612.01
650	Supplies & Fees – Technology Related		135,968.88	135,968.88
Total Supplies			\$4,688,432.98	\$4,688,432.98
700 <u>Property</u>				
752	Capital Equipment – Original and Additional		47,243.00	47,243.00
Total Property			\$47,243.00	\$47,243.00
Total 1190 Federally-Funded Regular Programs			\$17,292,505.36	\$17,292,505.36

LEA : 114067002 Reading SD

Printed 1/29/2020 11:56:31 AM

REVISED SUBMISSION

General Fund (10)				
1200 Special Programs – Elementary / Secondary	Elementary	Secondary	Federal	Total
100 Personnel Services – Salaries				
100 Personnel Services – Salaries	6,190,526.10	5,747,354.34	1,979,881.26	13,917,761.70
Total Personnel Services – Salaries	\$6,190,526.10	\$5,747,354.34	\$1,979,881.26	\$13,917,761.70
200 Personnel Services – Employee Benefits				
210 Group Insurance – Contracted Provider	1,753,316.05	1,717,816.76	1,223,000.00	4,694,132.81
220 Social Security Contributions	460,232.53	429,975.09	147,109.43	1,037,317.05
230 PSERS Retirement Contributions	2,172,779.99	2,027,252.91	320,694.53	4,520,727.43
250 Unemployment Compensation	5,976.30	7,800.30		13,776.60
260 Workers' Compensation	75,984.51	71,567.37	21,773.69	169,325.57
Total Personnel Services – Employee Benefits	\$4,468,289.38	\$4,254,412.43	\$1,712,577.65	\$10,435,279.46
300 Purchased Professional and Technical Services				
322 Professional Educational Services – lus	1,619,720.13	2,492,654.94		4,112,375.07
329 Professional Educational Services – Other	747.00	3,049.00		3,796.00
330 Other Professional Services	1,066,809.91	1,265,272.05		2,332,081.96
Total Purchased Professional and Technical Services	\$2,687,277.04	\$3,760,975.99		\$6,448,253.03
500 Other Purchased Services				
510 Student Transportation Services	88,851.35	89,357.25		178,208.60
561 Tuition To Other School Districts Within the State	251,482.87	912,428.47		1,163,911.34
562 Tuition To Pennsylvania Charter Schools	434,838.71	3,483,501.60		3,918,340.31
563 Tuition To Nonpublic Schools	4,674,819.15	3,146,313.55	192,327.36	8,013,460.06
567 Tuition To Approved Private Schools (APS) and PA Chartered Schools for the Deaf and Blind	38,175.84	140,885.96		179,061.80
568 Tuition To Private Residential Rehabilitative Institutions (PRRI) [In-State] and Detention Centers	652,214.99	963,148.83		1,615,363.82
580 Travel	219,010.69	685.68		219,696.37
594 IU Payment By Withholding for Institutionalized Children's Programs – Special Classes	431.24	287.50		718.74
Total Other Purchased Services	\$6,359,824.84	\$8,736,608.84	\$192,327.36	\$15,288,761.04
600 Supplies				
610 General Supplies	48,282.79	8,035.10	26,887.47	83,205.36
630 Food	17,057.53	17,057.53		34,115.06
Total Supplies	\$65,340.32	\$25,092.63	\$26,887.47	\$117,320.42
700 Property				
752 Capital Equipment – Original and Additional	4,660.00	5,819.18		10,479.18
Total Property	\$4,660.00	\$5,819.18		\$10,479.18
Total 1200 Special Programs – Elementary / Secondary	\$19,775,917.68	\$22,530,263.41	\$3,911,673.74	\$46,217,854.83

LEA : 114067002 Reading SD

Printed 1/29/2020 11:56:31 AM

REVISED SUBMISSION

General Fund (10)				
1210 Life Skills Support	Elementary	Secondary	Federal	Total
100 Personnel Services – Salaries				
100 Personnel Services – Salaries	357,690.95	911,537.32	310,942.47	1,580,170.74
Total Personnel Services – Salaries	\$357,690.95	\$911,537.32	\$310,942.47	\$1,580,170.74
200 Personnel Services – Employee Benefits				
210 Group Insurance – Contracted Provider	121,500.00	336,000.00	175,500.00	633,000.00
220 Social Security Contributions	26,696.82	67,610.86	23,154.70	117,462.38
230 PSERS Retirement Contributions	149,296.63	313,668.85	49,996.72	512,962.20
250 Unemployment Compensation	2,808.00			2,808.00
260 Workers' Compensation	3,934.53	10,027.64	3,420.25	17,382.42
Total Personnel Services – Employee Benefits	\$304,235.98	\$727,307.35	\$252,071.67	\$1,283,615.00
300 Purchased Professional and Technical Services				
322 Professional Educational Services – lus	31,339.33	44,722.95		76,062.28
329 Professional Educational Services – Other	729.00	1,944.00		2,673.00
Total Purchased Professional and Technical Services	\$32,068.33	\$46,666.95		\$78,735.28
500 Other Purchased Services				
561 Tuition To Other School Districts Within the State		4,518.60		4,518.60
563 Tuition To Nonpublic Schools	76,340.48	25,700.00		102,040.48
Total Other Purchased Services	\$76,340.48	\$30,218.60		\$106,559.08
600 Supplies				
610 General Supplies	325.52	866.25	2,182.44	3,374.21
Total Supplies	\$325.52	\$866.25	\$2,182.44	\$3,374.21
Total 1210 Life Skills Support	\$770,661.26	\$1,716,596.47	\$565,196.58	\$3,052,454.31

LEA : 114067002 Reading SD

Printed 1/29/2020 11:56:31 AM

REVISED SUBMISSION

General Fund (10)				
1220 Sensory Support	Elementary	Secondary	Federal	Total
100 Personnel Services – Salaries				
100 Personnel Services – Salaries	640,328.15	264,306.28	36,432.02	941,066.45
Total Personnel Services – Salaries	\$640,328.15	\$264,306.28	\$36,432.02	\$941,066.45
200 Personnel Services – Employee Benefits				
210 Group Insurance – Contracted Provider	169,815.00	70,185.00	24,000.00	264,000.00
220 Social Security Contributions	47,946.55	19,759.68	2,645.66	70,351.89
230 PSERS Retirement Contributions	210,064.45	90,387.82	5,860.67	306,312.94
260 Workers' Compensation	7,043.44	2,905.66	395.23	10,344.33
Total Personnel Services – Employee Benefits	\$434,869.44	\$183,238.16	\$32,901.56	\$651,009.16
300 Purchased Professional and Technical Services				
322 Professional Educational Services – Ius	212,074.00	627,567.26		839,641.26
330 Other Professional Services	414,417.80	344,776.32		759,194.12
Total Purchased Professional and Technical Services	\$626,491.80	\$972,343.58		\$1,598,835.38
500 Other Purchased Services				
580 Travel	69.45	69.45		138.90
Total Other Purchased Services	\$69.45	\$69.45		\$138.90
600 Supplies				
610 General Supplies	13,970.31	483.35	6,334.80	20,788.46
Total Supplies	\$13,970.31	\$483.35	\$6,334.80	\$20,788.46
700 Property				
752 Capital Equipment – Original and Additional	4,660.00			4,660.00
Total Property	\$4,660.00			\$4,660.00
Total 1220 Sensory Support	\$1,720,389.15	\$1,420,440.82	\$75,668.38	\$3,216,498.35

LEA : 114067002 Reading SD

Printed 1/29/2020 11:56:31 AM

REVISED SUBMISSION

General Fund (10)

1230 Emotional Support

	Elementary	Secondary	Federal	Total
100 <u>Personnel Services – Salaries</u>				
100 Personnel Services – Salaries	1,386,757.79	875,782.58	679,637.27	2,942,177.64
Total Personnel Services – Salaries	\$1,386,757.79	\$875,782.58	\$679,637.27	\$2,942,177.64
200 <u>Personnel Services – Employee Benefits</u>				
210 Group Insurance – Contracted Provider	506,475.00	336,975.00	459,000.00	1,302,450.00
220 Social Security Contributions	103,632.61	65,249.64	50,517.18	219,399.43
230 PSERS Retirement Contributions	512,511.88	332,589.00	110,671.28	955,772.16
250 Unemployment Compensation	3,168.30	339.00		3,507.30
260 Workers' Compensation	15,255.06	9,634.29	7,476.52	32,365.87
Total Personnel Services – Employee Benefits	\$1,141,042.85	\$744,786.93	\$627,664.98	\$2,513,494.76
300 <u>Purchased Professional and Technical Services</u>				
322 Professional Educational Services – lus	360,990.42	788,766.84		1,149,757.26
329 Professional Educational Services – Other		972.00		972.00
330 Other Professional Services	56,842.30	100,382.62		157,224.92
Total Purchased Professional and Technical Services	\$417,832.72	\$890,121.46		\$1,307,954.18
500 <u>Other Purchased Services</u>				
510 Student Transportation Services	260.68			260.68
561 Tuition To Other School Districts Within the State	182,262.81	551,286.58		733,549.39
563 Tuition To Nonpublic Schools	4,488,199.56	2,975,415.90	192,327.36	7,655,942.82
580 Travel	218,400.00			218,400.00
Total Other Purchased Services	\$4,889,123.05	\$3,526,702.48	\$192,327.36	\$8,608,152.89
600 <u>Supplies</u>				
610 General Supplies	17,399.68	1,690.90	6,348.05	25,438.63
Total Supplies	\$17,399.68	\$1,690.90	\$6,348.05	\$25,438.63
Total 1230 Emotional Support	\$7,852,156.09	\$6,039,084.35	\$1,505,977.66	\$15,397,218.10

LEA : 114067002 Reading SD

Printed 1/29/2020 11:56:31 AM

REVISED SUBMISSION

General Fund (10)

1240 Academic Support

	Elementary	Secondary	Federal	Total
100 <u>Personnel Services – Salaries</u>				
100 Personnel Services – Salaries	3,575,229.45	3,178,791.39	814,281.64	7,568,302.48
Total Personnel Services – Salaries	\$3,575,229.45	\$3,178,791.39	\$814,281.64	\$7,568,302.48
200 <u>Personnel Services – Employee Benefits</u>				
210 Group Insurance – Contracted Provider	826,526.05	802,156.76	491,000.00	2,119,682.81
220 Social Security Contributions	264,853.03	238,683.79	60,410.88	563,947.70
230 PSERS Retirement Contributions	1,218,706.63	1,107,592.00	131,669.32	2,457,967.95
250 Unemployment Compensation		597.30		597.30
260 Workers' Compensation	47,215.86	43,312.97	8,957.25	99,486.08
Total Personnel Services – Employee Benefits	\$2,357,301.57	\$2,192,342.82	\$692,037.45	\$5,241,681.84
300 <u>Purchased Professional and Technical Services</u>				
322 Professional Educational Services – lus	102,672.54	220,036.82		322,709.36
330 Other Professional Services	33,964.22			33,964.22
Total Purchased Professional and Technical Services	\$136,636.76	\$220,036.82		\$356,673.58
500 <u>Other Purchased Services</u>				
510 Student Transportation Services	88,517.68	88,517.69		177,035.37
561 Tuition To Other School Districts Within the State	53,493.70	295,121.34		348,615.04
563 Tuition To Nonpublic Schools	104,541.47	71,636.75		176,178.22
Total Other Purchased Services	\$246,552.85	\$455,275.78		\$701,828.63
Total 1240 Academic Support	\$6,315,720.63	\$6,046,446.81	\$1,506,319.09	\$13,868,486.53

LEA : 114067002 Reading SD

Printed 1/29/2020 11:56:31 AM

REVISED SUBMISSION

General Fund (10)

1241 Learning Support – Public	Elementary	Secondary	Federal	Total
100 Personnel Services – Salaries				
100 Personnel Services – Salaries	3,264,897.86	2,947,236.04	814,281.64	7,026,415.54
Total Personnel Services – Salaries	\$3,264,897.86	\$2,947,236.04	\$814,281.64	\$7,026,415.54
200 Personnel Services – Employee Benefits				
210 Group Insurance – Contracted Provider	754,526.05	733,156.76	491,000.00	1,978,682.81
220 Social Security Contributions	241,485.39	221,510.47	60,410.88	523,406.74
230 PSERS Retirement Contributions	1,117,631.13	1,034,806.94	131,669.32	2,284,107.39
250 Unemployment Compensation		597.30		597.30
260 Workers' Compensation	43,802.06	40,765.83	8,957.25	93,525.14
Total Personnel Services – Employee Benefits	\$2,157,444.63	\$2,030,837.30	\$692,037.45	\$4,880,319.38
300 Purchased Professional and Technical Services				
322 Professional Educational Services – lus	102,672.54	217,694.36		320,366.90
330 Other Professional Services	33,964.22			33,964.22
Total Purchased Professional and Technical Services	\$136,636.76	\$217,694.36		\$354,331.12
500 Other Purchased Services				
510 Student Transportation Services	88,517.68	88,517.69		177,035.37
561 Tuition To Other School Districts Within the State	53,493.70	276,735.38		330,229.08
563 Tuition To Nonpublic Schools	104,457.47	71,034.75		175,492.22
Total Other Purchased Services	\$246,468.85	\$436,287.82		\$682,756.67
Total 1241 Learning Support – Public	\$5,805,448.10	\$5,632,055.52	\$1,506,319.09	\$12,943,822.71

LEA : 114067002 Reading SD

Printed 1/29/2020 11:56:31 AM

REVISED SUBMISSION

General Fund (10)				
1243 Gifted Support	<u>Elementary</u>	<u>Secondary</u>	<u>Federal</u>	<u>Total</u>
100 <u>Personnel Services – Salaries</u>				
100 Personnel Services – Salaries	310,331.59	231,555.35		541,886.94
Total Personnel Services – Salaries	\$310,331.59	\$231,555.35		\$541,886.94
200 <u>Personnel Services – Employee Benefits</u>				
210 Group Insurance – Contracted Provider	72,000.00	69,000.00		141,000.00
220 Social Security Contributions	23,367.64	17,173.32		40,540.96
230 PSERS Retirement Contributions	101,075.50	72,785.06		173,860.56
260 Workers' Compensation	3,413.80	2,547.14		5,960.94
Total Personnel Services – Employee Benefits	\$199,856.94	\$161,505.52		\$361,362.46
300 <u>Purchased Professional and Technical Services</u>				
322 Professional Educational Services – Ius		2,342.46		2,342.46
Total Purchased Professional and Technical Services		\$2,342.46		\$2,342.46
500 <u>Other Purchased Services</u>				
561 Tuition To Other School Districts Within the State		18,385.96		18,385.96
563 Tuition To Nonpublic Schools	84.00	602.00		686.00
Total Other Purchased Services	\$84.00	\$18,987.96		\$19,071.96
Total 1243 Gifted Support	\$510,272.53	\$414,391.29		\$924,663.82

LEA : 114067002 Reading SD

Printed 1/29/2020 11:56:31 AM

REVISED SUBMISSION

General Fund (10)

1260 Physical Support	<u>Elementary</u>	<u>Secondary</u>	<u>Federal</u>	<u>Total</u>
100 <u>Personnel Services – Salaries</u>				
100 Personnel Services – Salaries			23,500.68	23,500.68
Total Personnel Services – Salaries			\$23,500.68	\$23,500.68
200 <u>Personnel Services – Employee Benefits</u>				
210 Group Insurance – Contracted Provider			18,000.00	18,000.00
220 Social Security Contributions			1,755.14	1,755.14
230 PSERS Retirement Contributions		3,794.44	3,794.44	7,588.88
260 Workers' Compensation			258.56	258.56
Total Personnel Services – Employee Benefits		\$3,794.44	\$23,808.14	\$27,602.58
Total 1260 Physical Support		\$3,794.44	\$47,308.82	\$51,103.26

LEA : 114067002 Reading SD

Printed 1/29/2020 11:56:31 AM

REVISED SUBMISSION

General Fund (10)				
1270 Multi-Handicapped Support	Elementary	Secondary	Federal	Total
100 Personnel Services – Salaries				
100 Personnel Services – Salaries	208,707.08	202,884.67	115,087.18	526,678.93
Total Personnel Services – Salaries	\$208,707.08	\$202,884.67	\$115,087.18	\$526,678.93
200 Personnel Services – Employee Benefits				
210 Group Insurance – Contracted Provider	111,000.00	93,000.00	55,500.00	259,500.00
220 Social Security Contributions	15,477.70	15,221.51	8,625.87	39,325.08
230 PSERS Retirement Contributions	75,145.04	77,048.48	18,702.10	170,895.62
250 Unemployment Compensation		6,864.00		6,864.00
260 Workers' Compensation	2,295.81	2,231.92	1,265.88	5,793.61
Total Personnel Services – Employee Benefits	\$203,918.55	\$194,365.91	\$84,093.85	\$482,378.31
300 Purchased Professional and Technical Services				
322 Professional Educational Services – lus	59,820.29	55,207.02		115,027.31
329 Professional Educational Services – Other	18.00	133.00		151.00
330 Other Professional Services	53,266.27			53,266.27
Total Purchased Professional and Technical Services	\$113,104.56	\$55,340.02		\$168,444.58
500 Other Purchased Services				
510 Student Transportation Services	72.99	839.56		912.55
561 Tuition To Other School Districts Within the State	15,726.36	61,501.95		77,228.31
563 Tuition To Nonpublic Schools	5,737.64	73,560.90		79,298.54
Total Other Purchased Services	\$21,536.99	\$135,902.41		\$157,439.40
600 Supplies				
610 General Supplies	11,818.15	225.47	11,976.27	24,019.89
Total Supplies	\$11,818.15	\$225.47	\$11,976.27	\$24,019.89
700 Property				
752 Capital Equipment – Original and Additional		5,819.18		5,819.18
Total Property		\$5,819.18		\$5,819.18
Total 1270 Multi-Handicapped Support	\$559,085.33	\$594,537.66	\$211,157.30	\$1,364,780.29

LEA : 114067002 Reading SD

Printed 1/29/2020 11:56:31 AM

REVISED SUBMISSION

General Fund (10)

1280 Early Intervention Support

	<u>Elementary</u>	<u>Secondary</u>	<u>Federal</u>	<u>Total</u>
300 <u>Purchased Professional and Technical Services</u>				
322 Professional Educational Services – lus	97,645.50			97,645.50
Total Purchased Professional and Technical Services	\$97,645.50			\$97,645.50
Total 1280 Early Intervention Support	\$97,645.50			\$97,645.50

LEA : 114067002 Reading SD

Printed 1/29/2020 11:56:31 AM

REVISED SUBMISSION

General Fund (10)				
1290 Special Programs - Other Support	Elementary	Secondary	Federal	Total
100 <u>Personnel Services – Salaries</u>				
100 Personnel Services – Salaries	21,812.68	314,052.10		335,864.78
Total Personnel Services – Salaries	\$21,812.68	\$314,052.10		\$335,864.78
200 <u>Personnel Services – Employee Benefits</u>				
210 Group Insurance – Contracted Provider	18,000.00	79,500.00		97,500.00
220 Social Security Contributions	1,625.82	23,449.61		25,075.43
230 PSERS Retirement Contributions	7,055.36	102,172.32		109,227.68
260 Workers' Compensation	239.81	3,454.89		3,694.70
Total Personnel Services – Employee Benefits	\$26,920.99	\$208,576.82		\$235,497.81
300 <u>Purchased Professional and Technical Services</u>				
322 Professional Educational Services – Ius	755,178.05	756,354.05		1,511,532.10
330 Other Professional Services	508,319.32	820,113.11		1,328,432.43
Total Purchased Professional and Technical Services	\$1,263,497.37	\$1,576,467.16		\$2,839,964.53
500 <u>Other Purchased Services</u>				
562 Tuition To Pennsylvania Charter Schools	434,838.71	3,483,501.60		3,918,340.31
567 Tuition To Approved Private Schools (APS) and PA Chartered Schools for the Deaf and Blind	38,175.84	140,885.96		179,061.80
568 Tuition To Private Residential Rehabilitative Institutions (PRRI) [In-State] and Detention Centers	652,214.99	963,148.83		1,615,363.82
580 Travel	541.24	616.23		1,157.47
594 IU Payment By Withholding for Institutionalized Children’s Programs – Special Classes	431.24	287.50		718.74
Total Other Purchased Services	\$1,126,202.02	\$4,588,440.12		\$5,714,642.14
600 <u>Supplies</u>				
610 General Supplies	4,769.13	4,769.13	45.91	9,584.17
630 Food	17,057.53	17,057.53		34,115.06
Total Supplies	\$21,826.66	\$21,826.66	\$45.91	\$43,699.23
Total 1290 Special Programs - Other Support	\$2,460,259.72	\$6,709,362.86	\$45.91	\$9,169,668.49

LEA : 114067002 Reading SD

Printed 1/29/2020 11:56:31 AM

REVISED SUBMISSION

General Fund (10)

1300 Vocational Education

<u>Elementary</u>	<u>Secondary</u>	<u>Federal</u>	<u>Total</u>
-------------------	------------------	----------------	--------------

500 Other Purchased Services

564 Tuition To Career and Technology Centers	5,101,858.95		5,101,858.95
--	--------------	--	--------------

Total Other Purchased Services	\$5,101,858.95		\$5,101,858.95
---------------------------------------	-----------------------	--	-----------------------

Total 1300 Vocational Education	\$5,101,858.95		\$5,101,858.95
--	-----------------------	--	-----------------------

LEA : 114067002 Reading SD

Printed 1/29/2020 11:56:31 AM

REVISED SUBMISSION

General Fund (10)				
1400 Other Instructional Programs – Elementary / Secondary	<u>Elementary</u>	<u>Secondary</u>	<u>Federal</u>	<u>Total</u>
100 <u>Personnel Services – Salaries</u>				
100 Personnel Services – Salaries	7,656.66	142,141.45	75,917.05	225,715.16
Total Personnel Services – Salaries	\$7,656.66	\$142,141.45	\$75,917.05	\$225,715.16
200 <u>Personnel Services – Employee Benefits</u>				
210 Group Insurance – Contracted Provider		18,000.00		18,000.00
220 Social Security Contributions	585.35	10,738.48	5,794.35	17,118.18
230 PSERS Retirement Contributions	2,493.78	58,690.23	12,363.07	73,547.08
260 Workers' Compensation	84.26	1,563.72	835.11	2,483.09
Total Personnel Services – Employee Benefits	\$3,163.39	\$88,992.43	\$18,992.53	\$111,148.35
300 <u>Purchased Professional and Technical Services</u>				
322 Professional Educational Services – Ius		2,585,642.59		2,585,642.59
390 Other Purchased Professional and Technical Services			33,274.08	33,274.08
Total Purchased Professional and Technical Services		\$2,585,642.59	\$33,274.08	\$2,618,916.67
500 <u>Other Purchased Services</u>				
561 Tuition To Other School Districts Within the State		212,690.81		212,690.81
563 Tuition To Nonpublic Schools	1,559.25	17,103.01		18,662.26
Total Other Purchased Services	\$1,559.25	\$229,793.82		\$231,353.07
600 <u>Supplies</u>				
610 General Supplies			7,243.83	7,243.83
Total Supplies			\$7,243.83	\$7,243.83
Total 1400 Other Instructional Programs – Elementary / Secondary	\$12,379.30	\$3,046,570.29	\$135,427.49	\$3,194,377.08

LEA : 114067002 Reading SD

Printed 1/29/2020 11:56:31 AM

REVISED SUBMISSION

General Fund (10)

1420 Summer School

	<u>Elementary</u>	<u>Secondary</u>	<u>Federal</u>	<u>Total</u>
100 <u>Personnel Services – Salaries</u>				
100 Personnel Services – Salaries		45,366.75	18,420.75	63,787.50
Total Personnel Services – Salaries		\$45,366.75	\$18,420.75	\$63,787.50
200 <u>Personnel Services – Employee Benefits</u>				
220 Social Security Contributions		3,470.57	1,409.20	4,879.77
230 PSERS Retirement Contributions		17,775.77	2,999.83	20,775.60
260 Workers’ Compensation		499.04	202.62	701.66
Total Personnel Services – Employee Benefits		\$21,745.38	\$4,611.65	\$26,357.03
Total 1420 Summer School		\$67,112.13	\$23,032.40	\$90,144.53

LEA : 114067002 Reading SD

Printed 1/29/2020 11:56:31 AM

REVISED SUBMISSION

General Fund (10)

1430 Homebound Instruction	<u>Elementary</u>	<u>Secondary</u>	<u>Federal</u>	<u>Total</u>
100 <u>Personnel Services – Salaries</u>				
100 Personnel Services – Salaries	7,656.66	30,599.76		38,256.42
Total Personnel Services – Salaries	\$7,656.66	\$30,599.76		\$38,256.42
200 <u>Personnel Services – Employee Benefits</u>				
220 Social Security Contributions	585.35	2,339.93		2,925.28
230 PSERS Retirement Contributions	2,493.78	9,966.30		12,460.08
260 Workers’ Compensation	84.26	336.68		420.94
Total Personnel Services – Employee Benefits	\$3,163.39	\$12,642.91		\$15,806.30
500 <u>Other Purchased Services</u>				
563 Tuition To Nonpublic Schools	1,559.25	1,337.00		2,896.25
Total Other Purchased Services	\$1,559.25	\$1,337.00		\$2,896.25
Total 1430 Homebound Instruction	\$12,379.30	\$44,579.67		\$56,958.97

LEA : 114067002 Reading SD

Printed 1/29/2020 11:56:31 AM

REVISED SUBMISSION

General Fund (10)				
1440 Alternative Regular Education Programs	<u>Elementary</u>	<u>Secondary</u>	<u>Federal</u>	<u>Total</u>
100 <u>Personnel Services – Salaries</u>				
100 Personnel Services – Salaries		66,174.94		66,174.94
Total Personnel Services – Salaries		\$66,174.94		\$66,174.94
200 <u>Personnel Services – Employee Benefits</u>				
210 Group Insurance – Contracted Provider		18,000.00		18,000.00
220 Social Security Contributions		4,927.98		4,927.98
230 PSERS Retirement Contributions		21,553.04		21,553.04
260 Workers' Compensation		728.00		728.00
Total Personnel Services – Employee Benefits		\$45,209.02		\$45,209.02
300 <u>Purchased Professional and Technical Services</u>				
322 Professional Educational Services – Ius		2,585,642.59		2,585,642.59
Total Purchased Professional and Technical Services		\$2,585,642.59		\$2,585,642.59
500 <u>Other Purchased Services</u>				
561 Tuition To Other School Districts Within the State		212,690.81		212,690.81
563 Tuition To Nonpublic Schools		15,766.01		15,766.01
Total Other Purchased Services		\$228,456.82		\$228,456.82
Total 1440 Alternative Regular Education Programs		\$2,925,483.37		\$2,925,483.37

LEA : 114067002 Reading SD

Printed 1/29/2020 11:56:31 AM

REVISED SUBMISSION

General Fund (10)

1441 Adjudicated / Court-Placed Programs	<u>Elementary</u>	<u>Secondary</u>	<u>Federal</u>	<u>Total</u>
300 <u>Purchased Professional and Technical Services</u>				
322 Professional Educational Services – Ius		370,603.59		370,603.59
Total Purchased Professional and Technical Services		\$370,603.59		\$370,603.59
500 <u>Other Purchased Services</u>				
561 Tuition To Other School Districts Within the State		212,690.81		212,690.81
563 Tuition To Nonpublic Schools		15,766.01		15,766.01
Total Other Purchased Services		\$228,456.82		\$228,456.82
Total 1441 Adjudicated / Court-Placed Programs		\$599,060.41		\$599,060.41

LEA : 114067002 Reading SD

Printed 1/29/2020 11:56:31 AM

REVISED SUBMISSION

General Fund (10)

1442 Alternative Education Programs	<u>Elementary</u>	<u>Secondary</u>	<u>Federal</u>	<u>Total</u>
100 <u>Personnel Services – Salaries</u>				
100 Personnel Services – Salaries		66,174.94		66,174.94
Total Personnel Services – Salaries		\$66,174.94		\$66,174.94
200 <u>Personnel Services – Employee Benefits</u>				
210 Group Insurance – Contracted Provider		18,000.00		18,000.00
220 Social Security Contributions		4,927.98		4,927.98
230 PSERS Retirement Contributions		21,553.04		21,553.04
260 Workers' Compensation		728.00		728.00
Total Personnel Services – Employee Benefits		\$45,209.02		\$45,209.02
300 <u>Purchased Professional and Technical Services</u>				
322 Professional Educational Services – Ius		2,215,039.00		2,215,039.00
Total Purchased Professional and Technical Services		\$2,215,039.00		\$2,215,039.00
Total 1442 Alternative Education Programs		\$2,326,422.96		\$2,326,422.96

LEA : 114067002 Reading SD

Printed 1/29/2020 11:56:31 AM

REVISED SUBMISSION

General Fund (10)				
1490 Additional Other Instructional Programs	<u>Elementary</u>	<u>Secondary</u>	<u>Federal</u>	<u>Total</u>
100 <u>Personnel Services – Salaries</u>				
100 Personnel Services – Salaries			57,496.30	57,496.30
Total Personnel Services – Salaries			\$57,496.30	\$57,496.30
200 <u>Personnel Services – Employee Benefits</u>				
220 Social Security Contributions			4,385.15	4,385.15
230 PSERS Retirement Contributions		9,395.12	9,363.24	18,758.36
260 Workers’ Compensation			632.49	632.49
Total Personnel Services – Employee Benefits		\$9,395.12	\$14,380.88	\$23,776.00
300 <u>Purchased Professional and Technical Services</u>				
390 Other Purchased Professional and Technical Services			33,274.08	33,274.08
Total Purchased Professional and Technical Services			\$33,274.08	\$33,274.08
600 <u>Supplies</u>				
610 General Supplies			7,243.83	7,243.83
Total Supplies			\$7,243.83	\$7,243.83
Total 1490 Additional Other Instructional Programs		\$9,395.12	\$112,395.09	\$121,790.21

LEA : 114067002 Reading SD

Printed 1/29/2020 11:56:31 AM

REVISED SUBMISSION

General Fund (10)

1500 Nonpublic School Programs

Elementary Secondary Federal Total

300 Purchased Professional and Technical Services

322 Professional Educational Services – Ius			572,321.00	572,321.00
329 Professional Educational Services – Other			3,344.94	3,344.94

Total Purchased Professional and Technical Services			\$575,665.94	\$575,665.94
Total 1500 Nonpublic School Programs			\$575,665.94	\$575,665.94

LEA : 114067002 Reading SD

Printed 1/29/2020 11:56:31 AM

REVISED SUBMISSION

General Fund (10)

1600 Adult Education Programs

<u>Elementary</u>	<u>Secondary</u>	<u>Federal</u>	<u>Total</u>
-------------------	------------------	----------------	--------------

200 Personnel Services – Employee Benefits

250 Unemployment Compensation			18,217.24
-------------------------------	--	--	-----------

Total Personnel Services – Employee Benefits			\$18,217.24
---	--	--	--------------------

Total 1600 Adult Education Programs			\$18,217.24
--	--	--	--------------------

LEA : 114067002 Reading SD

Printed 1/29/2020 11:56:31 AM

REVISED SUBMISSION

General Fund (10)

1800 Pre-Kindergarten

Elementary Secondary Federal Total

100 <u>Personnel Services – Salaries</u>				
100 Personnel Services – Salaries				1,068,077.29
Total Personnel Services – Salaries				\$1,068,077.29
200 <u>Personnel Services – Employee Benefits</u>				
210 Group Insurance – Contracted Provider				408,000.00
220 Social Security Contributions				79,839.73
230 PSERS Retirement Contributions				341,137.79
250 Unemployment Compensation				(64.08)
260 Workers' Compensation				11,749.35
Total Personnel Services – Employee Benefits				\$840,662.79
Total 1800 Pre-Kindergarten				\$1,908,740.08

LEA : 114067002 Reading SD

Printed 1/29/2020 11:56:31 AM

REVISED SUBMISSION

General Fund (10)

1801 Pre-K Instruction

Elementary Secondary Federal Total

100 <u>Personnel Services – Salaries</u>				
100 Personnel Services – Salaries				1,068,077.29
Total Personnel Services – Salaries				\$1,068,077.29
200 <u>Personnel Services – Employee Benefits</u>				
210 Group Insurance – Contracted Provider				408,000.00
220 Social Security Contributions				79,839.73
230 PSERS Retirement Contributions				341,137.79
250 Unemployment Compensation				(64.08)
260 Workers' Compensation				11,749.35
Total Personnel Services – Employee Benefits				\$840,662.79
Total 1801 Pre-K Instruction				\$1,908,740.08

LEA : 114067002 Reading SD

Printed 1/29/2020 11:56:42 AM

REVISED SUBMISSION

General Fund (10)

2000 Support Services		Total
100 <u>Personnel Services – Salaries</u>		
100 Personnel Services – Salaries		25,050,543.18
Total Personnel Services – Salaries		\$25,050,543.18
200 <u>Personnel Services – Employee Benefits</u>		
210 Group Insurance – Contracted Provider		6,515,050.35
220 Social Security Contributions		1,892,363.41
230 PSERS Retirement Contributions		8,209,982.85
240 Tuition Reimbursement		279,189.00
250 Unemployment Compensation		45,016.75
260 Workers' Compensation		478,031.53
280 Other Post-Employment Benefits (OPEB)		6,589,661.64
299 All Other Employee Benefits		(4,599.54)
Total Personnel Services – Employee Benefits		\$24,004,695.99
300 <u>Purchased Professional and Technical Services</u>		
310 Official / Administrative Services		52,753.78
322 Professional Educational Services – Ius		685,675.76
324 Professional Educational Services – Employee Training and Development Services		786,847.10
329 Professional Educational Services – Other		180,727.36
330 Other Professional Services		2,906,494.66
340 Technical Services		477,786.37
390 Other Purchased Professional and Technical Services		33,715.08
Total Purchased Professional and Technical Services		\$5,124,000.11
400 <u>Purchased Property Services</u>		
410 Cleaning Services		176,842.91
420 Utility Services		790,909.89
430 Repairs and Maintenance Services		910,599.33
440 Rentals		533,222.21
460 Extermination Services		25,548.70
Total Purchased Property Services		\$2,437,123.04
500 <u>Other Purchased Services</u>		
513 Contracted Carriers		24,336.90
516 Student Transportation Services From the IU		5,276,137.17
520 Insurance – General		820,924.42
521 Fire Insurance		29,454.00
522 Automotive Liability Insurance		71,737.00
529 Other Insurance		2,672.00
530 Communications		341,281.34
549 Other Advertising/Public Relations		28,539.75
550 Printing and Binding		14,469.57
580 Travel		70,832.11
591 Services Purchased Locally		305.00
595 IU Payments By Withholding		49,883.28
596 Direct Payments To Intermediate Units		1,039.78
599 Other Miscellaneous Purchased Services		794.70

LEA : 114067002 Reading SD

Printed 1/29/2020 11:56:42 AM

REVISED SUBMISSION

General Fund (10)

2000 Support Services

	Total
Total Other Purchased Services	\$6,732,407.02
600 <u>Supplies</u>	
610 General Supplies	2,723,376.85
620 Energy	2,580,624.05
630 Food	18,002.84
640 Books and Periodicals	78,499.22
650 Supplies & Fees – Technology Related	7,343.00
Total Supplies	\$5,407,845.96
700 <u>Property</u>	
752 Capital Equipment – Original and Additional	48,460.00
762 Capitalized Equipment - Replacement	219,766.85
768 Capitalized Technology Software - Replacement	849,183.78
Total Property	\$1,117,410.63
800 <u>Other Objects</u>	
810 Dues and Fees	165,566.62
820 Claims and Judgments Against the LEA	440,000.00
890 Miscellaneous Expenditures	30,738.61
Total Other Objects	\$636,305.23
Total 2000 Support Services	\$70,510,331.16

LEA : 114067002 Reading SD

Printed 1/29/2020 11:56:42 AM

REVISED SUBMISSION

General Fund (10)				
2100 Support Services – Students	Elementary	Secondary	Federal	Total
100 Personnel Services – Salaries				
100 Personnel Services – Salaries	1,175,088.04	1,855,452.91	1,041,420.79	4,945,680.26
Total Personnel Services – Salaries	\$1,175,088.04	\$1,855,452.91	\$1,041,420.79	\$4,945,680.26
200 Personnel Services – Employee Benefits				
210 Group Insurance – Contracted Provider	309,750.00	497,850.00	238,500.00	1,303,100.00
220 Social Security Contributions	87,642.42	138,375.11	78,247.12	369,418.51
230 PSERS Retirement Contributions	471,120.24	689,793.60	169,321.11	1,613,382.99
250 Unemployment Compensation				10,909.86
260 Workers' Compensation	12,926.13	20,410.37	11,455.91	53,760.22
Total Personnel Services – Employee Benefits	\$881,438.79	\$1,346,429.08	\$497,524.14	\$3,350,571.58
300 Purchased Professional and Technical Services				
322 Professional Educational Services – lus	318,485.59	275,356.17		593,841.76
324 Professional Educational Services – Employee Training and Development Services	87.50	87.50		765.00
329 Professional Educational Services – Other	64,918.00	64,918.00	22,368.15	152,204.15
330 Other Professional Services	36,455.30	36,455.30		72,910.60
Total Purchased Professional and Technical Services	\$419,946.39	\$376,816.97	\$22,368.15	\$819,721.51
500 Other Purchased Services				
580 Travel	6,751.52	6,751.52		16,181.33
591 Services Purchased Locally		305.00		305.00
Total Other Purchased Services	\$6,751.52	\$7,056.52		\$16,486.33
600 Supplies				
610 General Supplies	17,569.12	21,460.38	870.00	39,899.50
630 Food		130.97		130.97
Total Supplies	\$17,569.12	\$21,591.35	\$870.00	\$40,030.47
Total 2100 Support Services – Students	\$2,500,793.86	\$3,607,346.83	\$1,562,183.08	\$9,172,490.15

LEA : 114067002 Reading SD

Printed 1/29/2020 11:56:42 AM

REVISED SUBMISSION

General Fund (10)				
2110 Supervision of Student Services	Elementary	Secondary	Federal	Total
100 Personnel Services – Salaries				
100 Personnel Services – Salaries	145,049.01	166,877.83		311,926.84
Total Personnel Services – Salaries	\$145,049.01	\$166,877.83		\$311,926.84
200 Personnel Services – Employee Benefits				
210 Group Insurance – Contracted Provider	48,750.00	57,650.00		106,400.00
220 Social Security Contributions	10,855.49	12,500.18		23,355.67
230 PSERS Retirement Contributions	46,728.59	53,691.61		100,420.20
260 Workers' Compensation	1,595.43	1,835.57		3,431.00
Total Personnel Services – Employee Benefits	\$107,929.51	\$125,677.36		\$233,606.87
300 Purchased Professional and Technical Services				
324 Professional Educational Services – Employee Training and Development Services	87.50	87.50		175.00
329 Professional Educational Services – Other	64,918.00	64,918.00		129,836.00
330 Other Professional Services	145.00	145.00		290.00
Total Purchased Professional and Technical Services	\$65,150.50	\$65,150.50		\$130,301.00
500 Other Purchased Services				
580 Travel	162.19	162.19		324.38
Total Other Purchased Services	\$162.19	\$162.19		\$324.38
600 Supplies				
610 General Supplies	27.28	27.29		54.57
Total Supplies	\$27.28	\$27.29		\$54.57
Total 2110 Supervision of Student Services	\$318,318.49	\$357,895.17		\$676,213.66

LEA : 114067002 Reading SD

Printed 1/29/2020 11:56:42 AM

REVISED SUBMISSION

General Fund (10)

2111 Supervision of Student Services – Head of Component	<u>Elementary</u>	<u>Secondary</u>	<u>Federal</u>	<u>Total</u>
100 <u>Personnel Services – Salaries</u>				
100 Personnel Services – Salaries	56,176.99	56,176.99		112,353.98
Total Personnel Services – Salaries	\$56,176.99	\$56,176.99		\$112,353.98
200 <u>Personnel Services – Employee Benefits</u>				
210 Group Insurance – Contracted Provider	8,800.00	8,800.00		17,600.00
220 Social Security Contributions	4,205.66	4,205.66		8,411.32
230 PSERS Retirement Contributions	18,157.11	18,157.11		36,314.22
260 Workers' Compensation	617.92	617.93		1,235.85
Total Personnel Services – Employee Benefits	\$31,780.69	\$31,780.70		\$63,561.39
300 <u>Purchased Professional and Technical Services</u>				
330 Other Professional Services	145.00	145.00		290.00
Total Purchased Professional and Technical Services	\$145.00	\$145.00		\$290.00
Total 2111 Supervision of Student Services – Head of Component	\$88,102.68	\$88,102.69		\$176,205.37

LEA : 114067002 Reading SD

Printed 1/29/2020 11:56:42 AM

REVISED SUBMISSION

General Fund (10)				
2119 Supervision of Student Services – All Other Supervision	<u>Elementary</u>	<u>Secondary</u>	<u>Federal</u>	<u>Total</u>
100 <u>Personnel Services – Salaries</u>				
100 Personnel Services – Salaries	88,872.02	110,700.84		199,572.86
Total Personnel Services – Salaries	\$88,872.02	\$110,700.84		\$199,572.86
200 <u>Personnel Services – Employee Benefits</u>				
210 Group Insurance – Contracted Provider	39,950.00	48,850.00		88,800.00
220 Social Security Contributions	6,649.83	8,294.52		14,944.35
230 PSERS Retirement Contributions	28,571.48	35,534.50		64,105.98
260 Workers' Compensation	977.51	1,217.64		2,195.15
Total Personnel Services – Employee Benefits	\$76,148.82	\$93,896.66		\$170,045.48
300 <u>Purchased Professional and Technical Services</u>				
324 Professional Educational Services – Employee Training and Development Services	87.50	87.50		175.00
329 Professional Educational Services – Other	64,918.00	64,918.00		129,836.00
Total Purchased Professional and Technical Services	\$65,005.50	\$65,005.50		\$130,011.00
500 <u>Other Purchased Services</u>				
580 Travel	162.19	162.19		324.38
Total Other Purchased Services	\$162.19	\$162.19		\$324.38
600 <u>Supplies</u>				
610 General Supplies	27.28	27.29		54.57
Total Supplies	\$27.28	\$27.29		\$54.57
Total 2119 Supervision of Student Services – All Other Supervision	\$230,215.81	\$269,792.48		\$500,008.29

LEA : 114067002 Reading SD

Printed 1/29/2020 11:56:42 AM

REVISED SUBMISSION

General Fund (10)				
2120 Guidance Services	Elementary	Secondary	Federal	Total
100 Personnel Services – Salaries				
100 Personnel Services – Salaries	996,382.03	1,654,918.08	115,670.94	2,766,971.05
Total Personnel Services – Salaries	\$996,382.03	\$1,654,918.08	\$115,670.94	\$2,766,971.05
200 Personnel Services – Employee Benefits				
210 Group Insurance – Contracted Provider	261,000.00	440,200.00	33,000.00	734,200.00
220 Social Security Contributions	74,212.18	123,300.16	8,549.15	206,061.49
230 PSERS Retirement Contributions	324,212.66	563,866.90	18,782.78	906,862.34
260 Workers' Compensation	10,960.46	18,204.56	1,272.25	30,437.27
Total Personnel Services – Employee Benefits	\$670,385.30	\$1,145,571.62	\$61,604.18	\$1,877,561.10
500 Other Purchased Services				
591 Services Purchased Locally		305.00		305.00
Total Other Purchased Services		\$305.00		\$305.00
600 Supplies				
610 General Supplies		3,891.24		3,891.24
630 Food		130.97		130.97
Total Supplies		\$4,022.21		\$4,022.21
Total 2120 Guidance Services	\$1,666,767.33	\$2,804,816.91	\$177,275.12	\$4,648,859.36

LEA : 114067002 Reading SD

Printed 1/29/2020 11:56:42 AM

REVISED SUBMISSION

General Fund (10)

2130 Attendance Services

Elementary Secondary Federal Total

100 <u>Personnel Services – Salaries</u>				
100 Personnel Services – Salaries				339,235.17
Total Personnel Services – Salaries				\$339,235.17
200 <u>Personnel Services – Employee Benefits</u>				
210 Group Insurance – Contracted Provider				97,500.00
220 Social Security Contributions				25,437.65
230 PSERS Retirement Contributions				110,272.38
250 Unemployment Compensation				10,909.86
260 Workers' Compensation				3,731.83
Total Personnel Services – Employee Benefits				\$247,851.72
500 <u>Other Purchased Services</u>				
580 Travel				1,610.29
Total Other Purchased Services				\$1,610.29
Total 2130 Attendance Services				\$588,697.18

LEA : 114067002 Reading SD

Printed 1/29/2020 11:56:42 AM

REVISED SUBMISSION

General Fund (10)				
2140 Psychological Services	Elementary	Secondary	Federal	Total
100 Personnel Services – Salaries				
100 Personnel Services – Salaries	33,657.00	33,657.00	862,138.10	929,452.10
Total Personnel Services – Salaries	\$33,657.00	\$33,657.00	\$862,138.10	\$929,452.10
200 Personnel Services – Employee Benefits				
210 Group Insurance – Contracted Provider			205,500.00	205,500.00
220 Social Security Contributions	2,574.75	2,574.77	64,838.08	69,987.60
230 PSERS Retirement Contributions	100,178.99	61,924.34	140,179.21	302,282.54
260 Workers' Compensation	370.24	370.24	9,483.81	10,224.29
Total Personnel Services – Employee Benefits	\$103,123.98	\$64,869.35	\$420,001.10	\$587,994.43
300 Purchased Professional and Technical Services				
322 Professional Educational Services – Ius	318,485.59	275,356.17		593,841.76
330 Other Professional Services	36,310.30	36,310.30		72,620.60
Total Purchased Professional and Technical Services	\$354,795.89	\$311,666.47		\$666,462.36
500 Other Purchased Services				
580 Travel	6,589.33	6,589.33		13,178.66
Total Other Purchased Services	\$6,589.33	\$6,589.33		\$13,178.66
600 Supplies				
610 General Supplies	17,541.84	17,541.85		35,083.69
Total Supplies	\$17,541.84	\$17,541.85		\$35,083.69
Total 2140 Psychological Services	\$515,708.04	\$434,324.00	\$1,282,139.20	\$2,232,171.24

LEA : 114067002 Reading SD

Printed 1/29/2020 11:56:42 AM

REVISED SUBMISSION

General Fund (10)

2160 Social Work Services	<u>Elementary</u>	<u>Secondary</u>	<u>Federal</u>	<u>Total</u>
100 <u>Personnel Services – Salaries</u>				
100 Personnel Services – Salaries				290,854.45
Total Personnel Services – Salaries				\$290,854.45
200 <u>Personnel Services – Employee Benefits</u>				
210 Group Insurance – Contracted Provider				78,000.00
220 Social Security Contributions				21,631.26
230 PSERS Retirement Contributions				94,515.18
260 Workers' Compensation				2,568.38
Total Personnel Services – Employee Benefits				\$196,714.82
600 <u>Supplies</u>				
610 General Supplies			870.00	870.00
Total Supplies			\$870.00	\$870.00
Total 2160 Social Work Services			\$870.00	\$488,439.27

LEA : 114067002 Reading SD

Printed 1/29/2020 11:56:42 AM

REVISED SUBMISSION

General Fund (10)				
2170 Student Accounting Services	<u>Elementary</u>	<u>Secondary</u>	<u>Federal</u>	<u>Total</u>
100 <u>Personnel Services – Salaries</u>				
100 Personnel Services – Salaries				243,628.90
Total Personnel Services – Salaries				\$243,628.90
200 <u>Personnel Services – Employee Benefits</u>				
210 Group Insurance – Contracted Provider				81,500.00
220 Social Security Contributions				18,084.95
230 PSERS Retirement Contributions				78,360.48
260 Workers' Compensation				2,667.60
Total Personnel Services – Employee Benefits				\$180,613.03
300 <u>Purchased Professional and Technical Services</u>				
324 Professional Educational Services – Employee Training and Development Services				590.00
Total Purchased Professional and Technical Services				\$590.00
500 <u>Other Purchased Services</u>				
580 Travel				1,068.00
Total Other Purchased Services				\$1,068.00
Total 2170 Student Accounting Services				\$425,899.93

LEA : 114067002 Reading SD

Printed 1/29/2020 11:56:42 AM

REVISED SUBMISSION

General Fund (10)				
2190 Other Student Services	<u>Elementary</u>	<u>Secondary</u>	<u>Federal</u>	<u>Total</u>
100 <u>Personnel Services – Salaries</u>				
100 Personnel Services – Salaries			63,611.75	63,611.75
Total Personnel Services – Salaries			\$63,611.75	\$63,611.75
200 <u>Personnel Services – Employee Benefits</u>				
220 Social Security Contributions			4,859.89	4,859.89
230 PSERS Retirement Contributions		10,310.75	10,359.12	20,669.87
260 Workers’ Compensation			699.85	699.85
Total Personnel Services – Employee Benefits		\$10,310.75	\$15,918.86	\$26,229.61
300 <u>Purchased Professional and Technical Services</u>				
329 Professional Educational Services – Other			22,368.15	22,368.15
Total Purchased Professional and Technical Services			\$22,368.15	\$22,368.15
Total 2190 Other Student Services		\$10,310.75	\$101,898.76	\$112,209.51

LEA : 114067002 Reading SD

Printed 1/29/2020 11:56:42 AM

REVISED SUBMISSION

General Fund (10)				
2200 Support Services – Instructional Staff	<u>Elementary</u>	<u>Secondary</u>	<u>Federal</u>	<u>Total</u>
100 <u>Personnel Services – Salaries</u>				
100 Personnel Services – Salaries	993,354.85	479,936.21	561,321.41	2,034,612.47
Total Personnel Services – Salaries	\$993,354.85	\$479,936.21	\$561,321.41	\$2,034,612.47
200 <u>Personnel Services – Employee Benefits</u>				
210 Group Insurance – Contracted Provider	249,200.00	109,900.00	90,000.00	449,100.00
220 Social Security Contributions	74,719.54	36,138.02	42,358.50	153,216.06
230 PSERS Retirement Contributions	366,754.24	202,922.12	91,173.99	660,850.35
240 Tuition Reimbursement	136,449.00	142,740.00		279,189.00
250 Unemployment Compensation	1,941.50	1,941.50		3,883.00
260 Workers' Compensation	10,927.23	5,276.28	6,173.59	22,377.10
Total Personnel Services – Employee Benefits	\$839,991.51	\$498,917.92	\$229,706.08	\$1,568,615.51
300 <u>Purchased Professional and Technical Services</u>				
322 Professional Educational Services – Ius	43,629.50	44,129.50	4,075.00	91,834.00
324 Professional Educational Services – Employee Training and Development Services	14,335.11	14,450.12	647,637.72	676,422.95
329 Professional Educational Services – Other			28,523.21	28,523.21
330 Other Professional Services			160,201.50	160,201.50
Total Purchased Professional and Technical Services	\$57,964.61	\$58,579.62	\$840,437.43	\$956,981.66
400 <u>Purchased Property Services</u>				
430 Repairs and Maintenance Services	425.82	187.50		613.32
Total Purchased Property Services	\$425.82	\$187.50		\$613.32
500 <u>Other Purchased Services</u>				
550 Printing and Binding	1,495.00			1,495.00
580 Travel			21,494.76	21,494.76
595 IU Payments By Withholding	5,594.17	1,316.23		6,910.40
Total Other Purchased Services	\$7,089.17	\$1,316.23	\$21,494.76	\$29,900.16
600 <u>Supplies</u>				
610 General Supplies	22,865.37	19,927.35	46,368.40	89,161.12
630 Food	742.50	742.50		1,485.00
640 Books and Periodicals	26,932.53	19,421.12	29,562.12	75,915.77
Total Supplies	\$50,540.40	\$40,090.97	\$75,930.52	\$166,561.89
800 <u>Other Objects</u>				
810 Dues and Fees	1,085.00			1,085.00
Total Other Objects	\$1,085.00			\$1,085.00
Total 2200 Support Services – Instructional Staff	\$1,950,451.36	\$1,079,028.45	\$1,728,890.20	\$4,758,370.01

LEA : 114067002 Reading SD

Printed 1/29/2020 11:56:42 AM

REVISED SUBMISSION

General Fund (10)

2210 Supervision of Educational Media Services

	<u>Elementary</u>	<u>Secondary</u>	<u>Federal</u>	<u>Total</u>
600 <u>Supplies</u>				
610 General Supplies	2,920.79	50.00		2,970.79
Total Supplies	\$2,920.79	\$50.00		\$2,970.79
Total 2210 Supervision of Educational Media Services	\$2,920.79	\$50.00		\$2,970.79

LEA : 114067002 Reading SD

Printed 1/29/2020 11:56:42 AM

REVISED SUBMISSION

General Fund (10)

2211 Supervision of Educational Media Services – Head of Component

	<u>Elementary</u>	<u>Secondary</u>	<u>Federal</u>	<u>Total</u>
600 <u>Supplies</u>				
610 General Supplies	1,701.08			1,701.08
Total Supplies	\$1,701.08			\$1,701.08
Total 2211 Supervision of Educational Media Services – Head of Component	\$1,701.08			\$1,701.08

LEA : 114067002 Reading SD

Printed 1/29/2020 11:56:42 AM

REVISED SUBMISSION

General Fund (10)

2219 Supervision of Educational Media Services – All Other Supervision

	<u>Elementary</u>	<u>Secondary</u>	<u>Federal</u>	<u>Total</u>
600 <u>Supplies</u>				
610 General Supplies	1,219.71	50.00		1,269.71
Total Supplies	\$1,219.71	\$50.00		\$1,269.71
Total 2219 Supervision of Educational Media Services – All Other Supervision	\$1,219.71	\$50.00		\$1,269.71

LEA : 114067002 Reading SD

Printed 1/29/2020 11:56:42 AM

REVISED SUBMISSION

General Fund (10)				
2220 Technology Support Services	<u>Elementary</u>	<u>Secondary</u>	<u>Federal</u>	<u>Total</u>
100 <u>Personnel Services – Salaries</u>				
100 Personnel Services – Salaries		41,758.59		41,758.59
Total Personnel Services – Salaries		\$41,758.59		\$41,758.59
200 <u>Personnel Services – Employee Benefits</u>				
210 Group Insurance – Contracted Provider		17,600.00		17,600.00
220 Social Security Contributions		3,123.98		3,123.98
230 PSERS Retirement Contributions		13,600.60		13,600.60
260 Workers' Compensation		459.42		459.42
Total Personnel Services – Employee Benefits		\$34,784.00		\$34,784.00
300 <u>Purchased Professional and Technical Services</u>				
330 Other Professional Services			137,308.50	137,308.50
Total Purchased Professional and Technical Services			\$137,308.50	\$137,308.50
400 <u>Purchased Property Services</u>				
430 Repairs and Maintenance Services	309.89	187.50		497.39
Total Purchased Property Services	\$309.89	\$187.50		\$497.39
600 <u>Supplies</u>				
610 General Supplies	17,290.94	18,191.73		35,482.67
Total Supplies	\$17,290.94	\$18,191.73		\$35,482.67
Total 2220 Technology Support Services	\$17,600.83	\$94,921.82	\$137,308.50	\$249,831.15

LEA : 114067002 Reading SD

Printed 1/29/2020 11:56:42 AM

REVISED SUBMISSION

General Fund (10)

2240 Computer-Assisted Instruction Support Services

	<u>Elementary</u>	<u>Secondary</u>	<u>Federal</u>	<u>Total</u>
600 <u>Supplies</u>				
610 General Supplies	1,793.60			1,793.60
Total Supplies	\$1,793.60			\$1,793.60
Total 2240 Computer-Assisted Instruction Support Services	\$1,793.60			\$1,793.60

LEA : 114067002 Reading SD

Printed 1/29/2020 11:56:42 AM

REVISED SUBMISSION

General Fund (10)					
2250 School Library Services		Elementary	Secondary	Federal	Total
100 Personnel Services – Salaries					
100 Personnel Services – Salaries		742,168.95	297,312.74		1,039,481.69
Total Personnel Services – Salaries		\$742,168.95	\$297,312.74		\$1,039,481.69
200 Personnel Services – Employee Benefits					
210 Group Insurance – Contracted Provider		177,000.00	72,000.00		249,000.00
220 Social Security Contributions		55,829.07	22,337.52		78,166.59
230 PSERS Retirement Contributions		241,585.66	96,572.76		338,158.42
260 Workers' Compensation		8,164.20	3,270.29		11,434.49
Total Personnel Services – Employee Benefits		\$482,578.93	\$194,180.57		\$676,759.50
400 Purchased Property Services					
430 Repairs and Maintenance Services		115.93			115.93
Total Purchased Property Services		\$115.93			\$115.93
600 Supplies					
610 General Supplies		115.93	1,134.81		1,250.74
640 Books and Periodicals		13,246.61	5,735.21		18,981.82
Total Supplies		\$13,362.54	\$6,870.02		\$20,232.56
Total 2250 School Library Services		\$1,238,226.35	\$498,363.33		\$1,736,589.68

LEA : 114067002 Reading SD

Printed 1/29/2020 11:56:42 AM

REVISED SUBMISSION

General Fund (10)				
2260 Instruction and Curriculum Development Services	<u>Elementary</u>	<u>Secondary</u>	<u>Federal</u>	<u>Total</u>
100 <u>Personnel Services – Salaries</u>				
100 Personnel Services – Salaries	243,625.90	123,719.88		367,345.78
Total Personnel Services – Salaries	\$243,625.90	\$123,719.88		\$367,345.78
200 <u>Personnel Services – Employee Benefits</u>				
210 Group Insurance – Contracted Provider	72,200.00	20,300.00		92,500.00
220 Social Security Contributions	18,312.02	9,364.77		27,676.79
230 PSERS Retirement Contributions	78,651.10	40,151.28		118,802.38
250 Unemployment Compensation	1,941.50	1,941.50		3,883.00
260 Workers' Compensation	2,679.87	1,360.94		4,040.81
Total Personnel Services – Employee Benefits	\$173,784.49	\$73,118.49		\$246,902.98
300 <u>Purchased Professional and Technical Services</u>				
322 Professional Educational Services – Ius	43,629.50	44,129.50		87,759.00
Total Purchased Professional and Technical Services	\$43,629.50	\$44,129.50		\$87,759.00
500 <u>Other Purchased Services</u>				
550 Printing and Binding	1,495.00			1,495.00
595 IU Payments By Withholding	5,594.17	1,316.23		6,910.40
Total Other Purchased Services	\$7,089.17	\$1,316.23		\$8,405.40
600 <u>Supplies</u>				
610 General Supplies	744.11	550.81		1,294.92
Total Supplies	\$744.11	\$550.81		\$1,294.92
Total 2260 Instruction and Curriculum Development Services	\$468,873.17	\$242,834.91		\$711,708.08

LEA : 114067002 Reading SD

Printed 1/29/2020 11:56:42 AM

REVISED SUBMISSION

General Fund (10)				
2270 Instructional Staff Professional Development Services	Elementary	Secondary	Federal	Total
100 <u>Personnel Services – Salaries</u>				
100 Personnel Services – Salaries	7,560.00	17,145.00	561,321.41	586,026.41
Total Personnel Services – Salaries	\$7,560.00	\$17,145.00	\$561,321.41	\$586,026.41
200 <u>Personnel Services – Employee Benefits</u>				
210 Group Insurance – Contracted Provider			90,000.00	90,000.00
220 Social Security Contributions	578.45	1,311.75	42,358.50	44,248.70
230 PSERS Retirement Contributions	46,517.48	52,597.48	91,173.99	190,288.95
240 Tuition Reimbursement	136,449.00	142,740.00		279,189.00
260 Workers' Compensation	83.16	185.63	6,173.59	6,442.38
Total Personnel Services – Employee Benefits	\$183,628.09	\$196,834.86	\$229,706.08	\$610,169.03
300 <u>Purchased Professional and Technical Services</u>				
322 Professional Educational Services – lus			4,075.00	4,075.00
324 Professional Educational Services – Employee Training and Development Services	14,335.11	14,450.12	647,637.72	676,422.95
Total Purchased Professional and Technical Services	\$14,335.11	\$14,450.12	\$651,712.72	\$680,497.95
500 <u>Other Purchased Services</u>				
580 Travel			21,494.76	21,494.76
Total Other Purchased Services			\$21,494.76	\$21,494.76
600 <u>Supplies</u>				
610 General Supplies			46,368.40	46,368.40
630 Food	742.50	742.50		1,485.00
640 Books and Periodicals	13,685.92	13,685.91	29,562.12	56,933.95
Total Supplies	\$14,428.42	\$14,428.41	\$75,930.52	\$104,787.35
800 <u>Other Objects</u>				
810 Dues and Fees	1,085.00			1,085.00
Total Other Objects	\$1,085.00			\$1,085.00
Total 2270 Instructional Staff Professional Development Services	\$221,036.62	\$242,858.39	\$1,540,165.49	\$2,004,060.50

LEA : 114067002 Reading SD

Printed 1/29/2020 11:56:42 AM

REVISED SUBMISSION

General Fund (10)

2280 Nonpublic Support Services

	<u>Elementary</u>	<u>Secondary</u>	<u>Federal</u>	<u>Total</u>
300 <u>Purchased Professional and Technical Services</u>				
329 Professional Educational Services – Other			28,523.21	28,523.21
330 Other Professional Services			22,893.00	22,893.00
Total Purchased Professional and Technical Services			\$51,416.21	\$51,416.21
Total 2280 Nonpublic Support Services			\$51,416.21	\$51,416.21

LEA : 114067002 Reading SD

Printed 1/29/2020 11:56:42 AM

REVISED SUBMISSION

General Fund (10)				
2300 Support Services – Administration	Elementary	Secondary	Federal	Total
100 Personnel Services – Salaries				
100 Personnel Services – Salaries	3,066,891.41	2,884,409.94		6,834,275.02
Total Personnel Services – Salaries	\$3,066,891.41	\$2,884,409.94		\$6,834,275.02
200 Personnel Services – Employee Benefits				
210 Group Insurance – Contracted Provider	594,292.60	603,515.14		1,374,893.82
220 Social Security Contributions	229,459.04	229,095.11		518,997.67
230 PSERS Retirement Contributions	985,907.28	986,839.67		2,254,527.99
250 Unemployment Compensation		2,035.47		2,035.47
260 Workers' Compensation	40,803.20	40,631.52		91,202.50
280 Other Post-Employment Benefits (OPEB)				6,589,661.64
299 All Other Employee Benefits	9,731.00	(26,095.05)		8,050.96
Total Personnel Services – Employee Benefits	\$1,860,193.12	\$1,836,021.86		\$10,839,370.05
300 Purchased Professional and Technical Services				
324 Professional Educational Services – Employee Training and Development Services				5,880.00
330 Other Professional Services				1,226,874.39
390 Other Purchased Professional and Technical Services				17,596.00
Total Purchased Professional and Technical Services				\$1,250,350.39
400 Purchased Property Services				
440 Rentals	119,856.07	121,856.07		241,712.14
Total Purchased Property Services	\$119,856.07	\$121,856.07		\$241,712.14
500 Other Purchased Services				
520 Insurance – General				103,772.00
530 Communications	35,740.01	49,890.23		85,630.24
549 Other Advertising/Public Relations				599.70
550 Printing and Binding	366.00	6,709.89		11,412.66
580 Travel	81.67	393.82		21,383.14
599 Other Miscellaneous Purchased Services				794.70
Total Other Purchased Services	\$36,187.68	\$56,993.94		\$223,592.44
600 Supplies				
610 General Supplies	10,275.72	10,967.54		68,657.97
630 Food				12,926.97
640 Books and Periodicals	652.90			1,893.01
650 Supplies & Fees – Technology Related				108.00
Total Supplies	\$10,928.62	\$10,967.54		\$83,585.95
800 Other Objects				
810 Dues and Fees	228.00			44,792.64
820 Claims and Judgments Against the LEA				440,000.00
890 Miscellaneous Expenditures				3,183.90
Total Other Objects	\$228.00			\$487,976.54
Total 2300 Support Services – Administration	\$5,094,284.90	\$4,910,249.35		\$19,960,862.53

LEA : 114067002 Reading SD

Printed 1/29/2020 11:56:42 AM

REVISED SUBMISSION

General Fund (10)				
2310 Board Services				
	Elementary	Secondary	Federal	Total
100 Personnel Services – Salaries				
100	Personnel Services – Salaries			15,000.00
Total Personnel Services – Salaries				\$15,000.00
200 Personnel Services – Employee Benefits				
220	Social Security Contributions			1,144.83
230	PSERS Retirement Contributions			4,896.20
260	Workers’ Compensation			165.00
Total Personnel Services – Employee Benefits				\$6,206.03
300 Purchased Professional and Technical Services				
324	Professional Educational Services – Employee Training and Development Services			4,695.00
330	Other Professional Services			157,893.31
Total Purchased Professional and Technical Services				\$162,588.31
500 Other Purchased Services				
520	Insurance – General			103,772.00
549	Other Advertising/Public Relations			599.70
580	Travel			7,933.70
Total Other Purchased Services				\$112,305.40
600 Supplies				
610	General Supplies			177.75
630	Food			2,459.47
Total Supplies				\$2,637.22
800 Other Objects				
810	Dues and Fees			38,900.62
820	Claims and Judgments Against the LEA			440,000.00
890	Miscellaneous Expenditures			2,700.00
Total Other Objects				\$481,600.62
Total 2310 Board Services				\$780,337.58

LEA : 114067002 Reading SD

Printed 1/29/2020 11:56:42 AM

REVISED SUBMISSION

General Fund (10)

2330 Tax Assessment and Collection Services	<u>Elementary</u>	<u>Secondary</u>	<u>Federal</u>	<u>Total</u>
100 <u>Personnel Services – Salaries</u>				
100 Personnel Services – Salaries				87,506.18
Total Personnel Services – Salaries				\$87,506.18
200 <u>Personnel Services – Employee Benefits</u>				
210 Group Insurance – Contracted Provider				37,100.00
220 Social Security Contributions				6,416.08
230 PSERS Retirement Contributions				28,125.74
260 Workers' Compensation				962.49
Total Personnel Services – Employee Benefits				\$72,604.31
600 <u>Supplies</u>				
610 General Supplies				40,764.35
Total Supplies				\$40,764.35
Total 2330 Tax Assessment and Collection Services				\$200,874.84

LEA : 114067002 Reading SD

Printed 1/29/2020 11:56:42 AM

REVISED SUBMISSION

General Fund (10)

2340 Staff Relations and Negotiations Services	<u>Elementary</u>	<u>Secondary</u>	<u>Federal</u>	<u>Total</u>
100 <u>Personnel Services – Salaries</u>				
100 Personnel Services – Salaries				4,647.26
Total Personnel Services – Salaries				\$4,647.26
200 <u>Personnel Services – Employee Benefits</u>				
220 Social Security Contributions				349.73
230 PSERS Retirement Contributions				1,511.82
260 Workers’ Compensation				51.23
280 Other Post-Employment Benefits (OPEB)				6,589,661.64
299 All Other Employee Benefits				17,500.00
Total Personnel Services – Employee Benefits				\$6,609,074.42
300 <u>Purchased Professional and Technical Services</u>				
330 Other Professional Services				(1,080.60)
390 Other Purchased Professional and Technical Services				17,596.00
Total Purchased Professional and Technical Services				\$16,515.40
Total 2340 Staff Relations and Negotiations Services				\$6,630,237.08

LEA : 114067002 Reading SD

Printed 1/29/2020 11:56:42 AM

REVISED SUBMISSION

General Fund (10)				
2350 Legal and Accounting Services	<u>Elementary</u>	<u>Secondary</u>	<u>Federal</u>	<u>Total</u>
300 <u>Purchased Professional and Technical Services</u>				
330 Other Professional Services				1,005,994.84
Total Purchased Professional and Technical Services				\$1,005,994.84
Total 2350 Legal and Accounting Services				\$1,005,994.84

LEA : 114067002 Reading SD

Printed 1/29/2020 11:56:42 AM

REVISED SUBMISSION

General Fund (10)				
2360 Office of the Superintendent / Executive Director Services	<u>Elementary</u>	<u>Secondary</u>	<u>Federal</u>	<u>Total</u>
100 <u>Personnel Services – Salaries</u>				
100 Personnel Services – Salaries				556,088.16
Total Personnel Services – Salaries				\$556,088.16
200 <u>Personnel Services – Employee Benefits</u>				
210 Group Insurance – Contracted Provider				62,786.08
220 Social Security Contributions				36,150.20
230 PSERS Retirement Contributions				175,937.92
260 Workers' Compensation				6,172.07
299 All Other Employee Benefits				6,915.01
Total Personnel Services – Employee Benefits				\$287,961.28
300 <u>Purchased Professional and Technical Services</u>				
324 Professional Educational Services – Employee Training and Development Services				1,185.00
330 Other Professional Services				64,066.84
Total Purchased Professional and Technical Services				\$65,251.84
500 <u>Other Purchased Services</u>				
530 Communications	35,690.01	35,690.01		71,380.02
550 Printing and Binding				4,336.77
580 Travel				12,883.20
599 Other Miscellaneous Purchased Services				794.70
Total Other Purchased Services	\$35,690.01	\$35,690.01		\$89,394.69
600 <u>Supplies</u>				
610 General Supplies				5,427.61
630 Food				10,467.50
640 Books and Periodicals				1,091.11
Total Supplies				\$16,986.22
800 <u>Other Objects</u>				
810 Dues and Fees				5,430.00
890 Miscellaneous Expenditures				483.90
Total Other Objects				\$5,913.90
Total 2360 Office of the Superintendent / Executive Director Services	\$35,690.01	\$35,690.01		\$1,021,596.09

LEA : 114067002 Reading SD

Printed 1/29/2020 11:56:42 AM

REVISED SUBMISSION

General Fund (10)

2370 Community Relations Services	<u>Elementary</u>	<u>Secondary</u>	<u>Federal</u>	<u>Total</u>
500 <u>Other Purchased Services</u>				
580 Travel				90.75
Total Other Purchased Services				\$90.75
600 <u>Supplies</u>				
610 General Supplies				1,045.00
Total Supplies				\$1,045.00
Total 2370 Community Relations Services				\$1,135.75

LEA : 114067002 Reading SD

Printed 1/29/2020 11:56:42 AM

REVISED SUBMISSION

General Fund (10)				
2380 Office of the Principal Services	Elementary	Secondary	Federal	Total
100 <u>Personnel Services – Salaries</u>				
100 Personnel Services – Salaries	3,066,891.41	2,884,409.94		5,951,301.35
Total Personnel Services – Salaries	\$3,066,891.41	\$2,884,409.94		\$5,951,301.35
200 <u>Personnel Services – Employee Benefits</u>				
210 Group Insurance – Contracted Provider	594,292.60	603,515.14		1,197,807.74
220 Social Security Contributions	229,459.04	229,095.11		458,554.15
230 PSERS Retirement Contributions	985,907.28	986,839.67		1,972,746.95
250 Unemployment Compensation		2,035.47		2,035.47
260 Workers' Compensation	40,803.20	40,631.52		81,434.72
299 All Other Employee Benefits	9,731.00	(26,095.05)		(16,364.05)
Total Personnel Services – Employee Benefits	\$1,860,193.12	\$1,836,021.86		\$3,696,214.98
400 <u>Purchased Property Services</u>				
440 Rentals	119,856.07	121,856.07		241,712.14
Total Purchased Property Services	\$119,856.07	\$121,856.07		\$241,712.14
500 <u>Other Purchased Services</u>				
530 Communications	50.00	14,200.22		14,250.22
550 Printing and Binding	366.00	6,709.89		7,075.89
580 Travel	81.67	393.82		475.49
Total Other Purchased Services	\$497.67	\$21,303.93		\$21,801.60
600 <u>Supplies</u>				
610 General Supplies	10,275.72	10,967.54		21,243.26
640 Books and Periodicals	652.90			652.90
Total Supplies	\$10,928.62	\$10,967.54		\$21,896.16
800 <u>Other Objects</u>				
810 Dues and Fees	228.00			228.00
Total Other Objects	\$228.00			\$228.00
Total 2380 Office of the Principal Services	\$5,058,594.89	\$4,874,559.34		\$9,933,154.23

LEA : 114067002 Reading SD

Printed 1/29/2020 11:56:42 AM

REVISED SUBMISSION

General Fund (10)

2390 Other Administration Services	<u>Elementary</u>	<u>Secondary</u>	<u>Federal</u>	<u>Total</u>
100 <u>Personnel Services – Salaries</u>				
100 Personnel Services – Salaries				219,732.07
Total Personnel Services – Salaries				\$219,732.07
200 <u>Personnel Services – Employee Benefits</u>				
210 Group Insurance – Contracted Provider				77,200.00
220 Social Security Contributions				16,382.68
230 PSERS Retirement Contributions				71,309.36
260 Workers' Compensation				2,416.99
Total Personnel Services – Employee Benefits				\$167,309.03
600 <u>Supplies</u>				
640 Books and Periodicals				149.00
650 Supplies & Fees – Technology Related				108.00
Total Supplies				\$257.00
800 <u>Other Objects</u>				
810 Dues and Fees				234.02
Total Other Objects				\$234.02
Total 2390 Other Administration Services				\$387,532.12

LEA : 114067002 Reading SD

Printed 1/29/2020 11:56:42 AM

REVISED SUBMISSION

General Fund (10)				
2400 Support Services – Pupil Health	<u>Elementary</u>	<u>Secondary</u>	<u>Federal</u>	<u>Total</u>
100 <u>Personnel Services – Salaries</u>				
100 Personnel Services – Salaries				1,596,834.65
Total Personnel Services – Salaries				\$1,596,834.65
200 <u>Personnel Services – Employee Benefits</u>				
210 Group Insurance – Contracted Provider				427,100.00
220 Social Security Contributions				119,325.41
230 PSERS Retirement Contributions				519,622.52
260 Workers' Compensation				17,566.28
Total Personnel Services – Employee Benefits				\$1,083,614.21
300 <u>Purchased Professional and Technical Services</u>				
324 Professional Educational Services – Employee Training and Development Services				1,580.00
330 Other Professional Services			801,079.07	807,076.69
Total Purchased Professional and Technical Services			\$801,079.07	\$808,656.69
500 <u>Other Purchased Services</u>				
580 Travel				1,374.55
Total Other Purchased Services				\$1,374.55
600 <u>Supplies</u>				
610 General Supplies				54,598.42
640 Books and Periodicals				190.31
Total Supplies				\$54,788.73
Total 2400 Support Services – Pupil Health			\$801,079.07	\$3,545,268.83

LEA : 114067002 Reading SD

Printed 1/29/2020 11:56:42 AM

REVISED SUBMISSION

General Fund (10)

2410 Supervision of Health Services	<u>Elementary</u>	<u>Secondary</u>	<u>Federal</u>	<u>Total</u>
100 <u>Personnel Services – Salaries</u>				
100 Personnel Services – Salaries				107,082.28
Total Personnel Services – Salaries				\$107,082.28
200 <u>Personnel Services – Employee Benefits</u>				
210 Group Insurance – Contracted Provider				17,600.00
220 Social Security Contributions				8,102.05
230 PSERS Retirement Contributions				34,610.68
260 Workers' Compensation				1,177.94
Total Personnel Services – Employee Benefits				\$61,490.67
600 <u>Supplies</u>				
610 General Supplies				203.18
Total Supplies				\$203.18
Total 2410 Supervision of Health Services				\$168,776.13

LEA : 114067002 Reading SD

Printed 1/29/2020 11:56:42 AM

REVISED SUBMISSION

General Fund (10)

2411 Supervision of Health Services – Head of Component	<u>Elementary</u>	<u>Secondary</u>	<u>Federal</u>	<u>Total</u>
100 <u>Personnel Services – Salaries</u>				
100 Personnel Services – Salaries				107,082.28
Total Personnel Services – Salaries				\$107,082.28
200 <u>Personnel Services – Employee Benefits</u>				
210 Group Insurance – Contracted Provider				17,600.00
220 Social Security Contributions				8,102.05
230 PSERS Retirement Contributions				34,610.68
260 Workers' Compensation				1,177.94
Total Personnel Services – Employee Benefits				\$61,490.67
Total 2411 Supervision of Health Services – Head of Component				\$168,572.95

LEA : 114067002 Reading SD

Printed 1/29/2020 11:56:42 AM

REVISED SUBMISSION

General Fund (10)

2419 Supervision of Health Services – All Other Supervision

Elementary

Secondary

Federal

Total

600 Supplies

610 General Supplies

203.18

Total Supplies					\$203.18
Total 2419 Supervision of Health Services – All Other Supervision					\$203.18

LEA : 114067002 Reading SD

Printed 1/29/2020 11:56:42 AM

REVISED SUBMISSION

General Fund (10)

2420 Medical Services

<u>Elementary</u>	<u>Secondary</u>	<u>Federal</u>	<u>Total</u>
-------------------	------------------	----------------	--------------

300 Purchased Professional and Technical Services

330 Other Professional Services		632,050.71	632,050.71
---------------------------------	--	------------	------------

Total Purchased Professional and Technical Services		\$632,050.71	\$632,050.71
--	--	---------------------	---------------------

Total 2420 Medical Services		\$632,050.71	\$632,050.71
------------------------------------	--	---------------------	---------------------

LEA : 114067002 Reading SD

Printed 1/29/2020 11:56:42 AM

REVISED SUBMISSION

General Fund (10)

2430 Dental Services	<u>Elementary</u>	<u>Secondary</u>	<u>Federal</u>	<u>Total</u>
100 <u>Personnel Services – Salaries</u>				
100 Personnel Services – Salaries				145,744.04
Total Personnel Services – Salaries				\$145,744.04
200 <u>Personnel Services – Employee Benefits</u>				
210 Group Insurance – Contracted Provider				34,500.00
220 Social Security Contributions				11,000.12
230 PSERS Retirement Contributions				47,468.72
260 Workers' Compensation				1,603.16
Total Personnel Services – Employee Benefits				\$94,572.00
600 <u>Supplies</u>				
610 General Supplies				7,756.62
Total Supplies				\$7,756.62
Total 2430 Dental Services				\$248,072.66

LEA : 114067002 Reading SD

Printed 1/29/2020 11:56:42 AM

REVISED SUBMISSION

General Fund (10)				
2440 Nursing Services	<u>Elementary</u>	<u>Secondary</u>	<u>Federal</u>	<u>Total</u>
100 <u>Personnel Services – Salaries</u>				
100 Personnel Services – Salaries				1,344,008.33
Total Personnel Services – Salaries				\$1,344,008.33
200 <u>Personnel Services – Employee Benefits</u>				
210 Group Insurance – Contracted Provider				375,000.00
220 Social Security Contributions				100,223.24
230 PSERS Retirement Contributions				437,543.12
260 Workers' Compensation				14,785.18
Total Personnel Services – Employee Benefits				\$927,551.54
300 <u>Purchased Professional and Technical Services</u>				
324 Professional Educational Services – Employee Training and Development Services				1,580.00
330 Other Professional Services			169,028.36	175,025.98
Total Purchased Professional and Technical Services			\$169,028.36	\$176,605.98
500 <u>Other Purchased Services</u>				
580 Travel				1,374.55
Total Other Purchased Services				\$1,374.55
600 <u>Supplies</u>				
610 General Supplies				46,638.62
640 Books and Periodicals				190.31
Total Supplies				\$46,828.93
Total 2440 Nursing Services			\$169,028.36	\$2,496,369.33

LEA : 114067002 Reading SD

Printed 1/29/2020 11:56:42 AM

REVISED SUBMISSION

General Fund (10)				
2500 Support Services – Business	Elementary	Secondary	Federal	Total
100 <u>Personnel Services – Salaries</u>				
100 Personnel Services – Salaries				782,348.02
Total Personnel Services – Salaries				\$782,348.02
200 <u>Personnel Services – Employee Benefits</u>				
210 Group Insurance – Contracted Provider				222,900.00
220 Social Security Contributions				57,748.62
230 PSERS Retirement Contributions				255,735.45
250 Unemployment Compensation				1,035.88
260 Workers' Compensation				182,591.95
299 All Other Employee Benefits				10,478.97
Total Personnel Services – Employee Benefits				\$730,490.87
300 <u>Purchased Professional and Technical Services</u>				
310 Official / Administrative Services				35,698.81
324 Professional Educational Services – Employee Training and Development Services				4,207.15
330 Other Professional Services				73,053.60
390 Other Purchased Professional and Technical Services				3,775.68
Total Purchased Professional and Technical Services				\$116,735.24
400 <u>Purchased Property Services</u>				
410 Cleaning Services				4,122.11
440 Rentals				25,658.69
Total Purchased Property Services				\$29,780.80
500 <u>Other Purchased Services</u>				
520 Insurance – General				218.00
530 Communications				2,540.54
580 Travel				3,394.58
Total Other Purchased Services				\$6,153.12
600 <u>Supplies</u>				
610 General Supplies				32,995.47
640 Books and Periodicals				194.48
650 Supplies & Fees – Technology Related				7,235.00
Total Supplies				\$40,424.95
800 <u>Other Objects</u>				
810 Dues and Fees				90,350.48
890 Miscellaneous Expenditures				1,969.09
Total Other Objects				\$92,319.57
Total 2500 Support Services – Business				\$1,798,252.57

LEA : 114067002 Reading SD

Printed 1/29/2020 11:56:42 AM

REVISED SUBMISSION

General Fund (10)				
2510 Fiscal Services	Elementary	Secondary	Federal	Total
100 <u>Personnel Services – Salaries</u>				
100 Personnel Services – Salaries				682,823.05
Total Personnel Services – Salaries				\$682,823.05
200 <u>Personnel Services – Employee Benefits</u>				
210 Group Insurance – Contracted Provider				187,500.00
220 Social Security Contributions				50,324.39
230 PSERS Retirement Contributions				223,629.67
250 Unemployment Compensation				1,035.88
260 Workers' Compensation				181,497.13
299 All Other Employee Benefits				10,478.97
Total Personnel Services – Employee Benefits				\$654,466.04
300 <u>Purchased Professional and Technical Services</u>				
310 Official / Administrative Services				35,698.81
324 Professional Educational Services – Employee Training and Development Services				4,207.15
330 Other Professional Services				73,053.60
390 Other Purchased Professional and Technical Services				3,775.68
Total Purchased Professional and Technical Services				\$116,735.24
400 <u>Purchased Property Services</u>				
410 Cleaning Services				4,122.11
Total Purchased Property Services				\$4,122.11
500 <u>Other Purchased Services</u>				
520 Insurance – General				218.00
530 Communications				1,538.44
580 Travel				3,328.63
Total Other Purchased Services				\$5,085.07
600 <u>Supplies</u>				
610 General Supplies				9,885.18
640 Books and Periodicals				194.48
650 Supplies & Fees – Technology Related				7,235.00
Total Supplies				\$17,314.66
800 <u>Other Objects</u>				
810 Dues and Fees				90,350.48
890 Miscellaneous Expenditures				1,969.09
Total Other Objects				\$92,319.57
Total 2510 Fiscal Services				\$1,572,865.74

LEA : 114067002 Reading SD

Printed 1/29/2020 11:56:42 AM

REVISED SUBMISSION

General Fund (10)				
2511 Supervision of Fiscal Services - Head of Component	<u>Elementary</u>	<u>Secondary</u>	<u>Federal</u>	<u>Total</u>
100 <u>Personnel Services – Salaries</u>				
100 Personnel Services – Salaries				185,701.98
Total Personnel Services – Salaries				\$185,701.98
200 <u>Personnel Services – Employee Benefits</u>				
210 Group Insurance – Contracted Provider				35,200.00
220 Social Security Contributions				13,517.95
230 PSERS Retirement Contributions				60,372.06
260 Workers' Compensation				2,042.73
299 All Other Employee Benefits				10,478.97
Total Personnel Services – Employee Benefits				\$121,611.71
300 <u>Purchased Professional and Technical Services</u>				
324 Professional Educational Services – Employee Training and Development Services				1,314.55
Total Purchased Professional and Technical Services				\$1,314.55
500 <u>Other Purchased Services</u>				
580 Travel				1,438.87
Total Other Purchased Services				\$1,438.87
600 <u>Supplies</u>				
610 General Supplies				608.99
640 Books and Periodicals				194.48
Total Supplies				\$803.47
800 <u>Other Objects</u>				
810 Dues and Fees				980.00
Total Other Objects				\$980.00
Total 2511 Supervision of Fiscal Services - Head of Component				\$311,850.58

LEA : 114067002 Reading SD

Printed 1/29/2020 11:56:42 AM

REVISED SUBMISSION

General Fund (10)

2514 Payroll Services

Elementary Secondary Federal Total

100 <u>Personnel Services – Salaries</u>				
100 Personnel Services – Salaries				143,667.90
Total Personnel Services – Salaries				\$143,667.90
200 <u>Personnel Services – Employee Benefits</u>				
210 Group Insurance – Contracted Provider				53,200.00
220 Social Security Contributions				10,308.66
230 PSERS Retirement Contributions				46,532.70
250 Unemployment Compensation				1,035.88
260 Workers' Compensation				1,577.90
Total Personnel Services – Employee Benefits				\$112,655.14
300 <u>Purchased Professional and Technical Services</u>				
324 Professional Educational Services – Employee Training and Development Services				481.25
330 Other Professional Services				25,074.10
Total Purchased Professional and Technical Services				\$25,555.35
500 <u>Other Purchased Services</u>				
580 Travel				101.12
Total Other Purchased Services				\$101.12
Total 2514 Payroll Services				\$281,979.51

LEA : 114067002 Reading SD

Printed 1/29/2020 11:56:42 AM

REVISED SUBMISSION

General Fund (10)				
2515 Financial Accounting Services	Elementary	Secondary	Federal	Total
100 <u>Personnel Services – Salaries</u>				
100 Personnel Services – Salaries				228,515.88
Total Personnel Services – Salaries				\$228,515.88
200 <u>Personnel Services – Employee Benefits</u>				
210 Group Insurance – Contracted Provider				47,200.00
220 Social Security Contributions				17,161.35
230 PSERS Retirement Contributions				73,950.92
260 Workers' Compensation				176,505.65
Total Personnel Services – Employee Benefits				\$314,817.92
300 <u>Purchased Professional and Technical Services</u>				
310 Official / Administrative Services				35,698.81
324 Professional Educational Services – Employee Training and Development Services				2,411.35
330 Other Professional Services				47,979.50
390 Other Purchased Professional and Technical Services				3,775.68
Total Purchased Professional and Technical Services				\$89,865.34
400 <u>Purchased Property Services</u>				
410 Cleaning Services				4,122.11
Total Purchased Property Services				\$4,122.11
500 <u>Other Purchased Services</u>				
520 Insurance – General				218.00
530 Communications				1,538.44
580 Travel				1,788.64
Total Other Purchased Services				\$3,545.08
600 <u>Supplies</u>				
610 General Supplies				6,426.19
Total Supplies				\$6,426.19
800 <u>Other Objects</u>				
810 Dues and Fees				89,124.68
890 Miscellaneous Expenditures				1,969.09
Total Other Objects				\$91,093.77
Total 2515 Financial Accounting Services				\$738,386.29

LEA : 114067002 Reading SD

Printed 1/29/2020 11:56:42 AM

REVISED SUBMISSION

General Fund (10)				
2517 Property Accounting Services	<u>Elementary</u>	<u>Secondary</u>	<u>Federal</u>	<u>Total</u>
600 <u>Supplies</u>				
610 General Supplies				2,850.00
Total Supplies				\$2,850.00
Total 2517 Property Accounting Services				\$2,850.00

LEA : 114067002 Reading SD

Printed 1/29/2020 11:56:42 AM

REVISED SUBMISSION

General Fund (10)

2519 Other Fiscal Services	<u>Elementary</u>	<u>Secondary</u>	<u>Federal</u>	<u>Total</u>
100 <u>Personnel Services – Salaries</u>				
100 Personnel Services – Salaries				124,937.29
Total Personnel Services – Salaries				\$124,937.29
200 <u>Personnel Services – Employee Benefits</u>				
210 Group Insurance – Contracted Provider				51,900.00
220 Social Security Contributions				9,336.43
230 PSERS Retirement Contributions				42,773.99
260 Workers' Compensation				1,370.85
Total Personnel Services – Employee Benefits				\$105,381.27
600 <u>Supplies</u>				
650 Supplies & Fees – Technology Related				7,235.00
Total Supplies				\$7,235.00
800 <u>Other Objects</u>				
810 Dues and Fees				245.80
Total Other Objects				\$245.80
Total 2519 Other Fiscal Services				\$237,799.36

LEA : 114067002 Reading SD

Printed 1/29/2020 11:56:42 AM

REVISED SUBMISSION

General Fund (10)

2520 Purchasing Services	<u>Elementary</u>	<u>Secondary</u>	<u>Federal</u>	<u>Total</u>
100 <u>Personnel Services – Salaries</u>				
100 Personnel Services – Salaries				99,524.97
Total Personnel Services – Salaries				\$99,524.97
200 <u>Personnel Services – Employee Benefits</u>				
210 Group Insurance – Contracted Provider				35,400.00
220 Social Security Contributions				7,424.23
230 PSERS Retirement Contributions				32,105.78
260 Workers' Compensation				1,094.82
Total Personnel Services – Employee Benefits				\$76,024.83
500 <u>Other Purchased Services</u>				
580 Travel				65.95
Total Other Purchased Services				\$65.95
600 <u>Supplies</u>				
610 General Supplies				3,492.32
Total Supplies				\$3,492.32
Total 2520 Purchasing Services				\$179,108.07

LEA : 114067002 Reading SD

Printed 1/29/2020 11:56:42 AM

REVISED SUBMISSION

General Fund (10)

2530 Warehousing and Distributing Services	<u>Elementary</u>	<u>Secondary</u>	<u>Federal</u>	<u>Total</u>
400 <u>Purchased Property Services</u>				
440 Rentals				25,658.69
Total Purchased Property Services				\$25,658.69
500 <u>Other Purchased Services</u>				
530 Communications				1,002.10
Total Other Purchased Services				\$1,002.10
Total 2530 Warehousing and Distributing Services				\$26,660.79

LEA : 114067002 Reading SD

Printed 1/29/2020 11:56:42 AM

REVISED SUBMISSION

General Fund (10)				
2540 Printing, Publishing and Duplicating Services	<u>Elementary</u>	<u>Secondary</u>	<u>Federal</u>	<u>Total</u>
600 <u>Supplies</u>				
610 General Supplies				17,459.32
Total Supplies				\$17,459.32
Total 2540 Printing, Publishing and Duplicating Services				\$17,459.32

LEA : 114067002 Reading SD

Printed 1/29/2020 11:56:42 AM

REVISED SUBMISSION

General Fund (10)

2590 Other Support Services – Business

Elementary

Secondary

Federal

Total

600 Supplies

610 General Supplies

2,158.65

Total Supplies				\$2,158.65
Total 2590 Other Support Services – Business				\$2,158.65

LEA : 114067002 Reading SD

Printed 1/29/2020 11:56:42 AM

REVISED SUBMISSION

General Fund (10)				
2600 Operation and Maintenance of Plant Services	Elementary	Secondary	Federal	Total
100 <u>Personnel Services – Salaries</u>				
100 Personnel Services – Salaries				7,522,092.71
Total Personnel Services – Salaries				\$7,522,092.71
200 <u>Personnel Services – Employee Benefits</u>				
210 Group Insurance – Contracted Provider				2,340,956.53
220 Social Security Contributions				574,013.53
230 PSERS Retirement Contributions				2,475,727.24
250 Unemployment Compensation				22,392.54
260 Workers' Compensation				95,854.97
299 All Other Employee Benefits				(23,129.47)
Total Personnel Services – Employee Benefits				\$5,485,815.34
300 <u>Purchased Professional and Technical Services</u>				
324 Professional Educational Services – Employee Training and Development Services				6,120.00
330 Other Professional Services				434,004.11
340 Technical Services				48,497.64
390 Other Purchased Professional and Technical Services				9,778.40
Total Purchased Professional and Technical Services				\$498,400.15
400 <u>Purchased Property Services</u>				
410 Cleaning Services				172,720.80
420 Utility Services				790,909.89
430 Repairs and Maintenance Services				909,159.01
440 Rentals				265,851.38
460 Extermination Services				25,548.70
Total Purchased Property Services				\$2,164,189.78
500 <u>Other Purchased Services</u>				
521 Fire Insurance				29,454.00
522 Automotive Liability Insurance				71,737.00
529 Other Insurance				2,672.00
530 Communications				166,686.33
549 Other Advertising/Public Relations				4,839.30
580 Travel				193.16
Total Other Purchased Services				\$275,581.79
600 <u>Supplies</u>				
610 General Supplies	876,046.21	849,357.06		1,725,403.27
620 Energy				2,580,624.05
Total Supplies		\$876,046.21	\$849,357.06	\$4,306,027.32
700 <u>Property</u>				
752 Capital Equipment – Original and Additional				48,460.00
Total Property				\$48,460.00
800 <u>Other Objects</u>				
810 Dues and Fees				6,764.00

LEA : 114067002 Reading SD

Printed 1/29/2020 11:56:42 AM

REVISED SUBMISSION

General Fund (10)				
2600 Operation and Maintenance of Plant Services	<u>Elementary</u>	<u>Secondary</u>	<u>Federal</u>	<u>Total</u>
800 <u>Other Objects</u>				
890 Miscellaneous Expenditures				6,271.77
Total Other Objects				\$13,035.77
Total 2600 Operation and Maintenance of Plant Services	\$876,046.21	\$849,357.06		\$20,313,602.86

LEA : 114067002 Reading SD

Printed 1/29/2020 11:56:42 AM

REVISED SUBMISSION

General Fund (10)

2610 Supervision of Operation and Maintenance of Plant Services	<u>Elementary</u>	<u>Secondary</u>	<u>Federal</u>	<u>Total</u>
100 <u>Personnel Services – Salaries</u>				
100 Personnel Services – Salaries				350,510.25
Total Personnel Services – Salaries				\$350,510.25
200 <u>Personnel Services – Employee Benefits</u>				
210 Group Insurance – Contracted Provider				106,400.00
220 Social Security Contributions				26,214.46
230 PSERS Retirement Contributions				113,125.44
260 Workers' Compensation				3,735.05
Total Personnel Services – Employee Benefits				\$249,474.95
800 <u>Other Objects</u>				
810 Dues and Fees				300.00
Total Other Objects				\$300.00
Total 2610 Supervision of Operation and Maintenance of Plant Services				\$600,285.20

LEA : 114067002 Reading SD

Printed 1/29/2020 11:56:42 AM

REVISED SUBMISSION

General Fund (10)

2611 Supervision of Operation and Maintenance of Plant Services – Head of Component	<u>Elementary</u>	<u>Secondary</u>	<u>Federal</u>	<u>Total</u>
100 <u>Personnel Services – Salaries</u>				
100 Personnel Services – Salaries				86,868.86
Total Personnel Services – Salaries				\$86,868.86
200 <u>Personnel Services – Employee Benefits</u>				
210 Group Insurance – Contracted Provider				17,600.00
220 Social Security Contributions				6,574.99
230 PSERS Retirement Contributions				28,293.20
260 Workers' Compensation				955.51
Total Personnel Services – Employee Benefits				\$53,423.70
800 <u>Other Objects</u>				
810 Dues and Fees				300.00
Total Other Objects				\$300.00
Total 2611 Supervision of Operation and Maintenance of Plant Services – Head of Component				\$140,592.56

LEA : 114067002 Reading SD

Printed 1/29/2020 11:56:42 AM

REVISED SUBMISSION

General Fund (10)

2619 Supervision of Operation and Maintenance of Plant Services – All Other Supervision	<u>Elementary</u>	<u>Secondary</u>	<u>Federal</u>	<u>Total</u>
100 <u>Personnel Services – Salaries</u>				
100 Personnel Services – Salaries				263,641.39
Total Personnel Services – Salaries				\$263,641.39
200 <u>Personnel Services – Employee Benefits</u>				
210 Group Insurance – Contracted Provider				88,800.00
220 Social Security Contributions				19,639.47
230 PSERS Retirement Contributions				84,832.24
260 Workers' Compensation				2,779.54
Total Personnel Services – Employee Benefits				\$196,051.25
Total 2619 Supervision of Operation and Maintenance of Plant Services – All Other Supervision				\$459,692.64

LEA : 114067002 Reading SD

Printed 1/29/2020 11:56:42 AM

REVISED SUBMISSION

General Fund (10)				
2620 Operation of Buildings Services	Elementary	Secondary	Federal	Total
100 <u>Personnel Services – Salaries</u>				
100 Personnel Services – Salaries				6,241,493.33
Total Personnel Services – Salaries				\$6,241,493.33
200 <u>Personnel Services – Employee Benefits</u>				
210 Group Insurance – Contracted Provider				1,893,843.96
220 Social Security Contributions				472,727.24
230 PSERS Retirement Contributions				2,035,419.60
250 Unemployment Compensation				3,321.02
260 Workers' Compensation				81,172.49
299 All Other Employee Benefits				(7,155.85)
Total Personnel Services – Employee Benefits				\$4,479,328.46
300 <u>Purchased Professional and Technical Services</u>				
324 Professional Educational Services – Employee Training and Development Services				3,940.00
330 Other Professional Services				272,851.12
340 Technical Services				48,497.64
390 Other Purchased Professional and Technical Services				9,778.40
Total Purchased Professional and Technical Services				\$335,067.16
400 <u>Purchased Property Services</u>				
410 Cleaning Services				1,000.00
420 Utility Services				790,909.89
430 Repairs and Maintenance Services				892,531.37
440 Rentals				211,541.19
460 Extermination Services				25,548.70
Total Purchased Property Services				\$1,921,531.15
500 <u>Other Purchased Services</u>				
521 Fire Insurance				29,454.00
522 Automotive Liability Insurance				71,737.00
529 Other Insurance				2,672.00
530 Communications				166,686.33
549 Other Advertising/Public Relations				4,839.30
580 Travel				193.16
Total Other Purchased Services				\$275,581.79
600 <u>Supplies</u>				
610 General Supplies	843,190.02	816,500.87		1,659,690.89
620 Energy				2,580,624.05
Total Supplies	\$843,190.02	\$816,500.87		\$4,240,314.94
700 <u>Property</u>				
752 Capital Equipment – Original and Additional				48,460.00
Total Property				\$48,460.00
800 <u>Other Objects</u>				
810 Dues and Fees				6,464.00

LEA : 114067002 Reading SD

Printed 1/29/2020 11:56:42 AM

REVISED SUBMISSION

General Fund (10)

2620 Operation of Buildings Services	<u>Elementary</u>	<u>Secondary</u>	<u>Federal</u>	<u>Total</u>
800 <u>Other Objects</u>				
890 Miscellaneous Expenditures				6,271.77
Total Other Objects				\$12,735.77
Total 2620 Operation of Buildings Services	\$843,190.02	\$816,500.87		\$17,554,512.60

LEA : 114067002 Reading SD

Printed 1/29/2020 11:56:42 AM

REVISED SUBMISSION

General Fund (10)				
2650 Vehicle Operation and Maintenance Services (Other Than Student Transportation Vehicles)	<u>Elementary</u>	<u>Secondary</u>	<u>Federal</u>	<u>Total</u>
400 <u>Purchased Property Services</u>				
440 Rentals				54,310.19
Total Purchased Property Services				\$54,310.19
Total 2650 Vehicle Operation and Maintenance Services (Other Than Student Transportation Vehicles)				\$54,310.19

LEA : 114067002 Reading SD

Printed 1/29/2020 11:56:42 AM

REVISED SUBMISSION

General Fund (10)				
2660 Safety and Security Services	<u>Elementary</u>	<u>Secondary</u>	<u>Federal</u>	<u>Total</u>
100 <u>Personnel Services – Salaries</u>				
100 Personnel Services – Salaries				930,089.13
Total Personnel Services – Salaries				\$930,089.13
200 <u>Personnel Services – Employee Benefits</u>				
210 Group Insurance – Contracted Provider				340,712.57
220 Social Security Contributions				75,071.83
230 PSERS Retirement Contributions				327,182.20
250 Unemployment Compensation				19,071.52
260 Workers' Compensation				10,947.43
299 All Other Employee Benefits				(15,973.62)
Total Personnel Services – Employee Benefits				\$757,011.93
300 <u>Purchased Professional and Technical Services</u>				
324 Professional Educational Services – Employee Training and Development Services				2,180.00
330 Other Professional Services				161,152.99
Total Purchased Professional and Technical Services				\$163,332.99
400 <u>Purchased Property Services</u>				
430 Repairs and Maintenance Services				16,627.64
Total Purchased Property Services				\$16,627.64
600 <u>Supplies</u>				
610 General Supplies	32,856.19	32,856.19		65,712.38
Total Supplies	\$32,856.19	\$32,856.19		\$65,712.38
Total 2660 Safety and Security Services	\$32,856.19	\$32,856.19		\$1,932,774.07

LEA : 114067002 Reading SD

Printed 1/29/2020 11:56:42 AM

REVISED SUBMISSION

General Fund (10)

2690 Other Operation and Maintenance of Plant Services	<u>Elementary</u>	<u>Secondary</u>	<u>Federal</u>	<u>Total</u>
400 <u>Purchased Property Services</u>				
410 Cleaning Services				171,720.80
Total Purchased Property Services				\$171,720.80
Total 2690 Other Operation and Maintenance of Plant Services				\$171,720.80

LEA : 114067002 Reading SD

Printed 1/29/2020 11:56:42 AM

REVISED SUBMISSION

General Fund (10)

2700 Student Transportation Services	Elementary	Secondary	Federal	Total
100 <u>Personnel Services – Salaries</u>				
100 Personnel Services – Salaries				55,232.69
Total Personnel Services – Salaries				\$55,232.69
200 <u>Personnel Services – Employee Benefits</u>				
210 Group Insurance – Contracted Provider				20,800.00
220 Social Security Contributions				4,132.55
230 PSERS Retirement Contributions				16,850.91
260 Workers' Compensation				607.52
Total Personnel Services – Employee Benefits				\$42,390.98
300 <u>Purchased Professional and Technical Services</u>				
324 Professional Educational Services – Employee Training and Development Services				1,125.00
Total Purchased Professional and Technical Services				\$1,125.00
500 <u>Other Purchased Services</u>				
513 Contracted Carriers				24,336.90
516 Student Transportation Services From the IU			23,779.28	5,276,137.17
Total Other Purchased Services			\$23,779.28	\$5,300,474.07
Total 2700 Student Transportation Services			\$23,779.28	\$5,399,222.74

LEA : 114067002 Reading SD

Printed 1/29/2020 11:56:42 AM

REVISED SUBMISSION

General Fund (10)

2710 Supervision of Student Transportation Services	<u>Elementary</u>	<u>Secondary</u>	<u>Federal</u>	<u>Total</u>
100 <u>Personnel Services – Salaries</u>				
100 Personnel Services – Salaries				51,492.69
Total Personnel Services – Salaries				\$51,492.69
200 <u>Personnel Services – Employee Benefits</u>				
210 Group Insurance – Contracted Provider				20,800.00
220 Social Security Contributions				3,846.44
230 PSERS Retirement Contributions				15,500.86
260 Workers' Compensation				566.38
Total Personnel Services – Employee Benefits				\$40,713.68
300 <u>Purchased Professional and Technical Services</u>				
324 Professional Educational Services – Employee Training and Development Services				1,125.00
Total Purchased Professional and Technical Services				\$1,125.00
Total 2710 Supervision of Student Transportation Services				\$93,331.37

LEA : 114067002 Reading SD

Printed 1/29/2020 11:56:42 AM

REVISED SUBMISSION

General Fund (10)

2719 Supervision of Student Transportation Services – All Other Supervision	<u>Elementary</u>	<u>Secondary</u>	<u>Federal</u>	<u>Total</u>
100 <u>Personnel Services – Salaries</u>				
100 Personnel Services – Salaries				51,492.69
Total Personnel Services – Salaries				\$51,492.69
200 <u>Personnel Services – Employee Benefits</u>				
210 Group Insurance – Contracted Provider				20,800.00
220 Social Security Contributions				3,846.44
230 PSERS Retirement Contributions				15,500.86
260 Workers' Compensation				566.38
Total Personnel Services – Employee Benefits				\$40,713.68
300 <u>Purchased Professional and Technical Services</u>				
324 Professional Educational Services – Employee Training and Development Services				1,125.00
Total Purchased Professional and Technical Services				\$1,125.00
Total 2719 Supervision of Student Transportation Services – All Other Supervision				\$93,331.37

LEA : 114067002 Reading SD

Printed 1/29/2020 11:56:42 AM

REVISED SUBMISSION

General Fund (10)

2720 Vehicle Operation Services	<u>Elementary</u>	<u>Secondary</u>	<u>Federal</u>	<u>Total</u>
500 <u>Other Purchased Services</u>				
516 Student Transportation Services From the IU			23,779.28	4,919,733.13
Total Other Purchased Services			\$23,779.28	\$4,919,733.13
Total 2720 Vehicle Operation Services			\$23,779.28	\$4,919,733.13

LEA : 114067002 Reading SD

Printed 1/29/2020 11:56:42 AM

REVISED SUBMISSION

General Fund (10)

2730 Monitoring Services	<u>Elementary</u>	<u>Secondary</u>	<u>Federal</u>	<u>Total</u>
100 <u>Personnel Services – Salaries</u>				
100 Personnel Services – Salaries				3,740.00
Total Personnel Services – Salaries				\$3,740.00
200 <u>Personnel Services – Employee Benefits</u>				
220 Social Security Contributions				286.11
230 PSERS Retirement Contributions				1,350.05
260 Workers’ Compensation				41.14
Total Personnel Services – Employee Benefits				\$1,677.30
Total 2730 Monitoring Services				\$5,417.30

LEA : 114067002 Reading SD

Printed 1/29/2020 11:56:42 AM

REVISED SUBMISSION

General Fund (10)				
2750 Nonpublic Transportation	<u>Elementary</u>	<u>Secondary</u>	<u>Federal</u>	<u>Total</u>
500 <u>Other Purchased Services</u>				
513 Contracted Carriers				24,336.90
516 Student Transportation Services From the IU				356,404.04
Total Other Purchased Services				\$380,740.94
Total 2750 Nonpublic Transportation				\$380,740.94

LEA : 114067002 Reading SD

Printed 1/29/2020 11:56:42 AM

REVISED SUBMISSION

General Fund (10)					
2800 Support Services – Central		Elementary	Secondary	Federal	Total
100 <u>Personnel Services – Salaries</u>					
100 Personnel Services – Salaries				169,295.31	1,239,448.76
Total Personnel Services – Salaries				\$169,295.31	\$1,239,448.76
200 <u>Personnel Services – Employee Benefits</u>					
210 Group Insurance – Contracted Provider				53,200.00	358,400.00
220 Social Security Contributions				12,646.62	92,539.05
230 PSERS Retirement Contributions				27,253.55	400,348.92
250 Unemployment Compensation					4,760.00
260 Workers' Compensation				1,862.20	13,630.82
Total Personnel Services – Employee Benefits				\$94,962.37	\$869,678.79
300 <u>Purchased Professional and Technical Services</u>					
310 Official / Administrative Services					17,054.97
324 Professional Educational Services – Employee Training and Development Services					90,747.00
330 Other Professional Services					132,373.77
340 Technical Services					429,288.73
390 Other Purchased Professional and Technical Services					2,565.00
Total Purchased Professional and Technical Services					\$672,029.47
400 <u>Purchased Property Services</u>					
430 Repairs and Maintenance Services					827.00
Total Purchased Property Services					\$827.00
500 <u>Other Purchased Services</u>					
520 Insurance – General					716,934.42
530 Communications					86,424.23
549 Other Advertising/Public Relations					23,100.75
550 Printing and Binding					1,561.91
580 Travel					6,810.59
596 Direct Payments To Intermediate Units					1,039.78
Total Other Purchased Services					\$835,871.68
600 <u>Supplies</u>					
610 General Supplies				2,323.57	712,661.10
630 Food					3,459.90
640 Books and Periodicals				156.65	305.65
Total Supplies				\$2,480.22	\$716,426.65
700 <u>Property</u>					
762 Capitalized Equipment - Replacement					219,766.85
768 Capitalized Technology Software - Replacement					849,183.78
Total Property					\$1,068,950.63
800 <u>Other Objects</u>					
810 Dues and Fees					14,068.50
890 Miscellaneous Expenditures					19,313.85
Total Other Objects					\$33,382.35
Total 2800 Support Services – Central				\$266,737.90	\$5,436,615.33

LEA : 114067002 Reading SD

Printed 1/29/2020 11:56:42 AM

REVISED SUBMISSION

General Fund (10)				
2810 Planning, Research, Development and Evaluation Services	<u>Elementary</u>	<u>Secondary</u>	<u>Federal</u>	<u>Total</u>
100 <u>Personnel Services – Salaries</u>				
100 Personnel Services – Salaries				97,717.10
Total Personnel Services – Salaries				\$97,717.10
200 <u>Personnel Services – Employee Benefits</u>				
210 Group Insurance – Contracted Provider				17,600.00
220 Social Security Contributions				7,383.53
230 PSERS Retirement Contributions				31,583.74
260 Workers' Compensation				1,074.99
Total Personnel Services – Employee Benefits				\$57,642.26
300 <u>Purchased Professional and Technical Services</u>				
324 Professional Educational Services – Employee Training and Development Services				81,307.00
330 Other Professional Services				300.00
390 Other Purchased Professional and Technical Services				2,565.00
Total Purchased Professional and Technical Services				\$84,172.00
500 <u>Other Purchased Services</u>				
580 Travel				4,404.33
596 Direct Payments To Intermediate Units				1,039.78
Total Other Purchased Services				\$5,444.11
600 <u>Supplies</u>				
610 General Supplies				54,290.25
630 Food				2,848.32
640 Books and Periodicals				149.00
Total Supplies				\$57,287.57
800 <u>Other Objects</u>				
810 Dues and Fees				13,315.00
Total Other Objects				\$13,315.00
Total 2810 Planning, Research, Development and Evaluation Services				\$315,578.04

LEA : 114067002 Reading SD

Printed 1/29/2020 11:56:42 AM

REVISED SUBMISSION

General Fund (10)				
2820 Information Services	<u>Elementary</u>	<u>Secondary</u>	<u>Federal</u>	<u>Total</u>
100 <u>Personnel Services – Salaries</u>				
100 Personnel Services – Salaries				64,286.79
Total Personnel Services – Salaries				\$64,286.79
200 <u>Personnel Services – Employee Benefits</u>				
210 Group Insurance – Contracted Provider				10,500.00
220 Social Security Contributions				4,799.19
230 PSERS Retirement Contributions				20,531.74
260 Workers' Compensation				707.19
Total Personnel Services – Employee Benefits				\$36,538.12
300 <u>Purchased Professional and Technical Services</u>				
340 Technical Services				8,875.00
Total Purchased Professional and Technical Services				\$8,875.00
500 <u>Other Purchased Services</u>				
530 Communications				5,519.30
549 Other Advertising/Public Relations				2,600.00
550 Printing and Binding				1,336.23
Total Other Purchased Services				\$9,455.53
600 <u>Supplies</u>				
610 General Supplies				995.93
630 Food				611.58
Total Supplies				\$1,607.51
800 <u>Other Objects</u>				
810 Dues and Fees				362.00
890 Miscellaneous Expenditures				1,927.00
Total Other Objects				\$2,289.00
Total 2820 Information Services				\$123,051.95

LEA : 114067002 Reading SD

Printed 1/29/2020 11:56:42 AM

REVISED SUBMISSION

General Fund (10)				
2823 Public Information Services	<u>Elementary</u>	<u>Secondary</u>	<u>Federal</u>	<u>Total</u>
100 <u>Personnel Services – Salaries</u>				
100 Personnel Services – Salaries				64,286.79
Total Personnel Services – Salaries				\$64,286.79
200 <u>Personnel Services – Employee Benefits</u>				
210 Group Insurance – Contracted Provider				10,500.00
220 Social Security Contributions				4,799.19
230 PSERS Retirement Contributions				20,531.74
260 Workers' Compensation				707.19
Total Personnel Services – Employee Benefits				\$36,538.12
300 <u>Purchased Professional and Technical Services</u>				
340 Technical Services				8,875.00
Total Purchased Professional and Technical Services				\$8,875.00
500 <u>Other Purchased Services</u>				
530 Communications				5,519.30
549 Other Advertising/Public Relations				2,600.00
550 Printing and Binding				1,336.23
Total Other Purchased Services				\$9,455.53
600 <u>Supplies</u>				
610 General Supplies				995.93
630 Food				611.58
Total Supplies				\$1,607.51
800 <u>Other Objects</u>				
810 Dues and Fees				362.00
890 Miscellaneous Expenditures				1,927.00
Total Other Objects				\$2,289.00
Total 2823 Public Information Services				\$123,051.95

LEA : 114067002 Reading SD

Printed 1/29/2020 11:56:42 AM

REVISED SUBMISSION

General Fund (10)				
2830 Staff Services	Elementary	Secondary	Federal	Total
100 <u>Personnel Services – Salaries</u>				
100 Personnel Services – Salaries				457,161.60
Total Personnel Services – Salaries				\$457,161.60
200 <u>Personnel Services – Employee Benefits</u>				
210 Group Insurance – Contracted Provider				147,900.00
220 Social Security Contributions				34,062.05
230 PSERS Retirement Contributions				148,587.42
250 Unemployment Compensation				4,760.00
260 Workers' Compensation				5,028.05
Total Personnel Services – Employee Benefits				\$340,337.52
300 <u>Purchased Professional and Technical Services</u>				
310 Official / Administrative Services				17,054.97
324 Professional Educational Services – Employee Training and Development Services				9,440.00
330 Other Professional Services				132,073.77
Total Purchased Professional and Technical Services				\$158,568.74
500 <u>Other Purchased Services</u>				
520 Insurance – General				716,934.42
549 Other Advertising/Public Relations				18,150.90
550 Printing and Binding				225.68
580 Travel				1,385.03
Total Other Purchased Services				\$736,696.03
600 <u>Supplies</u>				
610 General Supplies				2,984.94
Total Supplies				\$2,984.94
800 <u>Other Objects</u>				
810 Dues and Fees				391.50
890 Miscellaneous Expenditures				17,386.85
Total Other Objects				\$17,778.35
Total 2830 Staff Services				\$1,713,527.18

LEA : 114067002 Reading SD

Printed 1/29/2020 11:56:42 AM

REVISED SUBMISSION

General Fund (10)

2831 Supervision of Staff Services	<u>Elementary</u>	<u>Secondary</u>	<u>Federal</u>	<u>Total</u>
100 <u>Personnel Services – Salaries</u>				
100 Personnel Services – Salaries				18,642.30
Total Personnel Services – Salaries				\$18,642.30
200 <u>Personnel Services – Employee Benefits</u>				
210 Group Insurance – Contracted Provider				2,600.00
220 Social Security Contributions				1,412.90
230 PSERS Retirement Contributions				6,071.78
260 Workers' Compensation				205.06
Total Personnel Services – Employee Benefits				\$10,289.74
Total 2831 Supervision of Staff Services				\$28,932.04

LEA : 114067002 Reading SD

Printed 1/29/2020 11:56:42 AM

REVISED SUBMISSION

General Fund (10)				
2832 Recruitment and Placement Services	Elementary	Secondary	Federal	Total
100 Personnel Services – Salaries				
100 Personnel Services – Salaries				438,519.30
Total Personnel Services – Salaries				\$438,519.30
200 Personnel Services – Employee Benefits				
210 Group Insurance – Contracted Provider				145,300.00
220 Social Security Contributions				32,649.15
230 PSERS Retirement Contributions				142,515.64
250 Unemployment Compensation				4,760.00
260 Workers' Compensation				4,822.99
Total Personnel Services – Employee Benefits				\$330,047.78
300 Purchased Professional and Technical Services				
310 Official / Administrative Services				17,054.97
324 Professional Educational Services – Employee Training and Development Services				2,480.00
330 Other Professional Services				132,073.77
Total Purchased Professional and Technical Services				\$151,608.74
500 Other Purchased Services				
520 Insurance – General				716,934.42
549 Other Advertising/Public Relations				18,150.90
550 Printing and Binding				225.68
580 Travel				1,385.03
Total Other Purchased Services				\$736,696.03
600 Supplies				
610 General Supplies				2,984.94
Total Supplies				\$2,984.94
800 Other Objects				
810 Dues and Fees				391.50
890 Miscellaneous Expenditures				17,386.85
Total Other Objects				\$17,778.35
Total 2832 Recruitment and Placement Services				\$1,677,635.14

LEA : 114067002 Reading SD

Printed 1/29/2020 11:56:42 AM

REVISED SUBMISSION

General Fund (10)

2834 Staff Development Services – Non-Instructional, Certified Staff Only	<u>Elementary</u>	<u>Secondary</u>	<u>Federal</u>	<u>Total</u>
300 <u>Purchased Professional and Technical Services</u>				
324 Professional Educational Services – Employee Training and Development Services				6,960.00
Total Purchased Professional and Technical Services				\$6,960.00
Total 2834 Staff Development Services – Non-Instructional, Certified Staff Only				\$6,960.00

LEA : 114067002 Reading SD

Printed 1/29/2020 11:56:42 AM

REVISED SUBMISSION

General Fund (10)				
2840 Data Processing Services	Elementary	Secondary	Federal	Total
100 Personnel Services – Salaries				
100 Personnel Services – Salaries				450,987.96
Total Personnel Services – Salaries				\$450,987.96
200 Personnel Services – Employee Benefits				
210 Group Insurance – Contracted Provider				129,200.00
220 Social Security Contributions				33,647.66
230 PSERS Retirement Contributions				145,138.92
260 Workers' Compensation				4,958.39
Total Personnel Services – Employee Benefits				\$312,944.97
300 Purchased Professional and Technical Services				
340 Technical Services				420,413.73
Total Purchased Professional and Technical Services				\$420,413.73
400 Purchased Property Services				
430 Repairs and Maintenance Services				827.00
Total Purchased Property Services				\$827.00
500 Other Purchased Services				
530 Communications				80,904.93
549 Other Advertising/Public Relations				1,985.75
580 Travel				1,021.23
Total Other Purchased Services				\$83,911.91
600 Supplies				
610 General Supplies				652,066.41
Total Supplies				\$652,066.41
700 Property				
762 Capitalized Equipment - Replacement				219,766.85
768 Capitalized Technology Software - Replacement				849,183.78
Total Property				\$1,068,950.63
Total 2840 Data Processing Services				\$2,990,102.61

LEA : 114067002 Reading SD

Printed 1/29/2020 11:56:42 AM

REVISED SUBMISSION

General Fund (10)

2850 State and Federal Agency Liaison Services	<u>Elementary</u>	<u>Secondary</u>	<u>Federal</u>	<u>Total</u>
100 <u>Personnel Services – Salaries</u>				
100 Personnel Services – Salaries			169,295.31	169,295.31
Total Personnel Services – Salaries			\$169,295.31	\$169,295.31
200 <u>Personnel Services – Employee Benefits</u>				
210 Group Insurance – Contracted Provider			53,200.00	53,200.00
220 Social Security Contributions			12,646.62	12,646.62
230 PSERS Retirement Contributions			27,253.55	54,507.10
260 Workers' Compensation			1,862.20	1,862.20
Total Personnel Services – Employee Benefits			\$94,962.37	\$122,215.92
500 <u>Other Purchased Services</u>				
549 Other Advertising/Public Relations				364.10
Total Other Purchased Services				\$364.10
600 <u>Supplies</u>				
610 General Supplies			2,323.57	2,323.57
640 Books and Periodicals			156.65	156.65
Total Supplies			\$2,480.22	\$2,480.22
Total 2850 State and Federal Agency Liaison Services			\$266,737.90	\$294,355.55

LEA : 114067002 Reading SD

Printed 1/29/2020 11:56:42 AM

REVISED SUBMISSION

General Fund (10)				
2900 Other Support Services	<u>Elementary</u>	<u>Secondary</u>	<u>Federal</u>	<u>Total</u>
100 <u>Personnel Services – Salaries</u>				
100 Personnel Services – Salaries				40,018.60
Total Personnel Services – Salaries				\$40,018.60
200 <u>Personnel Services – Employee Benefits</u>				
210 Group Insurance – Contracted Provider				17,800.00
220 Social Security Contributions				2,972.01
230 PSERS Retirement Contributions				12,936.48
260 Workers' Compensation				440.17
Total Personnel Services – Employee Benefits				\$34,148.66
500 <u>Other Purchased Services</u>				
595 IU Payments By Withholding			42,972.88	42,972.88
Total Other Purchased Services			\$42,972.88	\$42,972.88
800 <u>Other Objects</u>				
810 Dues and Fees			8,506.00	8,506.00
Total Other Objects			\$8,506.00	\$8,506.00
Total 2900 Other Support Services			\$51,478.88	\$125,646.14

LEA : 114067002 Reading SD

Printed 1/29/2020 11:56:42 AM

REVISED SUBMISSION

General Fund (10)

2910 Support Services Not Listed Elsewhere In the 2000 Series	<u>Elementary</u>	<u>Secondary</u>	<u>Federal</u>	<u>Total</u>
100 <u>Personnel Services – Salaries</u>				
100 Personnel Services – Salaries				40,018.60
Total Personnel Services – Salaries				\$40,018.60
200 <u>Personnel Services – Employee Benefits</u>				
210 Group Insurance – Contracted Provider				17,800.00
220 Social Security Contributions				2,972.01
230 PSERS Retirement Contributions				12,936.48
260 Workers' Compensation				440.17
Total Personnel Services – Employee Benefits				\$34,148.66
500 <u>Other Purchased Services</u>				
595 IU Payments By Withholding			42,972.88	42,972.88
Total Other Purchased Services			\$42,972.88	\$42,972.88
800 <u>Other Objects</u>				
810 Dues and Fees			8,506.00	8,506.00
Total Other Objects			\$8,506.00	\$8,506.00
Total 2910 Support Services Not Listed Elsewhere In the 2000 Series			\$51,478.88	\$125,646.14

LEA : 114067002 Reading SD

Printed 1/29/2020 11:56:51 AM

REVISED SUBMISSION

General Fund (10)	
3000 Operation of Non-Instructional Services	<u>Total</u>
100 <u>Personnel Services – Salaries</u>	
100 Personnel Services – Salaries	1,270,392.40
Total Personnel Services – Salaries	\$1,270,392.40
200 <u>Personnel Services – Employee Benefits</u>	
210 Group Insurance – Contracted Provider	299,000.00
220 Social Security Contributions	95,713.60
230 PSERS Retirement Contributions	381,602.48
260 Workers' Compensation	13,308.14
Total Personnel Services – Employee Benefits	\$789,624.22
300 <u>Purchased Professional and Technical Services</u>	
322 Professional Educational Services – Ius	6,012.00
329 Professional Educational Services – Other	4,852.00
330 Other Professional Services	127,525.00
340 Technical Services	40,209.10
390 Other Purchased Professional and Technical Services	13,948.00
Total Purchased Professional and Technical Services	\$192,546.10
400 <u>Purchased Property Services</u>	
410 Cleaning Services	2,637.70
430 Repairs and Maintenance Services	11,071.77
Total Purchased Property Services	\$13,709.47
500 <u>Other Purchased Services</u>	
510 Student Transportation Services	245,401.04
520 Insurance – General	35,836.71
549 Other Advertising/Public Relations	90.00
550 Printing and Binding	1,649.91
580 Travel	9,752.87
591 Services Purchased Locally	149,240.50
Total Other Purchased Services	\$441,971.03
600 <u>Supplies</u>	
610 General Supplies	176,948.98
630 Food	63,014.79
640 Books and Periodicals	770.00
Total Supplies	\$240,733.77
700 <u>Property</u>	
790 Other Property	24,594.36
Total Property	\$24,594.36
800 <u>Other Objects</u>	
810 Dues and Fees	22,407.43
890 Miscellaneous Expenditures	11,029.34
Total Other Objects	\$33,436.77
Total 3000 Operation of Non-Instructional Services	\$3,007,008.12

LEA : 114067002 Reading SD

Printed 1/29/2020 11:56:51 AM

REVISED SUBMISSION

General Fund (10)				
3200 Student Activities	Elementary	Secondary	Federal	Total
100 <u>Personnel Services – Salaries</u>				
100 Personnel Services – Salaries				874,080.60
Total Personnel Services – Salaries				\$874,080.60
200 <u>Personnel Services – Employee Benefits</u>				
210 Group Insurance – Contracted Provider				53,000.00
220 Social Security Contributions				66,537.91
230 PSERS Retirement Contributions				253,400.58
260 Workers' Compensation				8,949.04
Total Personnel Services – Employee Benefits				\$381,887.53
300 <u>Purchased Professional and Technical Services</u>				
330 Other Professional Services				127,525.00
340 Technical Services				40,209.10
390 Other Purchased Professional and Technical Services				13,948.00
Total Purchased Professional and Technical Services				\$181,682.10
400 <u>Purchased Property Services</u>				
410 Cleaning Services				2,637.70
430 Repairs and Maintenance Services				11,071.77
Total Purchased Property Services				\$13,709.47
500 <u>Other Purchased Services</u>				
510 Student Transportation Services				245,401.04
520 Insurance – General				35,836.71
549 Other Advertising/Public Relations				90.00
550 Printing and Binding				1,649.91
580 Travel				8,895.24
Total Other Purchased Services				\$291,872.90
600 <u>Supplies</u>				
610 General Supplies				119,447.29
630 Food				57,172.51
640 Books and Periodicals				472.50
Total Supplies				\$177,092.30
700 <u>Property</u>				
790 Other Property				24,594.36
Total Property				\$24,594.36
800 <u>Other Objects</u>				
810 Dues and Fees				22,407.43
890 Miscellaneous Expenditures				11,029.34
Total Other Objects				\$33,436.77
Total 3200 Student Activities				\$1,978,356.03

LEA : 114067002 Reading SD

Printed 1/29/2020 11:56:51 AM

REVISED SUBMISSION

General Fund (10)				
3300 Community Services				
	<u>Elementary</u>	<u>Secondary</u>	<u>Federal</u>	<u>Total</u>
100 <u>Personnel Services – Salaries</u>				
100 Personnel Services – Salaries			396,311.80	396,311.80
Total Personnel Services – Salaries			\$396,311.80	\$396,311.80
200 <u>Personnel Services – Employee Benefits</u>				
210 Group Insurance – Contracted Provider			246,000.00	246,000.00
220 Social Security Contributions			29,175.69	29,175.69
230 PSERS Retirement Contributions			64,286.08	128,201.90
260 Workers' Compensation			4,359.10	4,359.10
Total Personnel Services – Employee Benefits			\$343,820.87	\$407,736.69
300 <u>Purchased Professional and Technical Services</u>				
322 Professional Educational Services – Ius			6,012.00	6,012.00
329 Professional Educational Services – Other				4,852.00
Total Purchased Professional and Technical Services			\$6,012.00	\$10,864.00
500 <u>Other Purchased Services</u>				
580 Travel			857.63	857.63
591 Services Purchased Locally				149,240.50
Total Other Purchased Services			\$857.63	\$150,098.13
600 <u>Supplies</u>				
610 General Supplies			57,501.69	57,501.69
630 Food			5,842.28	5,842.28
640 Books and Periodicals			297.50	297.50
Total Supplies			\$63,641.47	\$63,641.47
Total 3300 Community Services			\$810,643.77	\$1,028,652.09

LEA : 114067002 Reading SD

Printed 1/29/2020 11:56:59 AM

REVISED SUBMISSION

General Fund (10)

4000 Facilities Acquisition, Construction and Improvement Services

Total

300 Purchased Professional and Technical Services

330 Other Professional Services	736,076.00
---------------------------------	------------

Total Purchased Professional and Technical Services	\$736,076.00
--	---------------------

400 Purchased Property Services

450 Construction Services	3,405,631.15
---------------------------	--------------

Total Purchased Property Services	\$3,405,631.15
--	-----------------------

600 Supplies

610 General Supplies	219,926.70
----------------------	------------

Total Supplies	\$219,926.70
-----------------------	---------------------

Total 4000 Facilities Acquisition, Construction and Improvement Services	\$4,361,633.85
---	-----------------------

LEA : 114067002 Reading SD

Printed 1/29/2020 11:56:59 AM

REVISED SUBMISSION

General Fund (10)

4400 Architecture and Engineering Services / Educational Specifications – Improvements	<u>Elementary</u>	<u>Secondary</u>	<u>Federal</u>	<u>Total</u>
300 <u>Purchased Professional and Technical Services</u>				
330 Other Professional Services				736,076.00
Total Purchased Professional and Technical Services				\$736,076.00
Total 4400 Architecture and Engineering Services / Educational Specifications – Improvements				\$736,076.00

LEA : 114067002 Reading SD

Printed 1/29/2020 11:56:59 AM

REVISED SUBMISSION

General Fund (10)

4600 Existing Building Improvement Services	<u>Elementary</u>	<u>Secondary</u>	<u>Federal</u>	<u>Total</u>
400 <u>Purchased Property Services</u>				
450 Construction Services				3,405,631.15
Total Purchased Property Services				\$3,405,631.15
600 <u>Supplies</u>				
610 General Supplies				219,926.70
Total Supplies				\$219,926.70
Total 4600 Existing Building Improvement Services				\$3,625,557.85

General Fund (10)

5000 Other Expenditures and Financing Uses

Total

800	<u>Other Objects</u>	
830	Interest	9,885,747.00
880	Refunds of Prior Years' Receipts	34,302.14
Total Other Objects		\$9,920,049.14
900	<u>Other Uses of Funds</u>	
910	Redemption of Principal	11,995,000.00
939	Other Fund Transfers	462,860.00
Total Other Uses of Funds		\$12,457,860.00
Total 5000 Other Expenditures and Financing Uses		\$22,377,909.14

LEA : 114067002 Reading SD

Printed 1/29/2020 11:57:08 AM

REVISED SUBMISSION

General Fund (10)

5100 Debt Service / Other Expenditures and Financing Uses	<u>Elementary</u>	<u>Secondary</u>	<u>Federal</u>	<u>Total</u>
800 <u>Other Objects</u>				
830 Interest				9,885,747.00
880 Refunds of Prior Years' Receipts				34,302.14
Total Other Objects				\$9,920,049.14
900 <u>Other Uses of Funds</u>				
910 Redemption of Principal				11,995,000.00
Total Other Uses of Funds				\$11,995,000.00
Total 5100 Debt Service / Other Expenditures and Financing Uses				\$21,915,049.14

LEA : 114067002 Reading SD

Printed 1/29/2020 11:57:08 AM

REVISED SUBMISSION

General Fund (10)				
5110 Debt Service	<u>Elementary</u>	<u>Secondary</u>	<u>Federal</u>	<u>Total</u>
800 <u>Other Objects</u>				
830 Interest				9,885,747.00
Total Other Objects				\$9,885,747.00
900 <u>Other Uses of Funds</u>				
910 Redemption of Principal				11,995,000.00
Total Other Uses of Funds				\$11,995,000.00
Total 5110 Debt Service				\$21,880,747.00

LEA : 114067002 Reading SD

Printed 1/29/2020 11:57:08 AM

REVISED SUBMISSION

General Fund (10)

5130 Refund of Prior Year Revenues / Receipts	<u>Elementary</u>	<u>Secondary</u>	<u>Federal</u>	<u>Total</u>
800 <u>Other Objects</u>				
880 Refunds of Prior Years' Receipts				34,302.14
Total Other Objects				\$34,302.14
Total 5130 Refund of Prior Year Revenues / Receipts				\$34,302.14

LEA : 114067002 Reading SD

Printed 1/29/2020 11:57:08 AM

REVISED SUBMISSION

General Fund (10)

5200 Interfund Transfers – Out	<u>Elementary</u>	<u>Secondary</u>	<u>Federal</u>	<u>Total</u>
900 <u>Other Uses of Funds</u>				
939 Other Fund Transfers				462,860.00
Total Other Uses of Funds				\$462,860.00
Total 5200 Interfund Transfers – Out				\$462,860.00

LEA : 114067002 Reading SD

Printed 1/29/2020 11:57:08 AM

REVISED SUBMISSION

General Fund (10)

5230 Capital Projects Fund Transfers	<u>Elementary</u>	<u>Secondary</u>	<u>Federal</u>	<u>Total</u>
900 <u>Other Uses of Funds</u>				
939 Other Fund Transfers				462,860.00
Total Other Uses of Funds				\$462,860.00
Total 5230 Capital Projects Fund Transfers				\$462,860.00

LEA : 114067002 Reading SD

Printed 1/29/2020 11:56:53 AM

REVISED SUBMISSION

Other Comptroller-Approved Special Revenue Funds (28)

3000 Operation of Non-Instructional Services	Total
300 <u>Purchased Professional and Technical Services</u>	
330 Other Professional Services	300.00
Total Purchased Professional and Technical Services	\$300.00
400 <u>Purchased Property Services</u>	
440 Rentals	1,021.42
Total Purchased Property Services	\$1,021.42
500 <u>Other Purchased Services</u>	
591 Services Purchased Locally	48,818.00
Total Other Purchased Services	\$48,818.00
600 <u>Supplies</u>	
610 General Supplies	84,230.51
630 Food	951.08
Total Supplies	\$85,181.59
800 <u>Other Objects</u>	
810 Dues and Fees	4,055.00
890 Miscellaneous Expenditures	33,974.69
Total Other Objects	\$38,029.69
Total 3000 Operation of Non-Instructional Services	\$173,350.70

LEA : 114067002 Reading SD

Printed 1/29/2020 11:56:53 AM

REVISED SUBMISSION

Other Comptroller-Approved Special Revenue Funds (28)

3300 Community Services	Elementary	Secondary	Federal	Total
300 <u>Purchased Professional and Technical Services</u>				
330 Other Professional Services				300.00
Total Purchased Professional and Technical Services				\$300.00
400 <u>Purchased Property Services</u>				
440 Rentals				1,021.42
Total Purchased Property Services				\$1,021.42
500 <u>Other Purchased Services</u>				
591 Services Purchased Locally				48,818.00
Total Other Purchased Services				\$48,818.00
600 <u>Supplies</u>				
610 General Supplies				84,230.51
630 Food				951.08
Total Supplies				\$85,181.59
800 <u>Other Objects</u>				
810 Dues and Fees				4,055.00
890 Miscellaneous Expenditures				33,974.69
Total Other Objects				\$38,029.69
Total 3300 Community Services				\$173,350.70

LEA : 114067002 Reading SD

Printed 1/29/2020 11:57:01 AM

REVISED SUBMISSION

Other Capital Projects Fund (39)

4000 Facilities Acquisition, Construction and Improvement Services

Total

300 Purchased Professional and Technical Services

330 Other Professional Services	221,319.00
---------------------------------	------------

Total Purchased Professional and Technical Services	\$221,319.00
--	---------------------

400 Purchased Property Services

450 Construction Services	2,548,466.00
---------------------------	--------------

Total Purchased Property Services	\$2,548,466.00
--	-----------------------

Total 4000 Facilities Acquisition, Construction and Improvement Services	\$2,769,785.00
---	-----------------------

LEA : 114067002 Reading SD

Printed 1/29/2020 11:57:01 AM

REVISED SUBMISSION

Other Capital Projects Fund (39)

4600 Existing Building Improvement Services	<u>Elementary</u>	<u>Secondary</u>	<u>Federal</u>	<u>Total</u>
300 <u>Purchased Professional and Technical Services</u>				
330 Other Professional Services				221,319.00
Total Purchased Professional and Technical Services				\$221,319.00
400 <u>Purchased Property Services</u>				
450 Construction Services				2,548,466.00
Total Purchased Property Services				\$2,548,466.00
Total 4600 Existing Building Improvement Services				\$2,769,785.00

LEA : 114067002 Reading SD

Printed 1/29/2020 11:56:47 AM

REVISED SUBMISSION

Debt Service Fund (40)

2000 Support Services

Total

500 Other Purchased Services

599 Other Miscellaneous Purchased Services	1,221,261.25
--	--------------

Total Other Purchased Services	\$1,221,261.25
--------------------------------	----------------

Total 2000 Support Services	\$1,221,261.25
-----------------------------	----------------

LEA : 114067002 Reading SD

Printed 1/29/2020 11:56:47 AM

REVISED SUBMISSION

Debt Service Fund (40)

2300 Support Services – Administration

Elementary

Secondary

Federal

Total

500 Other Purchased Services

599 Other Miscellaneous Purchased Services

1,221,261.25

Total Other Purchased Services				\$1,221,261.25
Total 2300 Support Services – Administration				\$1,221,261.25

LEA : 114067002 Reading SD

Printed 1/29/2020 11:56:47 AM

REVISED SUBMISSION

Debt Service Fund (40)				
2390 Other Administration Services	<u>Elementary</u>	<u>Secondary</u>	<u>Federal</u>	<u>Total</u>
500 <u>Other Purchased Services</u>				
599 Other Miscellaneous Purchased Services				1,221,261.25
Total Other Purchased Services				\$1,221,261.25
Total 2390 Other Administration Services				\$1,221,261.25

Debt Service Fund (40)

5000 Other Expenditures and Financing Uses

Total

800 <u>Other Objects</u>	
830 Interest	5,500,279.96
Total Other Objects	\$5,500,279.96
900 <u>Other Uses of Funds</u>	
910 Redemption of Principal	94,825,000.00
Total Other Uses of Funds	\$94,825,000.00
Total 5000 Other Expenditures and Financing Uses	\$100,325,279.96

LEA : 114067002 Reading SD

Printed 1/29/2020 11:57:11 AM

REVISED SUBMISSION

Debt Service Fund (40)

5100 Debt Service / Other Expenditures and Financing Uses	<u>Elementary</u>	<u>Secondary</u>	<u>Federal</u>	<u>Total</u>
800 <u>Other Objects</u>				
830 Interest				5,500,279.96
Total Other Objects				\$5,500,279.96
900 <u>Other Uses of Funds</u>				
910 Redemption of Principal				94,825,000.00
Total Other Uses of Funds				\$94,825,000.00
Total 5100 Debt Service / Other Expenditures and Financing Uses				\$100,325,279.96

LEA : 114067002 Reading SD

Printed 1/29/2020 11:57:11 AM

REVISED SUBMISSION

Debt Service Fund (40)				
5110 Debt Service	<u>Elementary</u>	<u>Secondary</u>	<u>Federal</u>	<u>Total</u>
800 <u>Other Objects</u>				
830 Interest				28,217.00
Total Other Objects				\$28,217.00
Total 5110 Debt Service				\$28,217.00

LEA : 114067002 Reading SD

Printed 1/29/2020 11:57:11 AM

REVISED SUBMISSION

Debt Service Fund (40)				
5120 Debt Service – Refunded Bonds	<u>Elementary</u>	<u>Secondary</u>	<u>Federal</u>	<u>Total</u>
800 <u>Other Objects</u>				
830 Interest				5,472,062.96
Total Other Objects				\$5,472,062.96
900 <u>Other Uses of Funds</u>				
910 Redemption of Principal				94,825,000.00
Total Other Uses of Funds				\$94,825,000.00
Total 5120 Debt Service – Refunded Bonds				\$100,297,062.96

LEA : 114067002 Reading SD

Printed 1/29/2020 11:57:28 AM

REVISED SUBMISSION

	General Fund(10)	Public Purpose Trust(27)	Other Compt Approved (28)	Athletic / Activity(29)	Capital Reserve (690. 1850)(31)
1000 Instruction					
1100 Regular Programs - Elementary / Secondary	99,870,204.25				
1200 Special Programs - Elementary / Secondary	46,217,854.83				
1300 Vocational Education	5,101,858.95				
1400 Other Instructional Programs - Elementary / Secondary	3,194,377.08				
1500 Nonpublic School Programs	575,665.94				
1600 Adult Education Programs	18,217.24				
1800 Pre-Kindergarten	1,908,740.08				
Total Instruction	\$156,886,918.37				
2000 Support Services					
2100 Support Services - Students	9,172,490.15				
2200 Support Services - Instructional Staff	4,758,370.01				
2300 Support Services - Administration	19,960,862.53				
2400 Support Services - Pupil Health	3,545,268.83				
2500 Support Services - Business	1,798,252.57				
2600 Operation and Maintenance of Plant Services	20,313,602.86				
2700 Student Transportation Services	5,399,222.74				
2800 Support Services - Central	5,436,615.33				
2900 Other Support Services	125,646.14				
Total Support Services	\$70,510,331.16				
3000 Operation of Non-Instructional Services					
3200 Student Activities	1,978,356.03				
3300 Community Services	1,028,652.09		173,350.70		
Total Operation of Non-Instructional Services	\$3,007,008.12		\$173,350.70		
4000 Facilities Acquisition, Construction and Improvement Services					
4400 Architecture and Engineering Services / Educational Specifications - Improvements	736,076.00				
4600 Existing Building Improvement Services	3,625,557.85				
Total Facilities Acquisition, Construction and Improvement	\$4,361,633.85				
5000 Other Expenditures and Financing Uses					
5100 Debt Service / Other Expenditures and Financing Uses	21,915,049.14				
5200 Interfund Transfers - Out	462,860.00				
Total Other Expenditures and Financing Uses	\$22,377,909.14				
TOTAL ACTUAL EXPENDITURES & OTHER FINANCING USES	\$257,143,800.64		\$173,350.70		

LEA : 114067002 Reading SD

Printed 1/29/2020 11:57:28 AM

REVISED SUBMISSION

	Capital Reserve (1431)(32)	Other Capital Projects Fund(39)	Debt Service(40)	Permanent(90)	Total
1000 <u>Instruction</u>					
1100 Regular Programs - Elementary / Secondary					99,870,204.25
1200 Special Programs - Elementary / Secondary					46,217,854.83
1300 Vocational Education					5,101,858.95
1400 Other Instructional Programs - Elementary / Secondary					3,194,377.08
1500 Nonpublic School Programs					575,665.94
1600 Adult Education Programs					18,217.24
1800 Pre-Kindergarten					1,908,740.08
Total Instruction					\$156,886,918.37
2000 <u>Support Services</u>					
2100 Support Services - Students					9,172,490.15
2200 Support Services - Instructional Staff					4,758,370.01
2300 Support Services - Administration			1,221,261.25		21,182,123.78
2400 Support Services - Pupil Health					3,545,268.83
2500 Support Services - Business					1,798,252.57
2600 Operation and Maintenance of Plant Services					20,313,602.86
2700 Student Transportation Services					5,399,222.74
2800 Support Services - Central					5,436,615.33
2900 Other Support Services					125,646.14
Total Support Services			\$1,221,261.25		\$71,731,592.41
3000 <u>Operation of Non-Instructional Services</u>					
3200 Student Activities					1,978,356.03
3300 Community Services					1,202,002.79
Total Operation of Non-Instructional Services					\$3,180,358.82
4000 <u>Facilities Acquisition, Construction and Improvement Services</u>					
4400 Architecture and Engineering Services / Educational Specifications - Improvements					736,076.00
4600 Existing Building Improvement Services		2,769,785.00			6,395,342.85
Total Facilities Acquisition, Construction and Improvement		\$2,769,785.00			\$7,131,418.85
5000 <u>Other Expenditures and Financing Uses</u>					
5100 Debt Service / Other Expenditures and Financing Uses			100,325,279.96		122,240,329.10
5200 Interfund Transfers - Out					462,860.00
Total Other Expenditures and Financing Uses			\$100,325,279.96		\$122,703,189.10
TOTAL ACTUAL EXPENDITURES & OTHER FINANCING USES		\$2,769,785.00	\$101,546,541.21		\$361,633,477.55

LEA : 114067002 Reading SD

Printed 1/29/2020 11:57:38 AM

REVISED SUBMISSION

PSERS Salary Data (Salary Data should relate to the General Fund only)

Amount	Description	Amount
	Total Salary Base for salaries subject to PSERS withholding	84,558,729.85
	Total Federally Funded salaries subject to PSERS withholding	8,402,175.61

Title I Expenditure Data

Amount	Description	Amount
	Expenditures Funded with Current Title I Funds	11,120,466.82
	Expenditures Funded with Carry over Title I Funds	1,380,298.60
Total Title I Expenditure Data		\$12,500,765.42

REVISED SUBMISSION

Benefits for Staff Relative to Collective Bargaining Agreements

	OBJECT	COVERED	NOT COVERED	TOTAL
10 General Fund				
	211 Medical Insurance			
	212 Dental Insurance			
	215 Eye Care Insurance			
	216 Prescription Insurance			
	271 Self-Insurance Medical Benefits	23,896,487.46		23,896,487.46
	272 Self-Insurance Dental Benefits			
	275 Self-Insurance Eye Care Benefits			
	276 Self-Insurance Prescription Benefits			
	FUND TOTAL	\$23,896,487.46		\$23,896,487.46
50 Enterprise Fund	No Self Insurance data to report			
	211 Medical Insurance			
	212 Dental Insurance			
	215 Eye Care Insurance			
	216 Prescription Insurance			
	271 Self-Insurance Medical Benefits			
	272 Self-Insurance Dental Benefits			
	275 Self-Insurance Eye Care Benefits			
	276 Self-Insurance Prescription Benefits			
	FUND TOTAL			
60 Internal Service Fund	No Self Insurance data to report			
	211 Medical Insurance			
	212 Dental Insurance			
	215 Eye Care Insurance			
	216 Prescription Insurance			
	271 Self-Insurance Medical Benefits			
	272 Self-Insurance Dental Benefits			
	275 Self-Insurance Eye Care Benefits			
	276 Self-Insurance Prescription Benefits			
	FUND TOTAL			
Total of All Funds		\$23,896,487.46		\$23,896,487.46

LEA : 114067002 Reading SD

Printed 1/29/2020 11:57:45 AM

REVIS
ED SUBMISSION

Function	Special Education (Prior Year)	Nonspecial Education (Prior Year)	Total (Prior Year)	Special Education (Current Year)	Nonspecial Education (Current Year)	Total (Current Year)
2120 Guidance Services	230,043.35	4,169,319.97	4,399,363.32	171,885.63	4,476,973.73	4,648,859.36
2140 Psychological Services	101,778.86	1,147,997.99	1,249,776.85	873,511.29	1,358,659.95	2,232,171.24
2150 Speech Pathology and Audiology Services						
2160 Social Work Services		262,150.06	262,150.06		488,439.27	488,439.27
2260 Instruction and Curriculum Development Services	251,063.97	934,809.95	1,185,873.92	33,819.60	677,888.48	711,708.08
2350 Legal and Accounting Services	256,425.06	574,780.17	831,205.23	297,774.37	708,220.47	1,005,994.84
2420 Medical Services		578,131.30	578,131.30		632,050.71	632,050.71
2440 Nursing Services	165,168.43	2,228,503.09	2,393,671.52	169,028.36	2,327,340.97	2,496,369.33
2700 Student Transportation Services	3,091,084.63	2,012,906.82	5,103,991.45	3,487,021.21	1,912,201.53	5,399,222.74
Total	\$4,095,564.30	\$11,908,599.35	\$16,004,163.65	\$5,033,040.46	\$12,581,775.11	\$17,614,815.57

LEA : 114067002 Reading SD

Printed 1/29/2020 11:57:49 AM

REVISED SUBMISSION

(PRINCIPAL AMOUNTS ONLY)

GOVERNMENTAL FUNDS/ ACTIVITIES

	Short-Term Borrowing	General Obligation Bonds/Notes	Authority Building Obligations	Other Long-Term Debt	Other Post- Employment Benefits (OPEB)	Compensated Absences	Net Pension Liability	Total
1. Debt at Beginning of Fiscal Year		295,807,014.00			128,163,818.00	2,548,930.67	313,683,000.00	740,202,762.67
2. Additional Debt Incurred During Year		91,090,000.00			41,102,126.00	14,005.59	13,754,000.00	145,960,131.59
3. Retirements and Repayments		106,820,000.00						106,820,000.00
4. Debt at End of Fiscal Year		280,077,014.00			169,265,944.00	2,562,936.26	327,437,000.00	779,342,894.26
5. Accreted Interest at End Of Fiscal Year		30,679,908.00						30,679,908.00
6. Total Debt and Accreted Interest		310,756,922.00			169,265,944.00	2,562,936.26	327,437,000.00	810,022,802.26
7. Current Portion P&I - Due within 1 year		24,063,485.00						24,063,485.00
8. Interest Paid during current fiscal year		15,413,658.96						15,413,658.96

(PRINCIPAL AMOUNTS ONLY)

PROPRIETARY FUNDS

- Debt at Beginning of Fiscal Year
- Additional Debt Incurred During Year
- Retirements and Repayments
- Debt at End of Fiscal Year
- Accreted Interest at End Of Fiscal Year
- Total Debt and Accreted Interest
- Current Portion P&I - Due within 1 year
- Interest Paid during current fiscal year

LEA : 114067002 Reading SD

Printed 1/29/2020 11:57:49 AM

REVIS
ED SUBMISSION

Total Principal and Interest Payments Made by Your School - All Funds

Function	Fund		Principal (910)	Principal (920)	Interest (830)	Total (Principal +Interest)	Misc Other Uses (990)
5110	10	General Fund	11,995,000.00		9,885,747.00	21,880,747.00	
5110	20	Special Revenue Funds					
5110	30	Capital Projects Funds					
5110	40	Debt Service Fund			28,217.00	28,217.00	
5110	90	Permanent Fund					
5120	10	General Fund					
5120	20	Special Revenue Funds					
5120	30	Capital Projects Funds					
5120	40	Debt Service Fund	94,825,000.00		5,472,062.96	100,297,062.96	
Total Debt Payments - Governmental Funds			\$106,820,000.00		\$15,386,026.96	\$122,206,026.96	

Function	Fund		Principal (910)	Principal (920)	Interest (830)	Total (Principal +Interest)
5110	50	Enterprise Fund				
5110	60	Internal Service Fund				
5120	50	Enterprise Fund				
5120	60	Internal Service Fund				
Total Debt Payments - Proprietary Funds						

LEA : 114067002 Reading SD

Printed 1/29/2020 11:57:49 AM

REVISED SUBMISSION

Debt Details
Governmental Funds/ Activities

Debt Category	Debt Issue Date (MM/YYYY)	Principal Amounts Only				Current Portion Due Within One Year (Principal and Interest)	Interest Paid During Fiscal Year
		Debt at Beginning of Fiscal Year	Additions	Reductions / Repayments	Debt at End of Fiscal Year		
General Obligation Bonds/Notes – CIB	08/2017		91,090,000.00		91,090,000.00	4,287,600.00	2,153,196.00
General Obligation Bonds/Notes – CIB	10/2015	84,535,000.00		1,795,000.00	82,740,000.00	5,695,112.00	3,904,862.00
General Obligation Bonds/Notes – CIB	10/2015	2,730,000.00			2,730,000.00	112,613.00	112,613.00
General Obligation Bonds/Notes – CIB	10/2015	8,725,000.00		1,580,000.00	7,145,000.00	2,017,250.00	436,250.00
General Obligation Bonds/Notes – CIB	05/2014	620,000.00			620,000.00	18,600.00	18,600.00
General Obligation Bonds/Notes – CIB	05/2014	9,020,000.00		120,000.00	8,900,000.00	407,488.00	284,888.00
General Obligation Bonds/Notes – CIB	07/2014	9,760,000.00		70,000.00	9,690,000.00	422,166.00	353,566.00
General Obligation Bonds/Notes – CIB	05/2012	9,125,000.00		740,000.00	8,385,000.00	1,187,119.00	257,844.00
General Obligation Bonds/Notes – CIB	07/2011	39,810,000.00		5,935,000.00	33,875,000.00	7,781,450.00	1,848,200.00
General Obligation Bonds/Notes – CIB	07/2011	8,830,000.00		1,570,000.00	7,260,000.00	2,134,087.00	564,362.00
General Obligation Bonds/Notes – CIB	08/2008	94,825,000.00		94,825,000.00			5,472,062.96
General Obligation Bonds/Notes – CIB	07/2003	185,000.00		185,000.00			7,215.00
General Obligation Bonds/Notes – CAB	07/2003	27,642,014.00			27,642,014.00		
Compensated Absences		2,548,930.67	14,005.59		2,562,936.26		
Other Post-Employment Benefits (OPEB)		128,163,818.00	41,102,126.00		169,265,944.00		
Net Pension Liability		313,683,000.00	13,754,000.00		327,437,000.00		
Totals for Debt Entered:		\$740,202,762.67	\$145,960,131.59	\$106,820,000.00	\$779,342,894.26	\$24,063,485.00	\$15,413,658.96

LEA : 114067002 Reading SD

Printed 1/29/2020 11:57:49 AM

REVISED SUBMISSION

Accreted Interest Detail
Governmental Funds/ Activities

Debt Category	Debt Issue Date (MM/YYYY)	Beginning Accreted Interest	Additions	Reductions	Ending Accreted Interest	Ending bond Principal	Ending Principal Plus Accreted Interest
General Obligation Bonds/Notes – CAB	07/2003	27,840,731.00	2,839,177.00		30,679,908.00	27,642,014.00	58,321,922.00
Totals for Debt Entered:		\$27,840,731.00	\$2,839,177.00		\$30,679,908.00	\$27,642,014.00	\$58,321,922.00

LEA : 114067002 Reading SD

Printed 1/29/2020 11:57:52 AM

REVISED SUBMISSION

General Fund (10)

Section 1: Tuition/Purchased Services as Reported within Expenditure Detail	Amount
Tuition Reported in General Fund Expenditures 1000-560	27,459,556.36
Purchased Services in General Fund Expenditures 1000-594 and 1000-597	718.74
Section 1 Total	\$27,460,275.10

Section 2: Tuition Paid to Institution Types During Fiscal Year	Tuition Paid For Nonspecial Education	Tuition Paid For Special Education	Total
1 1306 Institutions			
2 Institutionalized Children's Programs	471,498.79	1,377,320.89	1,848,819.68
3 Juveniles Incarcerated in Adult Facilities			
4 Residential Treatment Facilities			
5 Other Local Education Agencies			
6 Brick and Mortar Charter Schools	3,299,842.39	1,449,785.91	4,749,628.30
7 Cyber Charter Schools	3,434,529.83	2,468,554.40	5,903,084.23
8 Career and Technology Centers	5,101,858.95		5,101,858.95
9 Approved Private Schools	30,336.00	8,211,184.12	8,241,520.12
10 PA Chartered Schools for the Deaf and Blind			
11 Private Residential Rehabilitative Institutions		1,615,363.82	1,615,363.82
12 Juvenile Detention Centers			
13 Special Program Jointures			
14 Other Tuition Not Included Elsewhere In This Section			
Section 2 Total	\$12,338,065.96	\$15,122,209.14	\$27,460,275.10

LEA : 114067002 Reading SD

Printed 1/29/2020 11:57:55 AM

REVISED SUBMISSION

Food Service / Cafeteria Operations Fund (51)

3000 Operation of Non-Instructional Services		Total
100 <u>Personnel Services – Salaries</u>		
100 Personnel Services – Salaries		3,834,850.00
Total Personnel Services – Salaries		\$3,834,850.00
200 <u>Personnel Services – Employee Benefits</u>		
210 Group Insurance – Contracted Provider		1,412,600.00
220 Social Security Contributions		206,445.00
230 PSERS Retirement Contributions		1,009,107.00
250 Unemployment Compensation		5,697.00
260 Workers' Compensation		30,431.00
299 All Other Employee Benefits		230,946.00
Total Personnel Services – Employee Benefits		\$2,895,226.00
400 <u>Purchased Property Services</u>		
430 Repairs and Maintenance Services		69,193.00
Total Purchased Property Services		\$69,193.00
500 <u>Other Purchased Services</u>		
530 Communications		38.00
540 Advertising		2,237.00
550 Printing and Binding		797.00
580 Travel		3,265.00
591 Services Purchased Locally		109,632.00
Total Other Purchased Services		\$115,969.00
600 <u>Supplies</u>		
610 General Supplies		457,401.00
620 Energy		145,230.00
630 Food		6,580,606.00
Total Supplies		\$7,183,237.00
700 <u>Property</u>		
740 Depreciation		140,880.00
Total Property		\$140,880.00
800 <u>Other Objects</u>		
810 Dues and Fees		732.00
Total Other Objects		\$732.00
Total 3000 Operation of Non-Instructional Services		\$14,240,087.00

LEA : 114067002 Reading SD

Printed 1/29/2020 11:57:55 AM

REVISED SUBMISSION

Food Service / Cafeteria Operations Fund (51)

3100 Food Services	Elementary	Secondary	Federal	Total
100 <u>Personnel Services – Salaries</u>				
100 Personnel Services – Salaries			3,834,850.00	3,834,850.00
Total Personnel Services – Salaries			\$3,834,850.00	\$3,834,850.00
200 <u>Personnel Services – Employee Benefits</u>				
210 Group Insurance – Contracted Provider			1,412,600.00	1,412,600.00
220 Social Security Contributions			206,445.00	206,445.00
230 PSERS Retirement Contributions			1,009,107.00	1,009,107.00
250 Unemployment Compensation			5,697.00	5,697.00
260 Workers' Compensation			30,431.00	30,431.00
299 All Other Employee Benefits			230,946.00	230,946.00
Total Personnel Services – Employee Benefits			\$2,895,226.00	\$2,895,226.00
400 <u>Purchased Property Services</u>				
430 Repairs and Maintenance Services			69,193.00	69,193.00
Total Purchased Property Services			\$69,193.00	\$69,193.00
500 <u>Other Purchased Services</u>				
530 Communications			38.00	38.00
540 Advertising			2,237.00	2,237.00
550 Printing and Binding			797.00	797.00
580 Travel			3,265.00	3,265.00
591 Services Purchased Locally			109,632.00	109,632.00
Total Other Purchased Services			\$115,969.00	\$115,969.00
600 <u>Supplies</u>				
610 General Supplies			457,401.00	457,401.00
620 Energy			145,230.00	145,230.00
630 Food			6,580,606.00	6,580,606.00
Total Supplies			\$7,183,237.00	\$7,183,237.00
700 <u>Property</u>				
740 Depreciation			140,880.00	140,880.00
Total Property			\$140,880.00	\$140,880.00
800 <u>Other Objects</u>				
810 Dues and Fees			732.00	732.00
Total Other Objects			\$732.00	\$732.00
Total 3100 Food Services			\$14,240,087.00	\$14,240,087.00

	<u>Food Service(51)</u>	<u>Child Care Operations(52)</u>	<u>Other Enterprise(58)</u>	<u>Internal Service(60)</u>	<u>Total</u>
3000 <u>Operation of Non-Instructional Services</u>					
3100 Food Services	14,240,087.00				14,240,087.00
Total Operation of Non-Instructional Services	\$14,240,087.00				\$14,240,087.00
TOTAL ACTUAL EXPENDITURES & OTHER FINANCING USES	\$14,240,087.00				\$14,240,087.00